

# 4<sup>th</sup> Meeting of the MRA Network 16<sup>th</sup> June 2010, Parma





# **STRATEGY FOR FOOD RISK ASSESMENT OF THE REPUBLIC OF MACEDONIA**

**Prof. Vaso Taleski, MD. PhD, Microbiologist  
Head of Centre for Preventive Medicine  
Skopje, Macedonia**

**D-r Marina Domazetovska-Popovska  
Food Directorate  
Skopje, Macedonia**



# Prof. Vaso Taleski, MD. PhD, Microbiologist Head of Centre for Preventive Medicine Skopje, Macedonia

## The FEMS Executive Committee

- |                                |                        |    |
|--------------------------------|------------------------|----|
| ■ <u>President:</u>            | Milton da Costa        | PT |
| ■ <u>Vice President:</u>       | Bernhard Schink        | DE |
| ■ <u>Vice President-elect:</u> | Jean Claude Piffaretti | CH |
| ■ <u>Secretary-General:</u>    | Tone Tønjum            | NO |
| ■ <u>Treasurer:</u>            | Maurice Lock           | UK |
| ■ <u>Publications Manager:</u> | Fergus Priest          | UK |
| ■ <u>Grants Secretary:</u>     | Vaso Taleski           | MK |
| ■ <u>Member-at-Large:</u>      | Roland Koerner         | UK |
| ■ <u>Congress Coordinator:</u> | Hans Wolf              | DE |



Grants Secretary  
Dr Vaso Taleski

***FEMS- Federation of European Microbiological Societies***  
***46 member societies from 36 European countries,***  
***over 30.000 microbiologists***

## FEMS is...

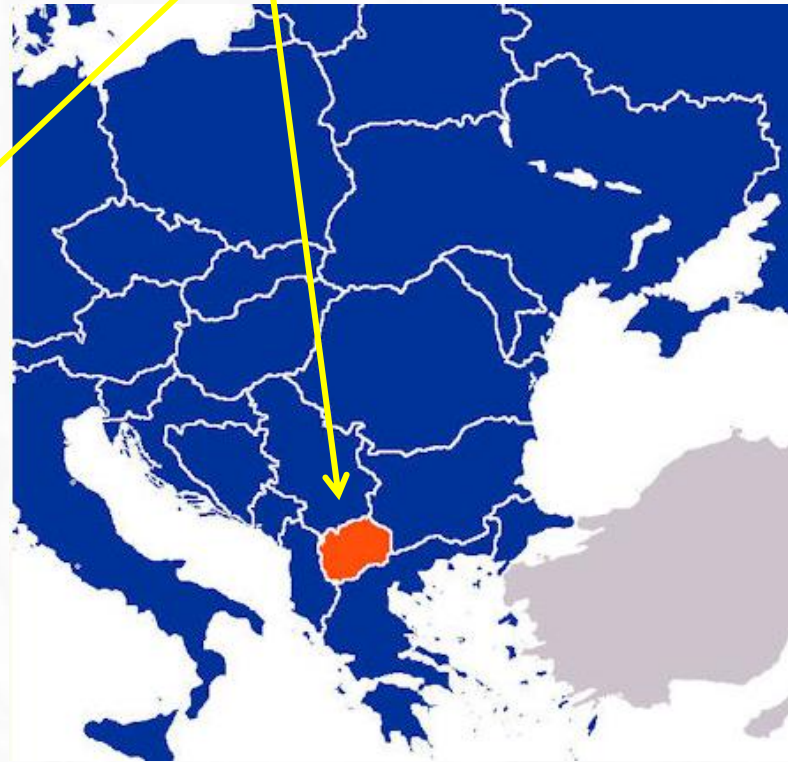
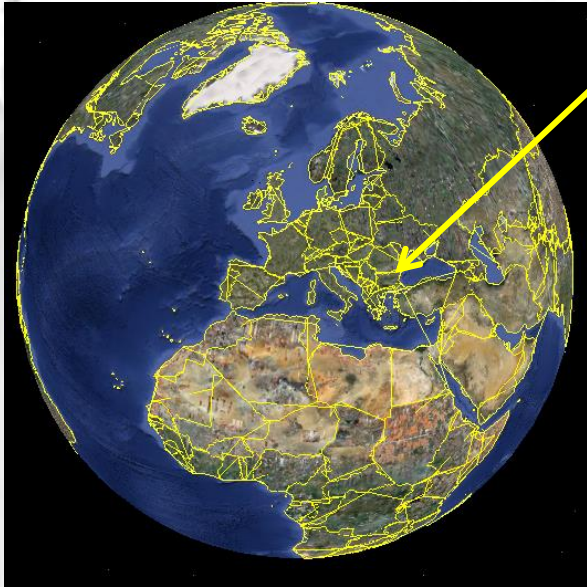
- the voice of microbiology in Europe
- a network of European microbiologists with worldwide connections
- Europe's connection to microbiology



## **Mission:**

**To advance and unify microbiology knowledge**

# REPUBLIC of MACEDONIA



**Total area of 25,333 km<sup>2</sup> (9,781 sq mi)**  
**2002 census TOTAL = 2,022,547 inhabitants**

**Member of the UN and the Council of Europe**  
**Candidate for EU and NATO membership**

Central legal Act in food legislation in  
R. Macedonia is:

**The Law on safety of food and products and  
materials in contact with food**

(O.G. of R.M. No. 54/02 and 84/07)

# GOVERNMENT of REPUBLIC of MACEDONIA

CMC

MINISTRY OF AGRICULTURE,  
FORESTRY AND  
WATER ECONOMY

MINISTRY OF  
HEALTH

Veterinary  
Directorate

Phytosanitary  
Directorate

State Agriculture  
Inspection

Food  
Directorate

Faculty of  
Veterinary  
Medicine

Faculty of  
Agricultural  
Sciences and Food

National  
Institute for  
Public Health

Regional  
Centers for  
Public Health (10)

# Authorities for control of food safety:

- *Ministry of Health*

- **Food Directorate** (~100 employees,  
60 inspectors)

- *Ministry of Agriculture, Forestry and Water economy*

- **Veterinary Directorate**
  - **Agricultural Inspection**
  - **Phytosanitary Directorate**



# MINISTRY OF HEALTH, FOOD DIRECTORATE

**DIRECTOR**

Unit of Financial  
affairs

Unit of Human  
Resources

Unit of Internal Audit

## Department of legal affairs and policy

Unit for normative and  
legal affairs

Unit of Administrative  
and Financial Affairs  
and Information  
analytical system

Unit for consumer  
protection

Unit for quality  
management

## Department for official control

Regional unit Skopje

Regional unit Tetovo

Regional unit Bitola

Regional unit Strumica

Regional unit Shtip

Regional unit Kumanovo

Unit for official controls on  
import/export

## Department for registration

Unit for registration and  
object categorization

Unit for food for special  
nutritional use, food  
supplements, GMO food  
and novel food

Unit for monitoring  
program for food safety

## Department of scientific affairs and cooperation

**Unit for risk assessment**

Unit for risk  
communication

Unit for cooperation

# Risk Assment Unit

- Creating database, analytical processing of data
- Analysis of data provided from other authorities
- Prepares information about potential risks
- Prepares guidelines intended for food bussiness operators
- Prepares Risk categorization models
- Carries out the first two steps of the risk analysis :
  - hazard **identification** ;
  - hazard **characterization** ;

# Sources of scientific information

- scientific studies
- national food safety database
- national food monitoring data
- national human health surveillances and laboratory diagnostic data
- disease outbreak investigations
- national food consumptions surveys
- risk assessment carried out by other governments
- international food safety databases
- international risk assessment (JECFA, JEMRA, JMPR)

# Published Scientific studies and opinions

- Scientific opinions of the EFSA's panels published in " The EFSA Journal " :

Scientific opinion of the Panel of Contaminants regarding Nitrates in Vegetables;

Opinion of the scientific Panel on Food Additives, Flavourings, Processing Aids and Materials in contact with Food (AFC) regarding carcinogenicity study on aspartame ;

Scientific Opinion of the Panel on Food Additives and Nutrient regarding the use of taurine and D-glucurono- $\gamma$ -lactone as constituents of the so-called "energy" drinks

# National Food Safety Database

- Data from regular official control by food **inspectors**;
- Data from self control by food **operators**;
- According to annual plan preparing the **reports** (every three months and annual);
- **Annual plan** through the Ministry of health is submitted to the Government of RM
- comparative analysis (2005/2006/2007..)
- **published** reports on [www.moh.gov.mk](http://www.moh.gov.mk)

# Risk Assessment Methodology

Basic components of the risk assessment:

**1. Hazard identification**-identification of biological, chemical and physical agents capable of causing adverse health effects and which may be present in a particular food or group of foods.

**2. Hazard characterization**- the qualitative and/or quantitative evaluation of the nature of the adverse effects associated with specific hazard , which may be present in the food .

# Risk Assessment Methodology

Steps that Risk Assessment Unit **doesn't** carry out:

**3.Exposure assessment**-characterizes the amount of hazard consumed by various members of the exposed population.

**4.Risk characterization**- the qualitative and/or quantitative estimation, including attendant uncertainties, of the probability of occurrence and severity of known or potential adverse health effects in a given population based on previous three steps.

# National Food Monitoring Data

microbiological parameters,

pesticide residues, heavy metals, mycotoxins.....

Outbreak investigations,

International Food Safety Database.





Korab mountain, the highest mountain in the country.



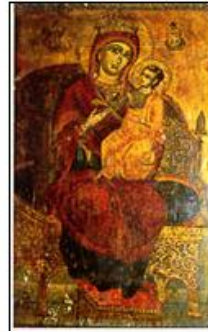
Kokino



**Megalithic observatory  
special stone markers used to track the  
movement of the Sun and Moon on the  
eastern horizon,  
UNESCO's World Heritage Site  
more than 3800 years old,  
from Early Bronze Age**



Манастирот Свети Наум



Monument of saints Cyril  
and Methodius

- >Lake Ohrid It is one of Europe's deepest 288 m (940 ft) and oldest lakes (4-10 million years), area of 358 km<sup>2</sup>,
- >unique aquatic ecosystem with more than 200 endemic species (Ohrid trout)
- >Declared a World Heritage site by UNESCO in 1979

