

**THE IMPLICATIONS OF THE USE
OF ARTIFICIAL INTELLIGENCE
IN CRIMINAL JUSTICE**
OLGA KOSHEVALISKA, PHD
FACULTY OF LAW, GOCE
DELCEV UNIVERSITY, STIP,
NORTH MACEDONIA

ARTIFICIAL INTELLIGENCE IN CRIMINAL JUSTICE SYSTEMS

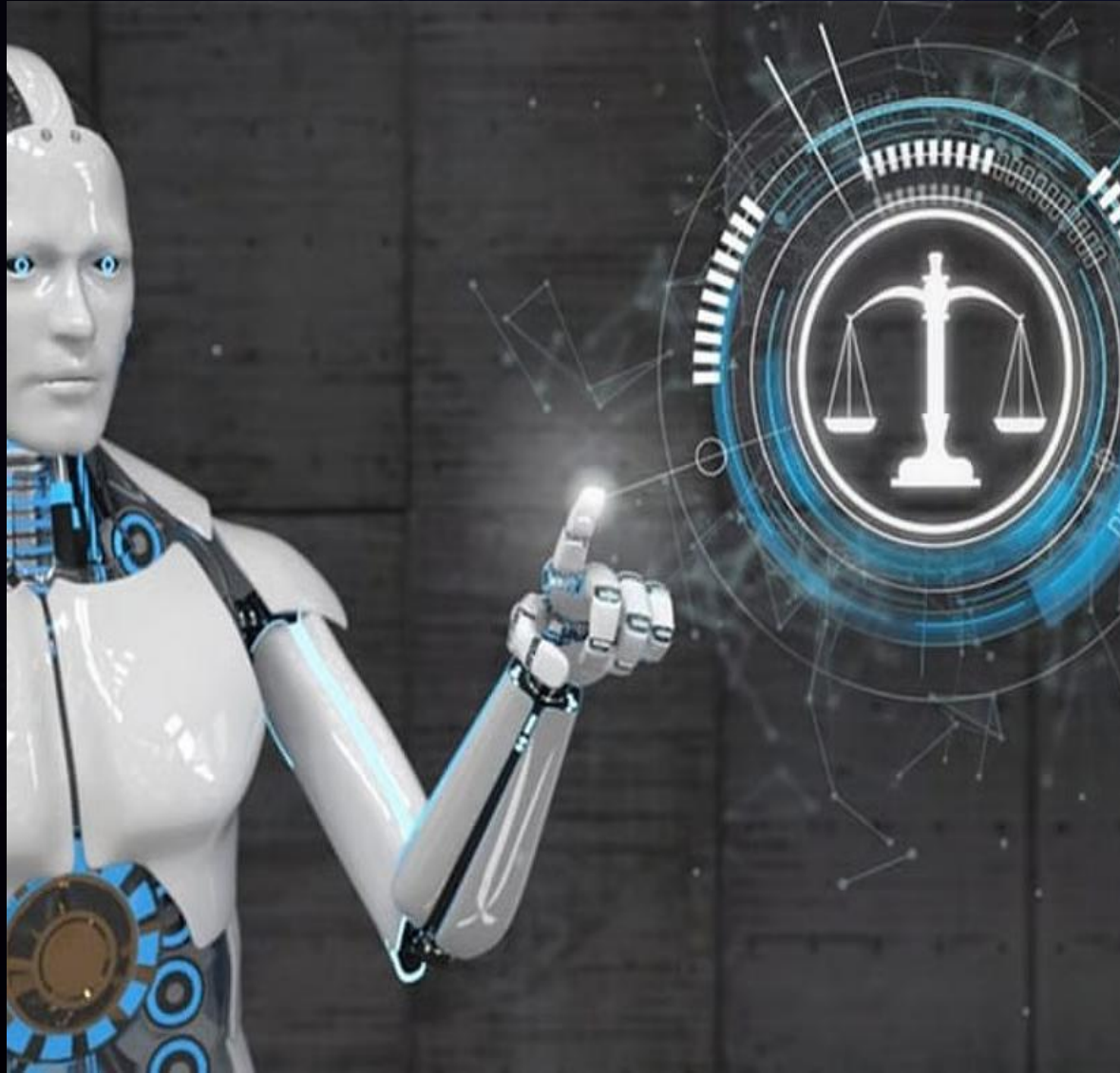
"ALGORITHMIC TURN" IN CRIMINAL JUSTICE



From theoretical exploration -> practical implementation.



PREDICTIVE POLICING AND RISK ASSESSMENT TOOLS



Automation introduces complex ethical and legal dilemmas. Scholars have warned that algorithmic systems may reproduce or even amplify existing social inequalities when trained on historically biased data. "Technocratic illusion," the mistaken belief that technological objectivity can eliminate human bias. The COMPAS risk assessment software was found to incorrectly and disproportionately flag **black** defendants as high-risk.

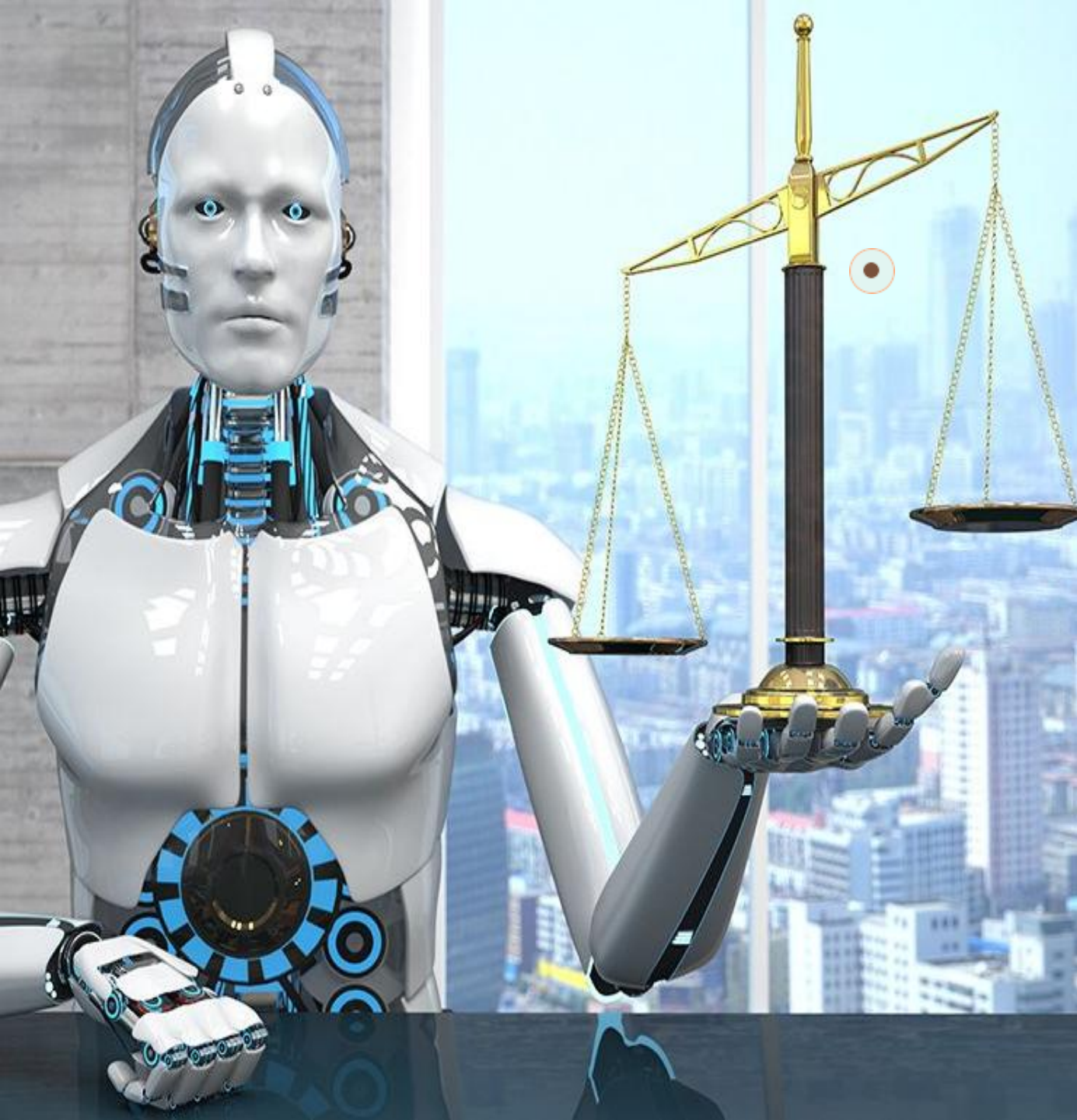
<p>VERNON PRATER</p> <p>Prior Offenses 2 armed robberies, 1 attempted armed robbery</p> <p>Subsequent Offenses 1 grand theft</p> <p>LOW RISK 3</p>	<p>BRISHA BORDEN</p> <p>Prior Offenses 4 juvenile misdemeanors</p> <p>Subsequent Offenses None</p> <p>HIGH RISK 8</p>
--	---



<p>JAMES RIVELLI</p> <p>LOW RISK 3</p>	<p>ROBERT CANNON</p> <p>MEDIUM RISK 6</p>
--	---

<p>DYLAN FUGETT</p> <p>LOW RISK 3</p>	<p>BERNARD PARKER</p> <p>HIGH RISK 10</p>
---	---

<p>JAMES RIVELLI</p> <p>Prior Offenses 1 domestic violence aggravated assault, 1 grand theft, 1 petty theft, 1 drug trafficking</p> <p>Subsequent Offenses 1 grand theft</p> <p>LOW RISK 3</p>	<p>ROBERT CANNON</p> <p>Prior Offense 1 petty theft</p> <p>Subsequent Offenses None</p> <p>MEDIUM RISK 6</p>
--	--



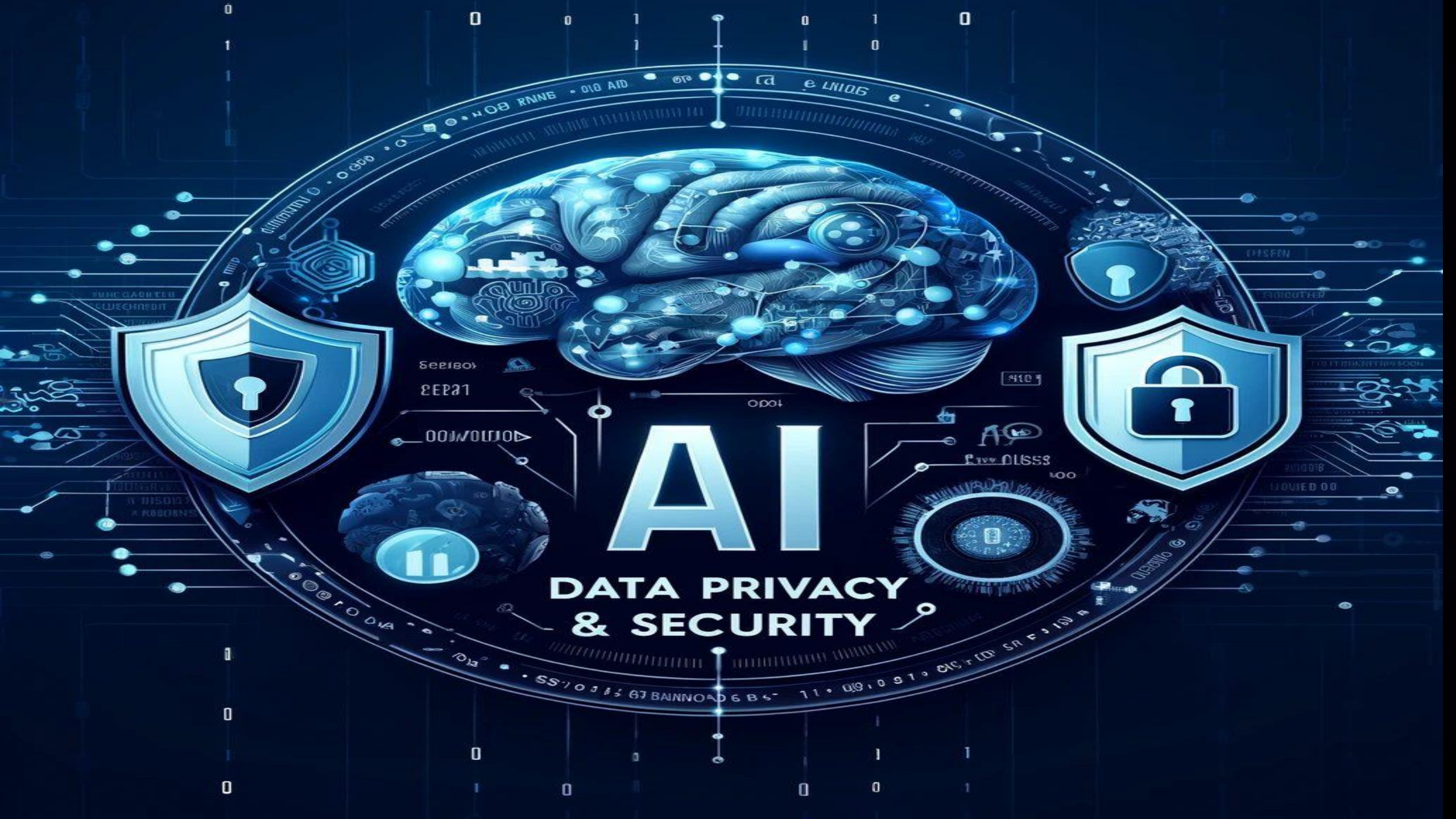
ETHICAL AND LEGAL DILEMMAS



**AI IN THE COURTROOM
CHAIN OF CUSTODY AND DATA
INTEGRITY**



**HUMAN RIGHTS IMPLICATIONS
THE PRESUMPTION OF INNOCENCE AND THE RIGHT TO A FAIR TRIAL**



AI

DATA PRIVACY & SECURITY



**DISCRIMINATION AND AI:
ENSURING FAIRNESS IN DATA**

TECHNOLOGY MUST SERVE JUSTICE, NOT REPLACE IT !

