

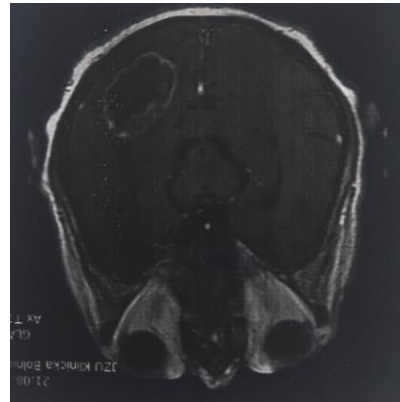
CASE REPORT OF A PATIENT WITH A NEOPLASTIC BRAIN TUMOR

BILJANA EFTIMOVA, Martin Lazarevski, Radmila Zikova, Natali Delipetrova

Department of Anesthesia, reanimation and intensive care, Clinical Hospital, Stip, Republic of North Macedonia

Faculty of Medical Sciences, Goce Delcev University, Stip, Republic of North Macedonia

Neoplastic brain tumors are serious conditions that can cause a variety of neurological deficits and diseases. They arise from abnormalities in the genetic structure of cells, which leads to uncontrolled growth and tumor formation. The diagnosis involves a clinical and examination, like Magnetic Resonance Imaging (MRI) and Computed Tomography (CT). The treatment can vary depending on the type of tumor, location, and the stage of the disease. It usually involves a combination of surgery, radiotherapy, and/or chemotherapy, and in some cases, experimental therapies.



This case report of a patient with a neoplastic brain tumor underscores the intricate challenges and intensive medical care involved in managing such conditions. From initial diagnosis through surgical intervention and post-operative care, the patient's journey highlights the complexity of modern medical treatment. Despite meticulous surgical and post-operative management, including intensive care and tailored therapeutic adjustments, the patient faced complications such as pleural effusion, necessitating escalated antibiotic therapy. Continuous monitoring and diagnostic tools played crucial roles in guiding treatment decisions and monitoring the patient's progress. Ultimately, despite exhaustive medical efforts, the patient's condition deteriorated, leading to a fatal outcome on the 17th day. This outcome serves as a poignant reminder of the uncertainties inherent in treating severe neoplastic diseases and underscores the ongoing need for enhanced therapeutic strategies and supportive care.

In summary, this case emphasizes the importance of a comprehensive and dynamic approach to managing complex medical cases. It highlights the dedication of the medical team and the challenges involved for the whole process.