

# The Importance of Developing Communicative competence in Second Language Acquisition SLA

*Simona Serafimovska, PhD  
Ana Koceva, PhD  
Goce Delcev University, Stip, North  
Macedonia*

## # The Cornerstone of SLA: Communicative Competence

Communicative competence is key for language mastery. It effectively bridges theory and practical language use. This presentation explores its meaning and importance in second language acquisition (SLA). We will examine each aspect, concluding with future goals.



## # Defining Communicative Competence

Communicative competence, introduced by Dell Hymes, is crucial.

It includes both the knowledge and ability. It is for effective communication.

The four major aspects are grammatical, sociolinguistic, discourse, and strategic.

# Communicative Competence





## # Grammatical Competence: The Foundation

Grammatical competence means correct use of morphology, syntax, phonology, and semantics.

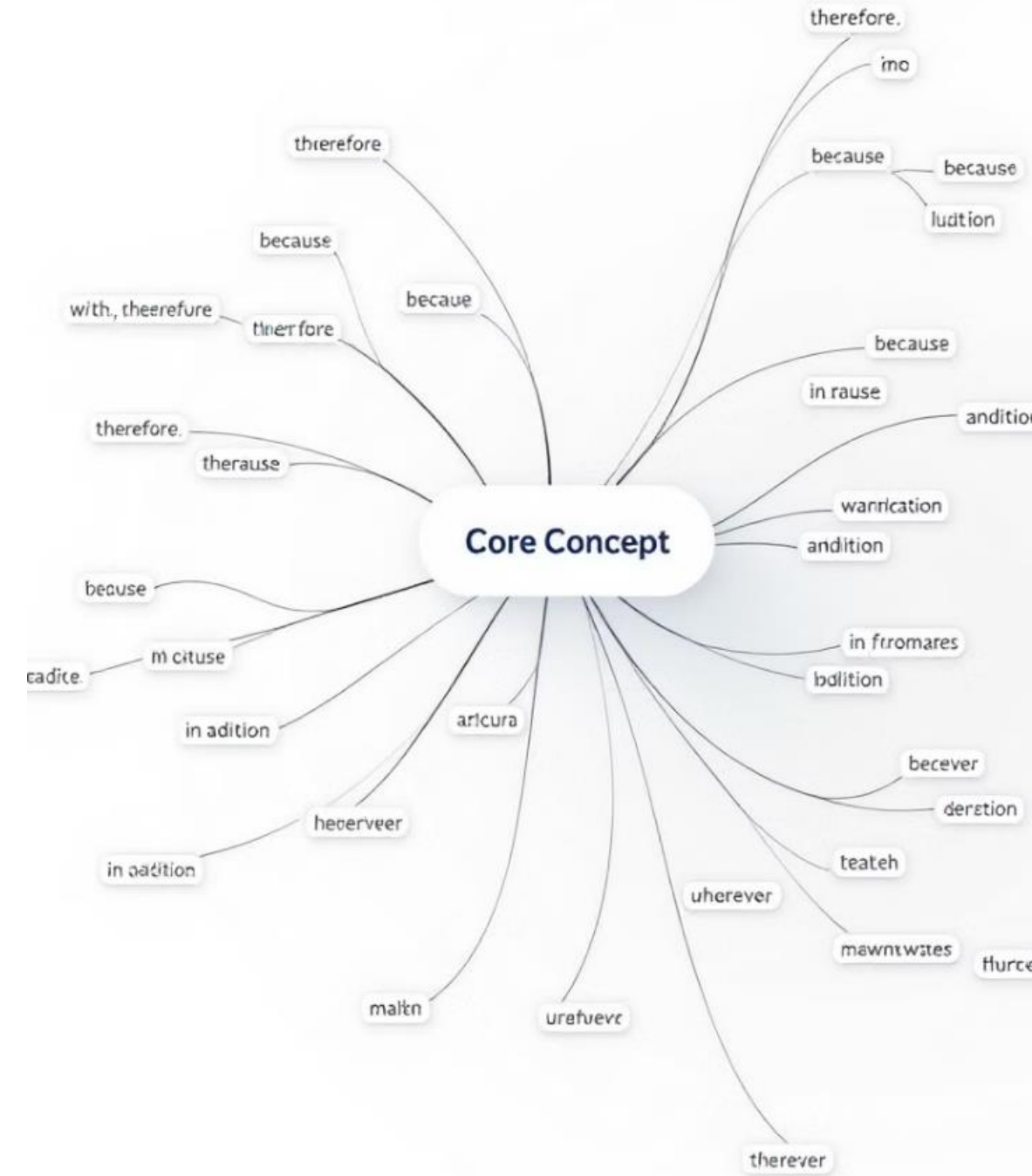
It involves understanding rules for forming sentences.

For example, using correct verb conjugation in the past tense.



## # Discourse Competence: Cohesion and Coherence

Discourse competence is the ability to create coherent texts. This involves logical organization of ideas. It also uses cohesive devices. Use transition words such as "however" and "therefore".



# # Sociolinguistic Competence: Context Matters

Sociolinguistic competence focuses on appropriate language use in diverse settings.

This includes sensitivity to register, style, and cultural context.

For instance, using formal language with professors.

Use informal language with friends.

## # Strategic Competence: Problem- Solving Skills

Strategic competence is using communication repair strategies. These help when communication fails. Examples: circumlocution and approximation. Use of avoidance strategies can also help. Asking for clarification or using gestures are helpful.

## # Why Communicative Competence Matters in SLA

Communicative competence is essential in SLA.  
**It enables meaningful interaction.**  
It fosters learner autonomy and motivation.  
It also prepares learners for real-world communication.





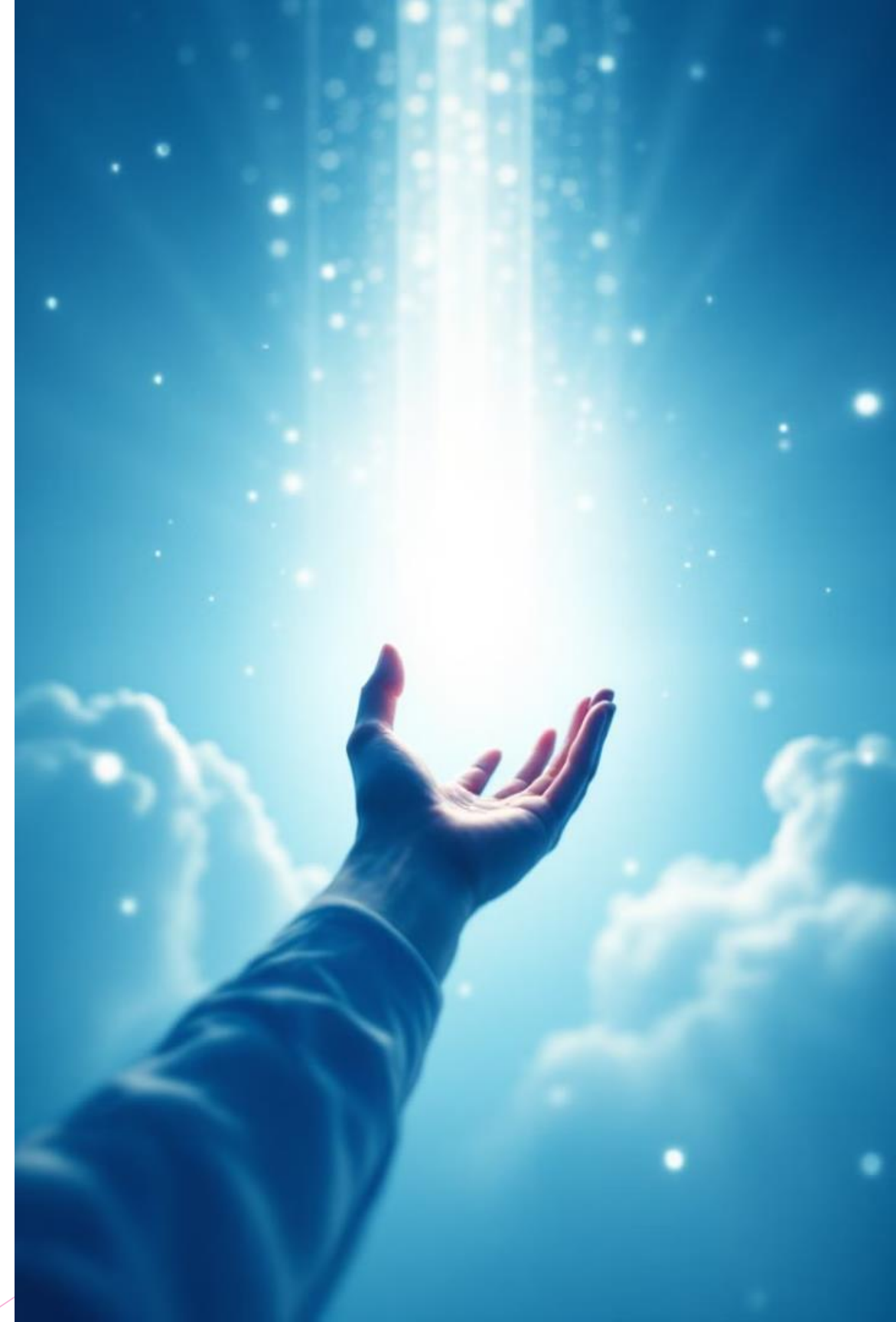
## # Conclusion: Towards Communicative Language Teaching

Communicative Language Teaching focuses on developing all aspects. It focuses on aspects of communicative competence. It helps create authentic opportunities. This empowers learners to use language confidently.



# Future Goals

Ongoing research continues to improve our comprehension of SLA.  
New methods are constantly being developed.  
Future goals aim to better integrate and refine strategies.  
This is to enhance communicative competence.



# Thank you for your attention!

[Simona.Serafimovska@ugd.edu.mk](mailto:Simona.Serafimovska@ugd.edu.mk)  
[Ana.Koceva@ugd.edu.mk](mailto:Ana.Koceva@ugd.edu.mk)