



# BIOMECHANICS IN DEEP BITE MALOCCLUSION TREATMENT



**Assistant Prof. Vesna Trpevska**

PHO University Dental Clinical Center „St. Panteleimon“, Department of  
Orthodontics, Skopje, Republic of North Macedonia,  
Faculty of Medical Sciences, Goce Delcev University, Stip, Republic of North  
Macedonia



Definition

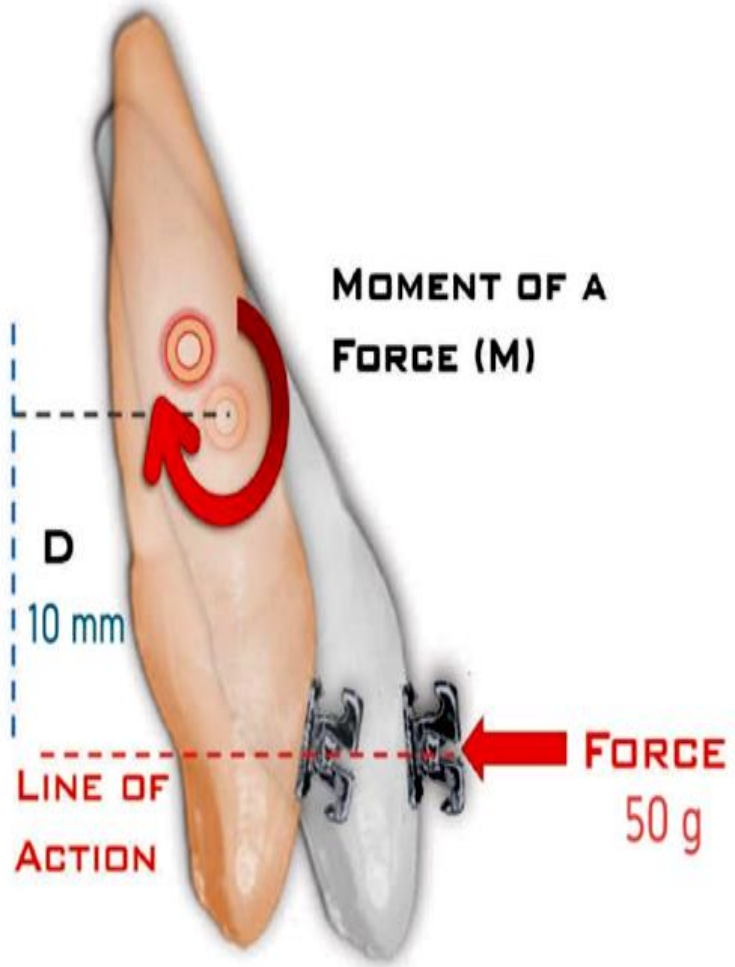
Periodontal status

Traumatic occlusion

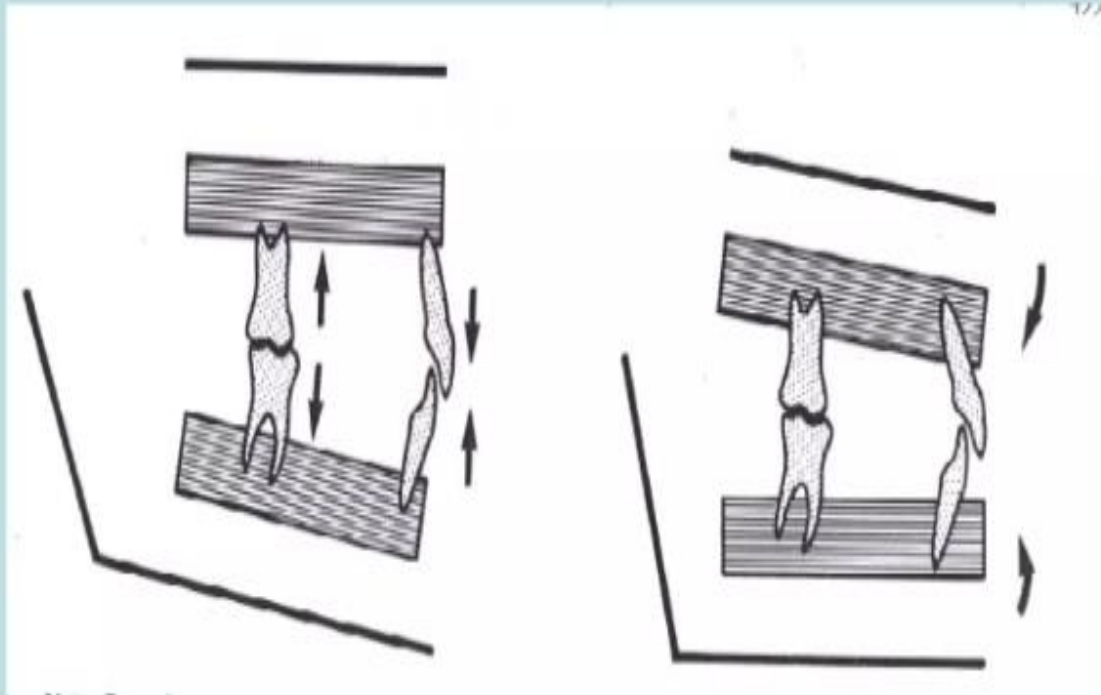
Functional problems

Brucsisam

TMD



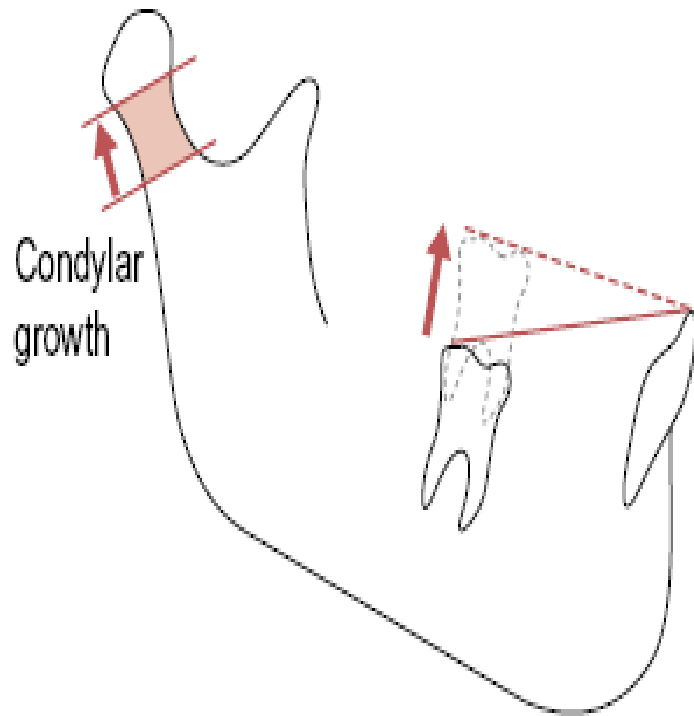
$$M = F \times D$$



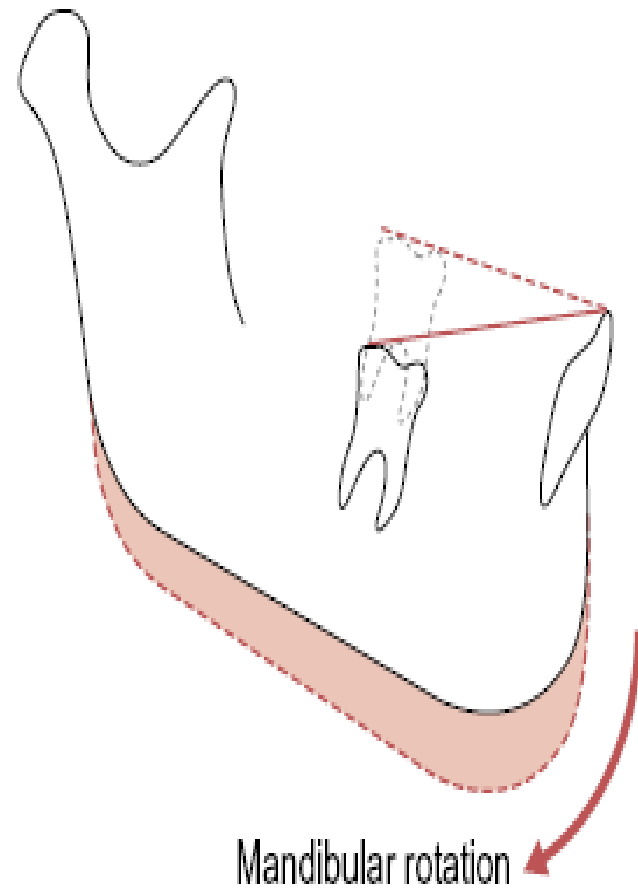
Dentoalveolar deepover bite

Skeletal deep over bite

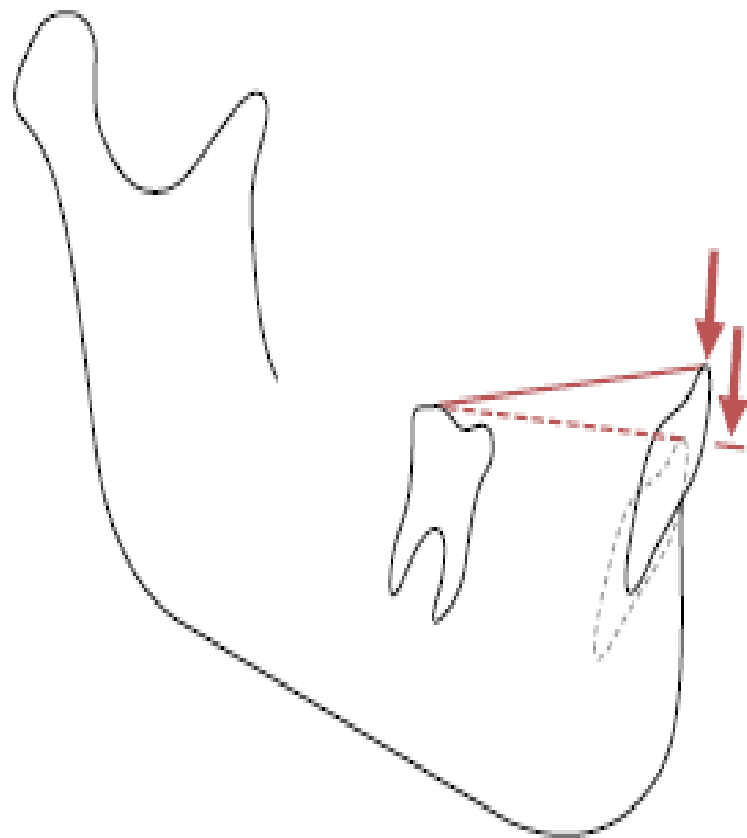
(1) Relative incisor intrusion



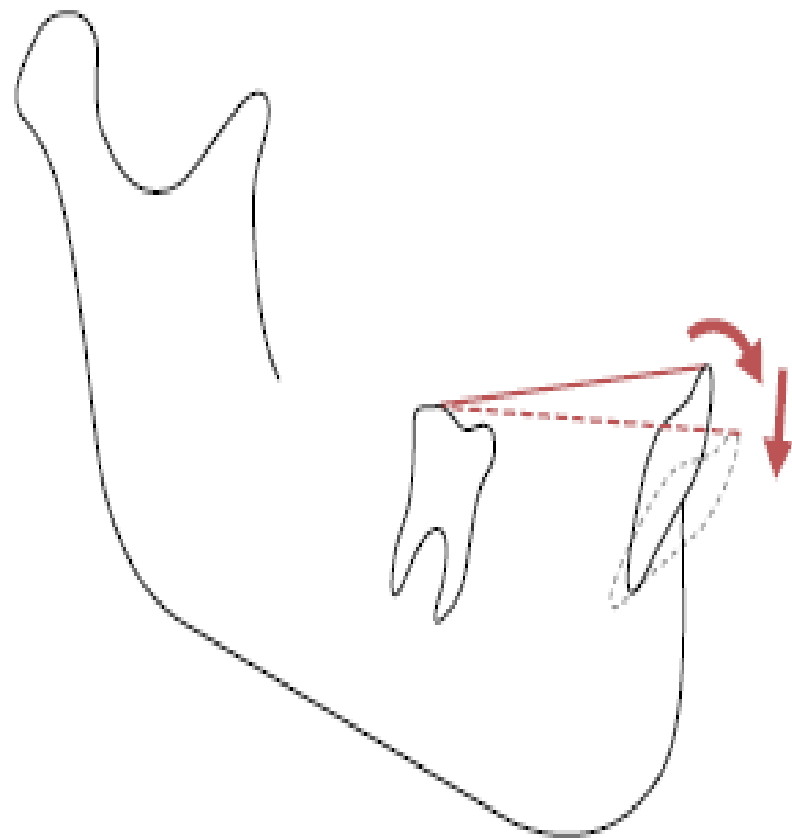
(2) Buccal segment extrusion



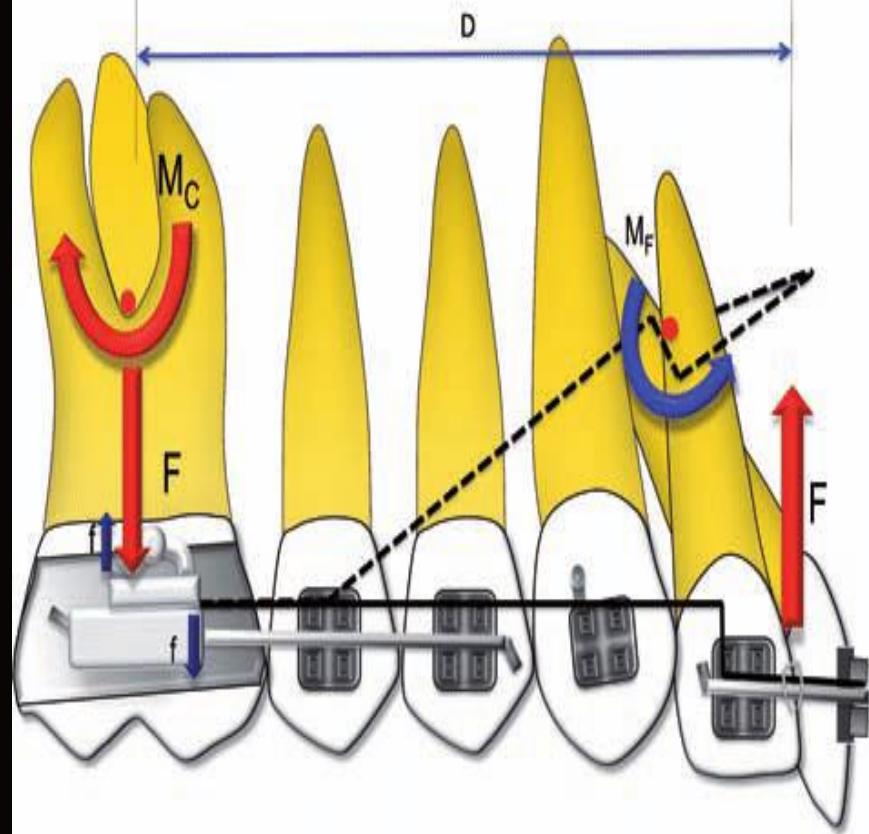
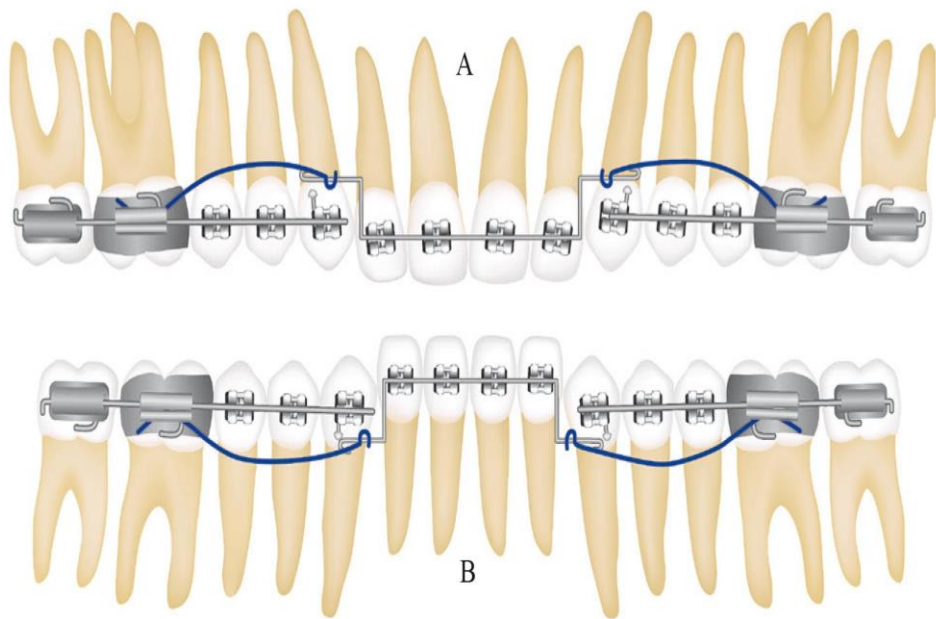
(3) Incisor intrusion



(4) Incisor proclination

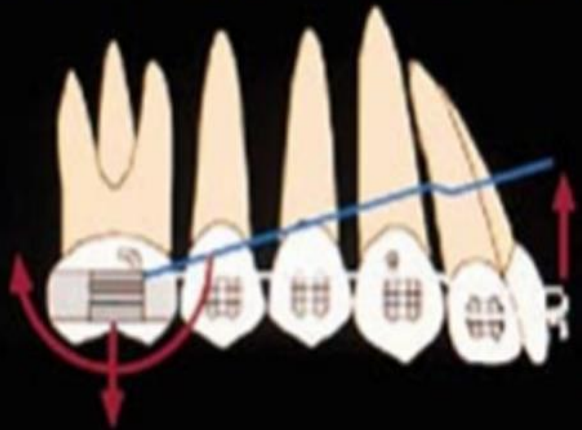






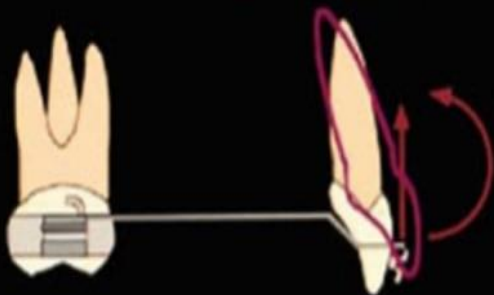


## Intrusion Force System



A

## Flaring Incisors





THANK YOU FOR TOUR  
KIND ATTENTION