

18th National Congress of Serbian Pathologists and
Cytologists Association with international participation

**PD-L1 *expression* in
metastatic colorectal
cancer**

Prim. d-r Blagica Krsteska

Institute of pathology, Faculty of medicine, UKIM, Skopje
PhD at Faculty of Medical Sciences, Goce Delcev University, Stip

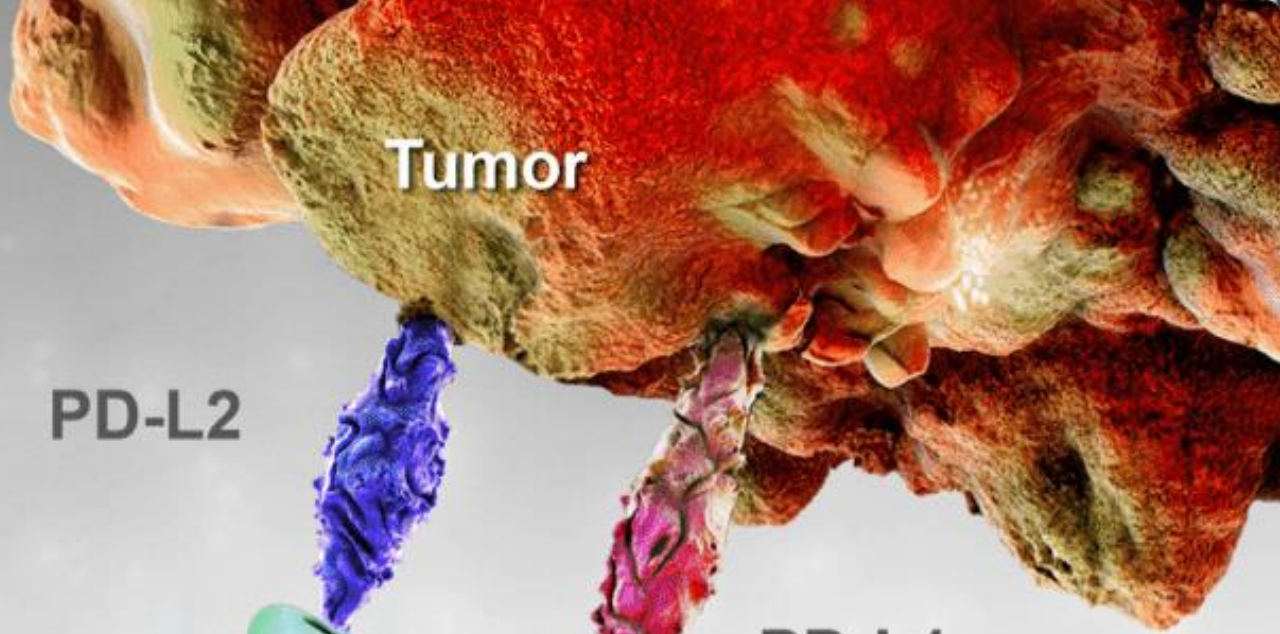
9-11 May, Novi Sad, Serbia



1



2



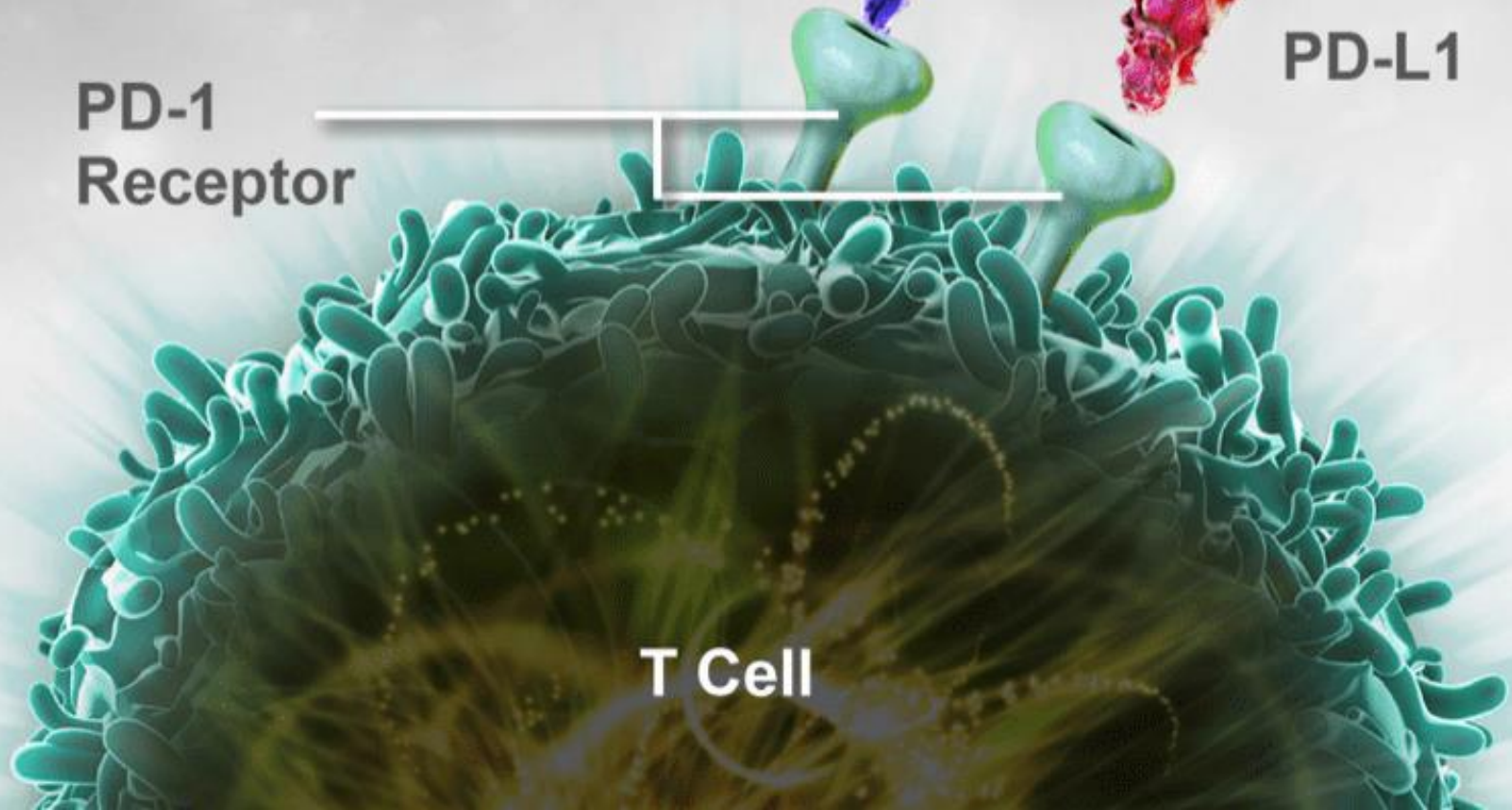
Tumor

PD-L2

PD-L1

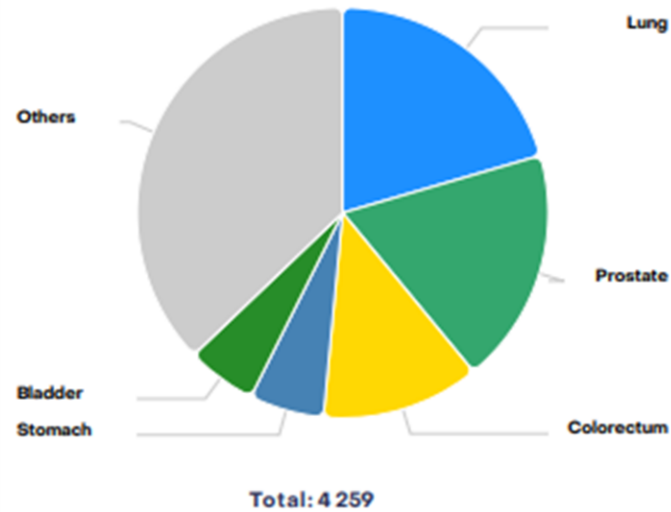
PD-1
Receptor

T Cell



Top 5 most frequent cancers**

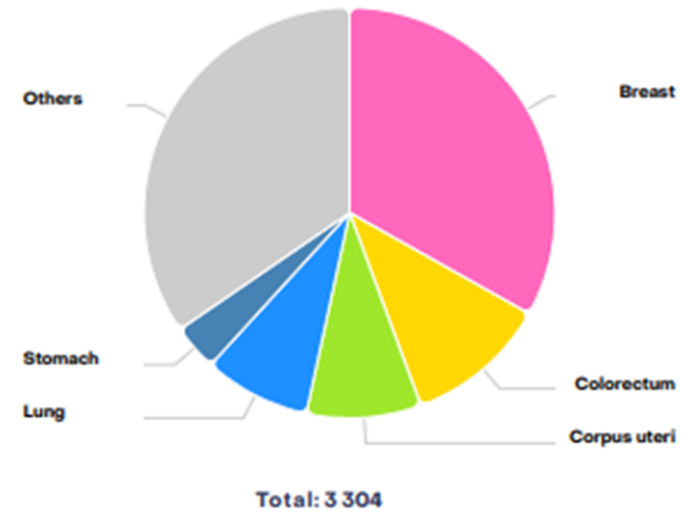
Males



| Rank | Cancer site | Number of cases | Percent |
|------|-------------|-----------------|---------|
| 1st | Lung | 873 | 20.5% |
| 2nd | Prostate | 790 | 18.5% |
| 3rd | Colorectum | 530 | 12.4% |
| 4th | Stomach | 250 | 5.9% |
| 5th | Bladder | 234 | 5.5% |
| - | Others | 1 582 | 37.1% |

Number of new cases in 2022, males, all ages

Females



| Rank | Cancer site | Number of cases | Percent |
|------|--------------|-----------------|---------|
| 1st | Breast | 1 096 | 33.2% |
| 2nd | Colorectum | 370 | 11.2% |
| 3rd | Corpus uteri | 298 | 9.0% |
| 4th | Lung | 277 | 8.4% |
| 5th | Stomach | 120 | 3.6% |
| - | Others | 1 143 | 34.6% |

Number of new cases in 2022, females, all ages

Objective

Objective: Evaluate PD-L1 expression in mCRC

Aim: Correlate PD-L1 expression with clinicopathologic characteristics

Introduction

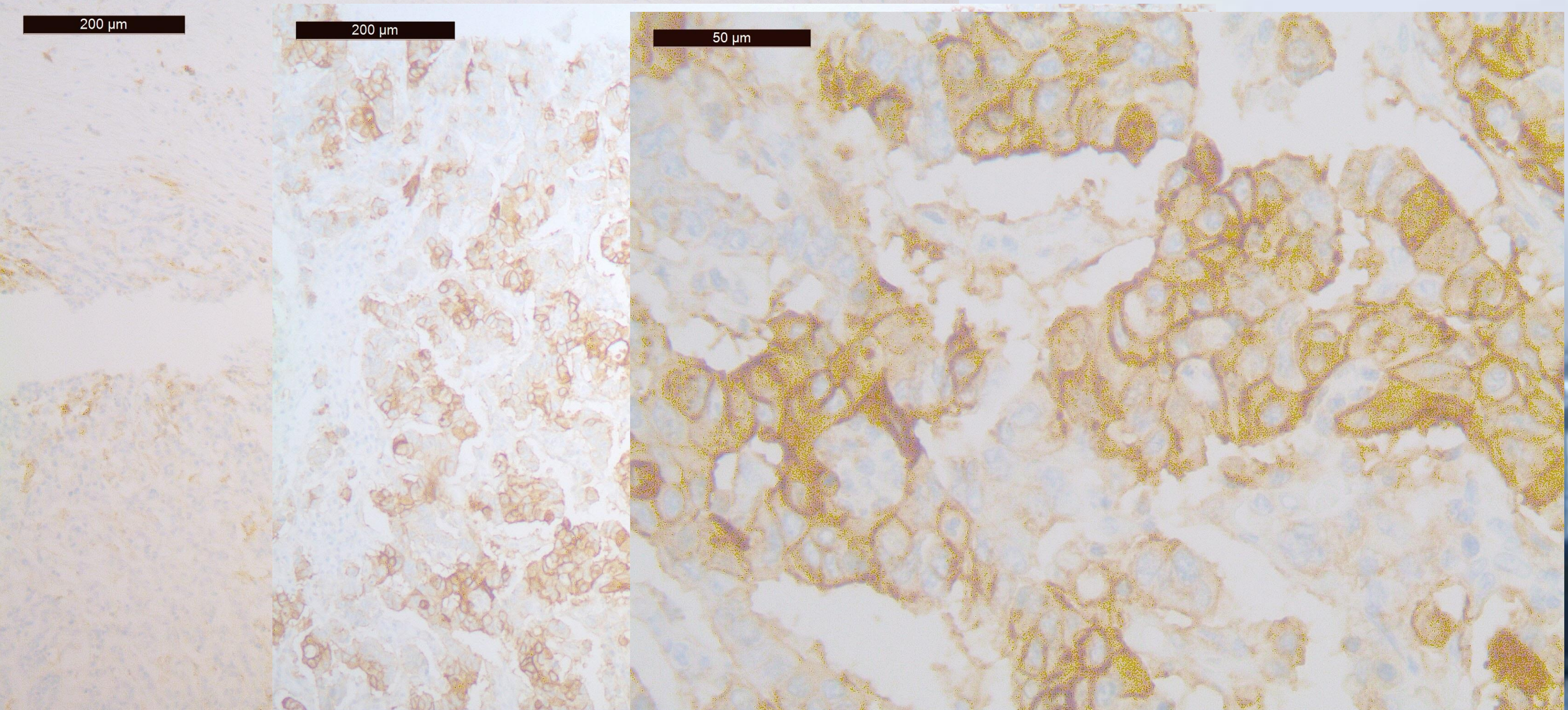
- Importance of treatment advancements in mCRC
- Role of molecular classification and personalized therapy
- Significance of PD-L1 as an inhibitor of cytotoxic immune response

Materials and methods

- Study conducted at Clinical Hospital Acibadem-Sistina
- 75cases of diagnosed mCRC
- PD-L1 assessed using clone 263 in tissue microarray
- Evaluation by different cut offs (>1%, >10%, >50% of tumor cells)

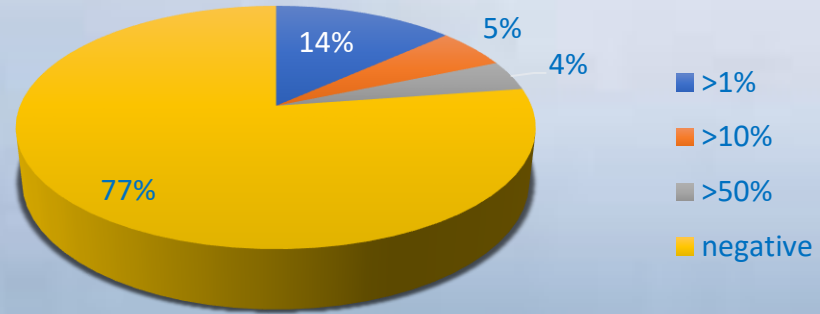


Results: PD-L1 expression

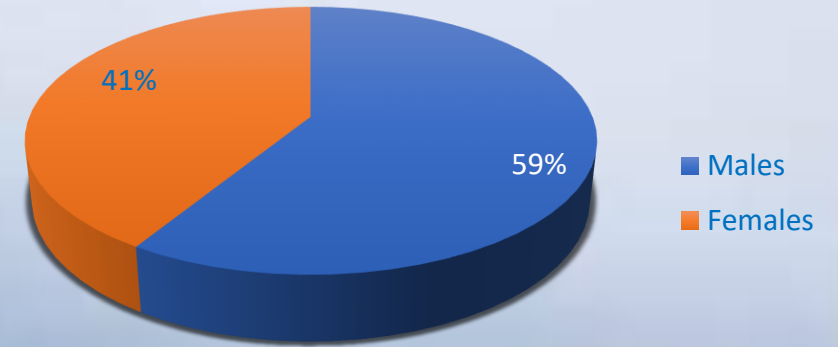


Results

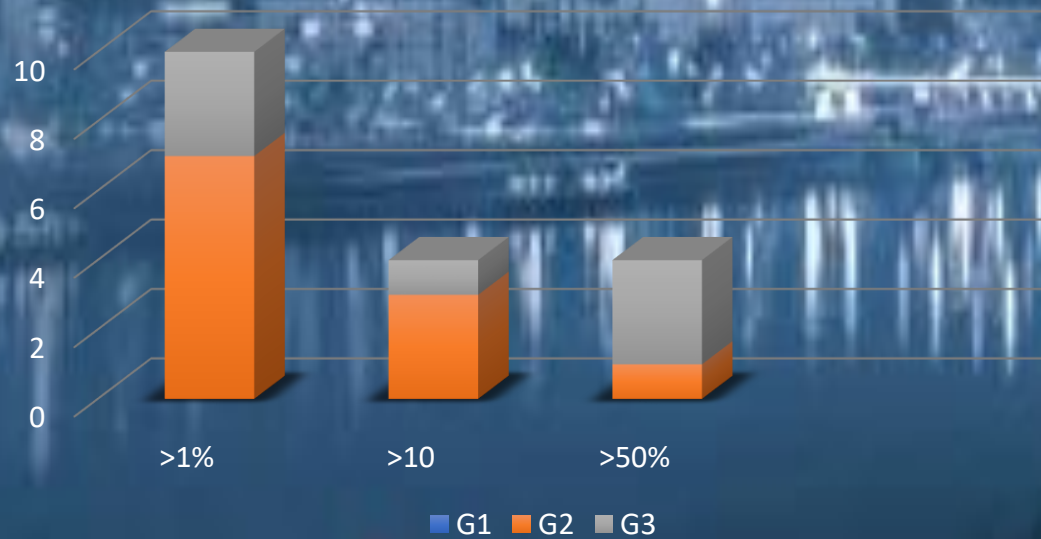
PD-L1



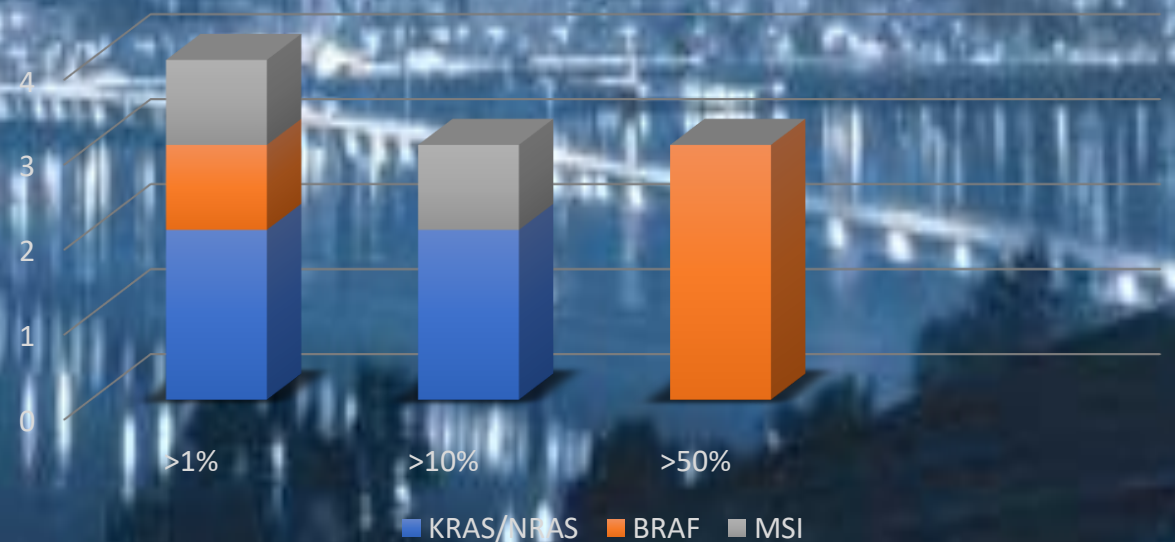
Gender



PD-L1 with grade



PD-L1 with mutations



Results: clinicopathological correlations

Higher PD-L1 expression correlated with

- ✓ Higher grade
- ✓ Advanced pathological stage
- ✓ Right sided
- ✓ BRAF mutations

Conclusions

- PD-L1 expression in nearly one third of mCRC
- Higher expression associated with poor prognostic factors
- Potential survival advantage with immune checkpoint inhibitor therapy

NIH U.S. National Library of Medicine

ClinicalTrials.gov

[Find Studies](#) ▼

[About Studies](#) ▼

[Submit Studies](#) ▼

[Resources](#) ▼

[About Site](#) ▼

[PRS Login](#)

[Home](#) > [Search Results](#)

[Modify Search](#)

[Start Over](#)

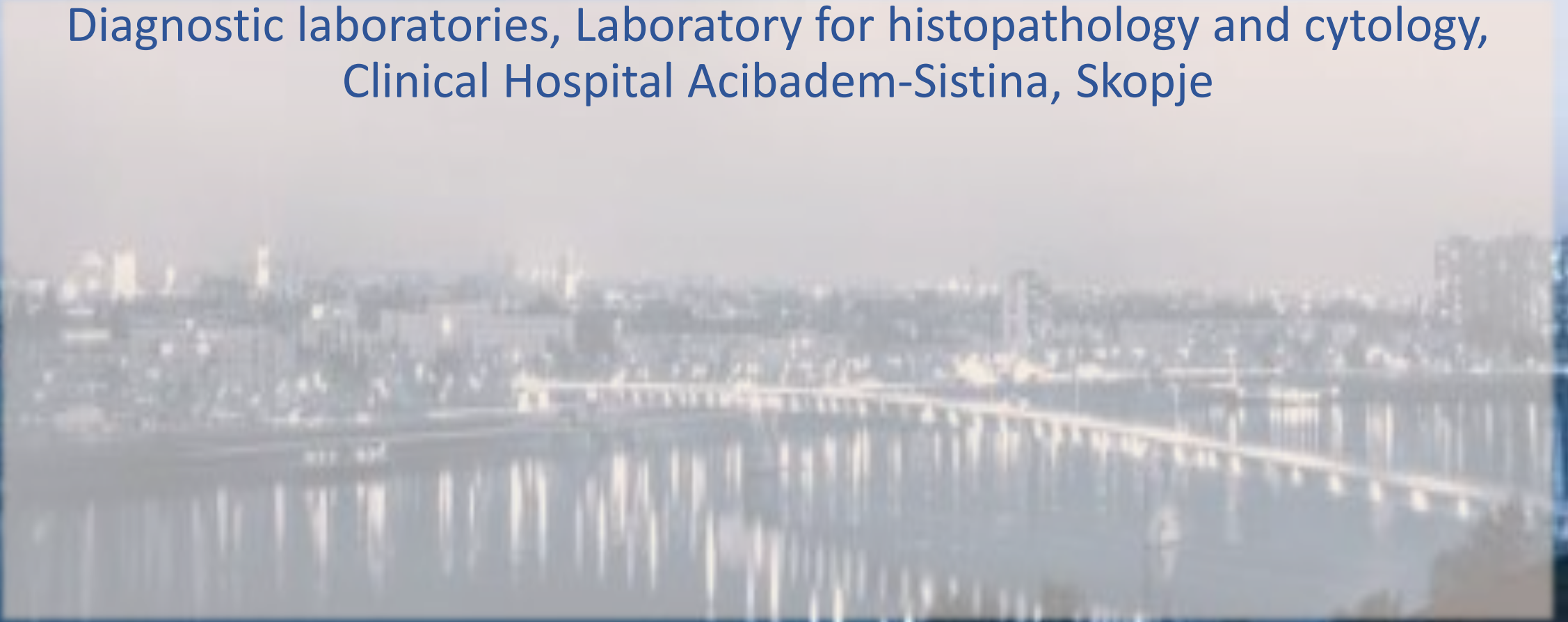


144 Studies found for: **PD-L1** | colorectal cancer

Also searched for **Neoplasm, Programmed Death Ligand 1, Colorectal Carcinoma** and more. [See Search Details](#)

Acknowledge

Diagnostic laboratories, Laboratory for histopathology and cytology,
Clinical Hospital Acibadem-Sistina, Skopje



Warm greetings from Macedonian Association of pathology



18th Nacional Congress of Serbian Pathologists and
Cytologists Association with international participation

Thank you!

9-11 May, Novi Sad, Serbia

