

# Prognostic and clinicopathological value of PD-L1 and HER2 in colorectal cancer

**Prim. d-r Blagica Krsteska**

Institute of pathology, Faculty of medicine, UKIM, Skopje

PhD at Faculty of Medical Sciences, Goce Delcev University, Stip

# Objective

- Objective: Assess the prognostic value of PD-L1 and HER2 in metastatic colorectal carcinoma (mCRC)
- Aim: Evaluate the expression of PD-L1 and HER2, analyze relationship with clinicopathological characteristics

# Materials and methods

## ❖ Where and how many cases?

- Study conducted at Clinical Hospital Acibadem-Sistina
- mCRC in 90cases

## ❖ Immunohistochemical staining and evaluation

- PD-L1(clone SP263) and HER2 (clone 4B5) in tissue microarray
- PD-L1 expression (>1%, >10%, >50% of tumor cells)
- HER2 expression (1+, 2+, 3+)

# Results

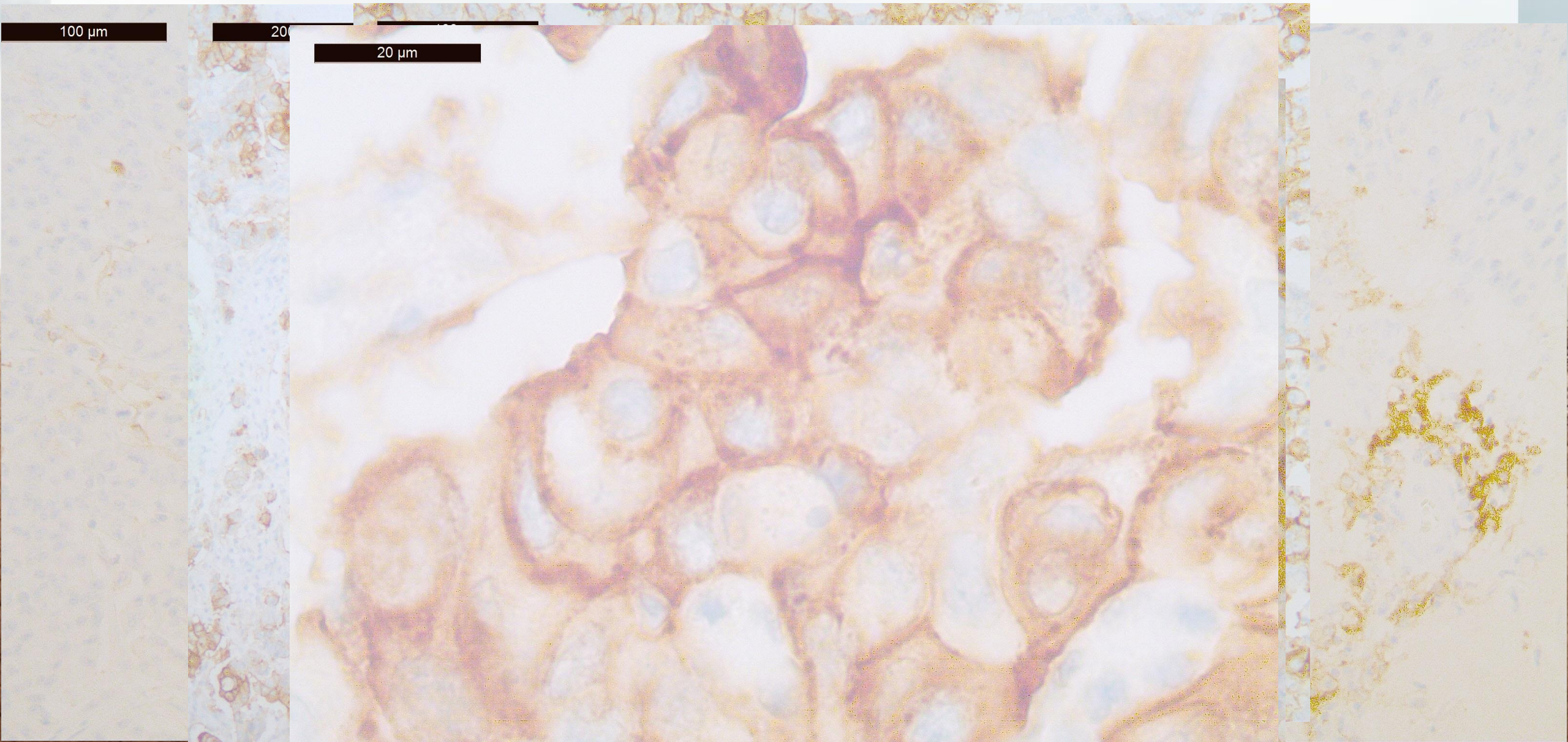
## PD-L1 expression

- Positive PD-L1 expression: 17cases (18,8%)
- Gender distribution: 10males, 7females
- Age: 88%positive cases aged >50years
- Cutoffs: >1%(10cases), >10%(4cases), >50%(3cases)

## HER2 expression

- Positive HER2 expression: 36cases (40%)
- HER2 scores:+2(32cases), +3(4cases)
- Localization: 10 HER2positive cases in right colon, 26 in left colon
- Mutations: KRAS/NRAS (12cases), BRAF(5cases), MSI(3cases)

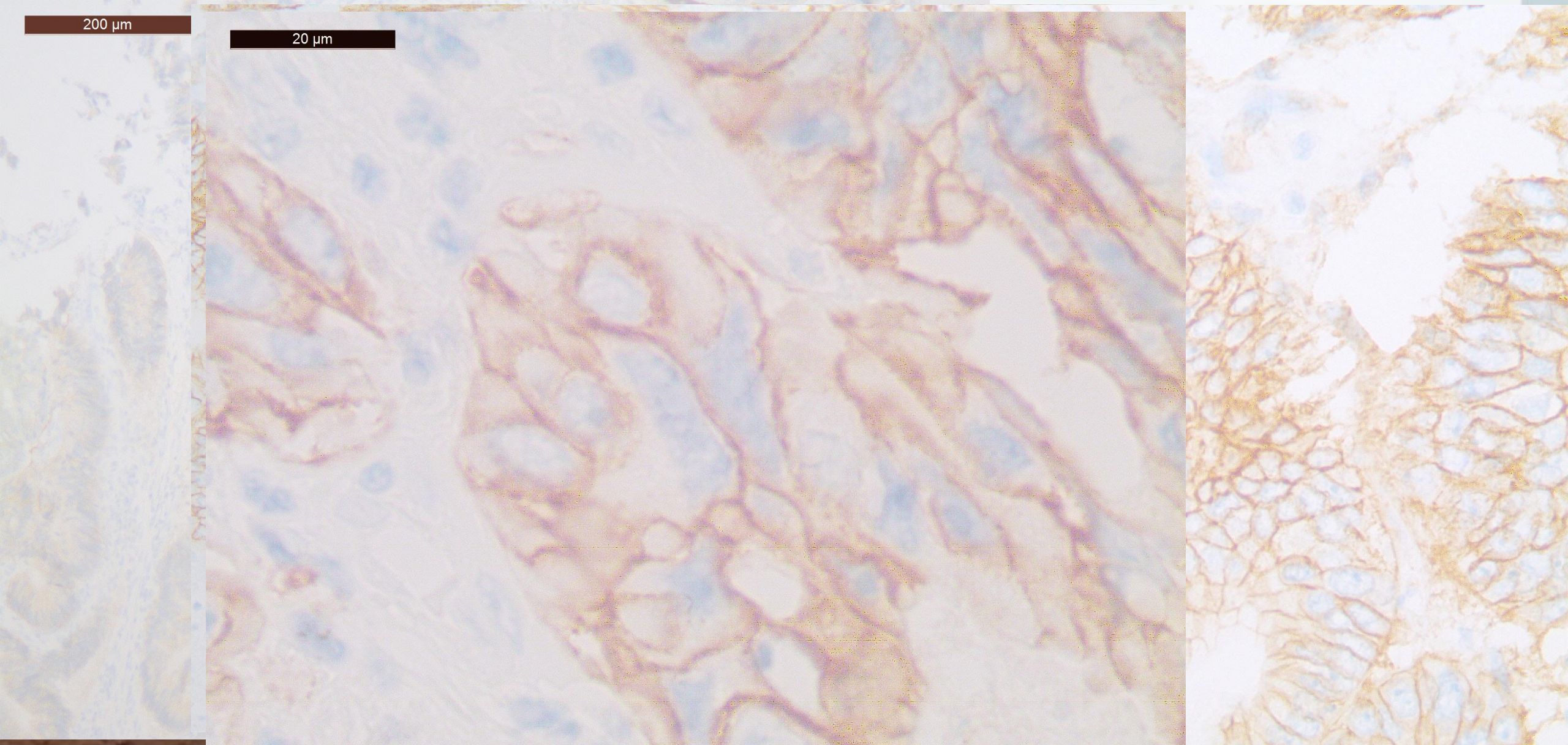
# PD-L1 expression



# HER2 expression

200  $\mu\text{m}$

20  $\mu\text{m}$



# Conclusions

- PD-L1 expression: Found in nearly 20% of cases
- Correlation with higher grade, pathological stage, BRAF mutation
- Potential for immune checkpoint inhibitor therapy
- HER2 amplification: Rare but significant for targeted therapy
- Opportunity for therapeutical targeting with small molecule and antibody-based therapy

# Ви благодарам на вниманието!

Втори интернистички гастроентерохепатолошки  
средби со меѓународно учество.

26-27.04.2024