



# Management of Miller`s Class II gingival recession with PRF membrane and subepithelial connective tissue graft combination: a case report

Asoc. Prof. D-r. Spec. Biljana Evrosimovska PhD\*

Dr. spec. Aneta Terzievska\*\*, Doc. D-r Nikolovski B\*\*\*, Dr. spec. Gligovska-Arsova A\*\*

\*University "St Cyril and Methodius", Faculty of Dental Medicine,  
Department for Oral surgery, Skopje, Macedonia

\*\*\*University "Goce Delcev", Faculty for Medical Sciences,  
Dental Medicine, Stip, Macedonia

\*\*University Dental Clinical Centre "St Pantelejmon",  
Department for Oral surgery and Implantology, Skopje, Macedonia

Coronally advanced flap (CAF) with connective tissue graft (CTG) is the technique with the most reproducible results in root coverage (RC) of gingival recessions (GR) Miller's Class I and II.

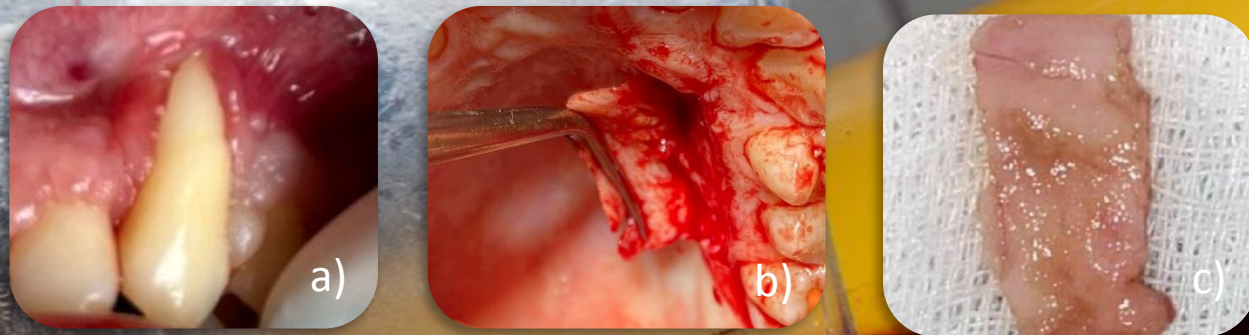


Figure 1. a) Miller's Class II gingival recession, b) donor palatal site, c) connective tissue graft (CTG)

The purpose of this report was to present a case of Miller's Class II GR treated with subepithelial connective tissue graft (SCTG) and PRF membrane where the potential of PRF to increase gingival thickness and clinical attachment level, and improve soft-tissue healing and clinical appearance was corroborated.



Platelet-rich fibrin (PRF) has been proposed as a replenishment of the healing, because of slow protein release, circulating immune cells, and angiogenesis through the release of fibroblast growth factor, vascular endothelial growth factor, and platelet-derived growth factor.

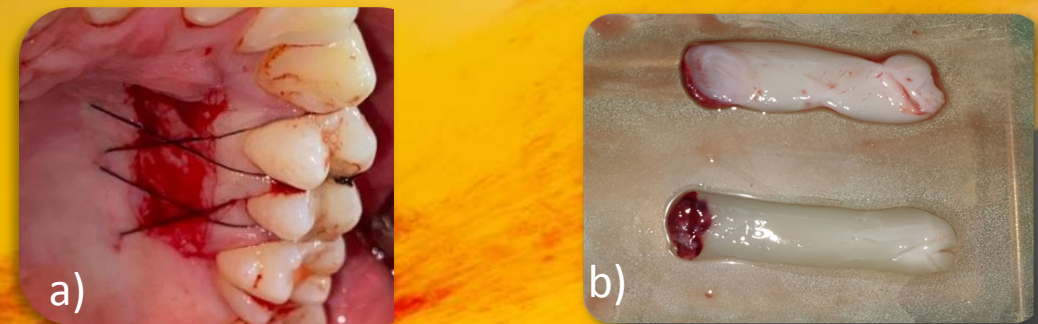


Figure 2. a) donor side covered with PRF membrane, b) prepared A-PRF membrane

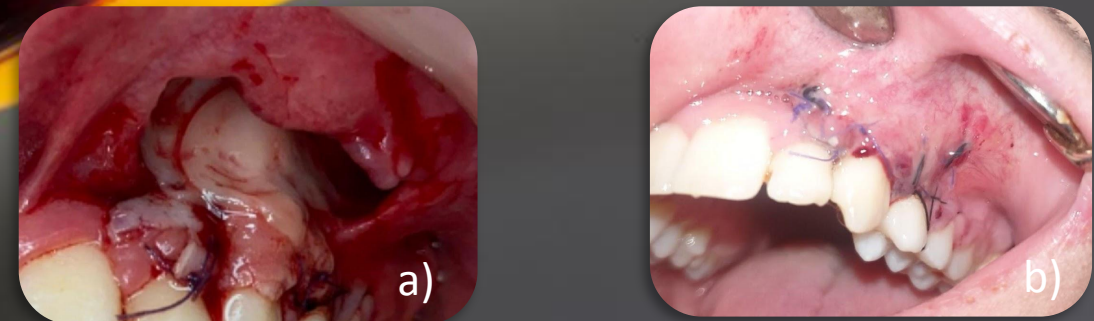


Figure 3. a) applied PRF membrane with CTG, b) surgical field after two weeks of intervention