

APPLICATION OF INDUSTRIAL AND POST-INDUSTRIAL STYLE – INTERIOR AND EXTERIOR

prof. d-r Katerina Despot, prof. d-r Vaska Sandeva, ass. Vladica Nikolovska
University Goce Delchev - Stip, Department of Architecture and Design, Macedonia,
vaska.sandeva@ugd.edu.mk

Abstract:

For industrial style, we can say, it is perfect in imperfection. Specific and easily recognizable and this is very easy to achieve. If you want a touch of industrial style in your home, while not overdoing it, it can be achieved by adding various wooden products (unprocessed), film posters, interesting lamps, old suitcases, and other decorative elements that can already have unused code at home or can be purchased from various fairs and markets and thus save money. Industrial style is a combination of different materials such as wood, metal, old bricks. Industrial style borders on Scandinavian style and vintage style and together they are a perfect complement.

Post-industrial style should not be confused with industrial design, it is usually an applied arts that encompasses different styles. But aesthetically it is derived from non-smoking technologies related to industrial development.

Industrial style in the interior and exterior characterizes the interaction between form and function, and all this emphasizes the comfort.

Nowadays post-industrial style is often used by designers for the appearance of buildings, but more often to create an original atmosphere of parks, recreation areas, restaurants, shops.

The brutality of the industrial style has been softened and sculpted with gentle and glamorous touches, which in organizing the space has transferred its unique and less luxurious approach to the design of interiors and exteriors.

Key words: landscape, architecture, design, art, style

The emergence of post-industrial style is in the XXI century, where the dominant positions in architecture are taken technology and functionality, which later became the basis of industrial style. The first attempts at this idea of industrial style appeared in the early 90's. While the industrial style emerged in the 19th century, when factories and old farms were destroyed en masse. Then, with their redemption, people buy them and turn them into their home. Industrial style strives for naturalism in the true sense of the word, which means heavy materials, unsophisticated details, dark colors. This was the only place to work.



Fig. 1. Interior in post industrial style



Fig. 2. Exterior post industrial style

Post-industrial style refers to aesthetic trends in design that emphasize sharp lines, sudden connections and dynamic interaction of movement.

Often, this style is used in the design of former industrial sites, which have been turned into a place for modern living and parks for rest and relaxation. This move is justified in relation to mega-cities, which have a lot of former factory and vacant land for new housing is green space.

The post-industrial style is economical and easy to adapt to other styles. He strives for simplicity without much detail in space. Due to the imperfections of floors and walls characteristic of this style, large financial enterprises are not needed in the finishing of these surfaces. Old metal and wood items that were previously in use can very often fit perfectly into the atmosphere.



Portable lamps



Grape harvesting furniture



Wooden bench



Modern shade structure

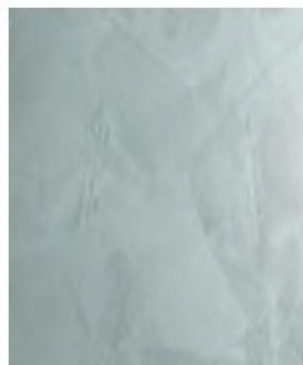
Base material: steel, metal, wood, elements may be present, such as exposed beams and pipes, concrete and brick, without decoration. The walls are unfinished or old look, the floor can be stone, concrete or wood. Key elements: natural stone or brick masonry, steel structures. beams and columns, concrete, untreated wood, a combination of matte and glossy metal. When it comes to lighting, metal lamps and chandeliers are the first choice.



Natural wood



concrete



Gypsum stainless



steel

The main color range consists of gray and brown. Primary colors: a light color palette of neutral tones, which gives warmth lighting, usually mixing the primary colors with shades of gray or black to complete the picture. But, starting with a neutral background and halftones, often in the colors of the industrial style is added a limited number of bright saturated colors: lemon yellow, orange, fuchsia, red and even indigo.



Black Metallic



Silver



Orange



Green

Post industrial style – Interior

If in the past it was not possible space without cover pipes, installation and hidden bricks, today with the growing popularity of post-industrial style more and more modern apartments go to organize the space, leaving them uncoated pipes and walls. The idea that such a space is unfinished is increasingly becoming a thing of the past, and after the industrial style enters not only homes but also commercial and office interiors.



Fig. 3. Industrial wall



Fig. 4. Steel and stone walls to create cascades.



Figure 5. This interior is built in an old tunnel .. Post industrial design itself explains how the designer can turn the chaos into a nice design, significant and functional place



Figure 6. This interior is built in an old tunnel . Post industrial design itself explains how the designer can turn the chaos into a nice design, significant and functional place.



Figure 7. This interior is built in an old tunnel .. Post industrial design itself explains how the designer can turn the chaos into a nice design, significant and functional place.



Fig. 8. This interior is built in an old tunnel .. Post industrial design itself explains how the designer can turn the chaos into a nice design, significant and functional place.

With the addition of concrete, iron and glass, the building has a fascinating exterior design that attracts passers-by like a magnet. Exposed red pipes strongly oppose the gray cement, which leads to a joyful and dynamic visual scheme. These tubes distribute lines to various bars and maintain the lighting installation.

The space has 600 square meters and is planned on two levels, showing some inspiring details. The bar reveals a marked industrial imprint through the icons in its design. The bare facade, an impressive five-meter concrete portal with a corner arch, widening the top of the rusty chimney over seven meters.

And the text in neon embedded in the concrete at the entrance which reads "mania to create something nice", makes it a synthetic and powerful sentence. "The connection between the two levels is achieved through concentric red steps covered with metal strips. Large terraces and patios offer guests the opportunity to enjoy a drink outside and think about the environment.



Fig. 9. This interior was built in an old factory (old police station). Post industrial design itself explains how a designer can turn a mess into a nice design, a significant and functional place.

Post industrial style – Exterior

In exterior design, post-industrial design is used to restore in terms of industrial wasteland, and analyze the design of environmental protection, restoration, functionality and landscape elements with a specific case.

American and European countries have taken the lead in applying environmental thought to the land restoration zone, which has a wide impact and sought after by many designers. Industrial design focuses on returning to the environmental point of view. It can be shared with new communicates with history, as well as allow the past to acquire a rebirth, forming a harmonious and the whole landscape of industrial heritage.



Fig. 10. This park is built on an old shipyard. Post industrial design itself explains how a designer can turn a mess into a nice design, a significant and functional place.

The surface includes an existing lake with fluctuations in water levels, trees, cranes, rails, towers and other machinery. Preservation of vegetation along the old shore, maintenance of the lake, protection of old trees along the river, reuse of rails, decoration of water areas and reuse of obsolete machines, all original necessary elements are carefully designed to fulfill the design intention placed at the beginning of the project.

Function reigns in this design. This is seen in the network of roads that lead to unique places and exits, reuse of housing, accessible terraces planted with plants, light tower made of water surface.

The park covers the urban structure through a network of roads and urban sites that run through the park, as well as blocks that are reused houses. The water elements merge through the entrance to the sea, which varies along with the ocean tides.

The principle of reduction and recycling of natural and artificial materials is well illustrated in this project. Indigenous vegetation, soil and natural habitats are preserved, as only plants used through the park. Machines, ports and other structures for educational, aesthetic and functional purposes.

This park is ecological, educational, and full of cultural and historical significance. It urges people to pay attention to culture and history, which has not yet been appointed as official or "traditional".



Figure 11. This park is built on an old shipyard. Post industrial design itself is explained about how the designer can turn the chaos into a nice design, significant and functional place ..



Figure 12. This park is built on an old shipyard. Opinion industrial design itself is explained about how the designer can turn the chaos into a nice design, significant and functional place.

What should make a space look industrial style:

1. Open space

Since the style originates from warehouses, which are traditionally large and open spaces with high walls, it is no wonder that the furniture in this style comes well expressed in such a space.

2. Colors

The base is usually neutral, with an emphasis on gray, white, black and beige. However, the combination can always be nourished with a touch of orange. Also, it is not bad if you use dark and cold colors such as indigo blue, dark shades of purple and green.

3. Metal and concrete

The combination of these materials is a safe and easy way to achieve industrial style.

4. Under

The floor covering should, as far as possible, imitate a concrete base (such as high-performance resin or tiles). It will look like wood paneling, especially one that shows the tooth of time.

The goal in the interior will be achieved by adding the following: wooden furniture and decorations, various wallpapers and billboards, billboards, specific lamps, ornaments of metal, concrete, wire, wood flooring, etc.

As for the solution of the walls in this style, they are often unfinished and bare. Nor should the installation of pipes be hidden, which can be left natural or colored in the color of metals, ie. necessary elements are decorative metal details in warm colors, such as copper, brass and gold, they make the definition of industrial style.

In this cruelty and naturalness, when you enter all the furniture begins to determine the style.

Conclusion

Extremely good work in post-industrial design is that you should not overdo the details. On the contrary, only a few industrial details of an existing editing style can be added.

The industrial style is especially relevant in recent years, architects and designers see it as a real challenge and interior play. Usually industrial style homes are a studio type in which the rooms are divided by appropriate zoning. The main materials used in homes made in the industrial style of glass, brick, concrete, metal and ceramics.

The main accents in the homes are the brick walls with additional rough cladding. The ceilings of the rooms are high, the lighting is with wide windows with iron windows and lamps, leaving only light bulbs or with a metal shade.

One of the functions of post-industrial design is to leave building materials visible, such as a wall in the space to be in bricks and more.

Post-industrial style in the style of interior and exterior design, it is based on the use of materials and furniture specific to industrial buildings.

The features of the post-industrial style proudly display building materials that many are trying to hide. This is an addition to the harshness of most significant designed spaces. Concrete is an extremely popular choice of post industrial decor. Although at first glance it may seem "cold", but at the same time it can be very attractive.

Literature

1. Despot, Katerina and Sandeva, Vaska (2014) *Industrijski dizajn*, ISBN: 978-608-244-074
2. Sandeva, Vaska and Despot, Katerina and Shivaceva, Galya (2020) *Learning of Modern Interiors with Eclectic Movements*. Proceedings of the 15th International Conference on Virtual Learning, 2 (15). pp. 242-246. ISSN 1844-8933
3. Васка Сандева, Катерина Деспот (2020) *Ентериер и екстериер*, ISBN: 978-608-244-631-8
4. Елена Писарева; *Историја на ентериер и мебел*, Издавач ЛТУ, Софија 2002