

FULL-ARCH FIXED OVERDENTURE IN LOWER JAW

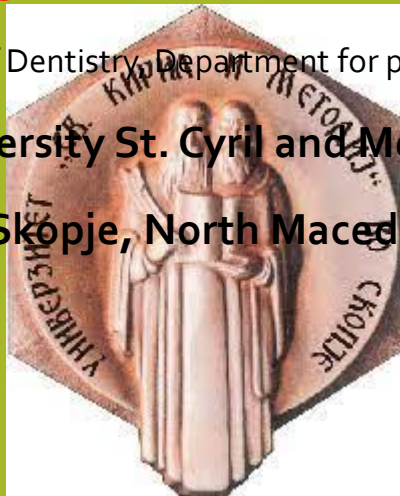
IMMEDIATE SOLUTION FOR EFFICIENT MASTICATION

Assoc. prof. d-r Aneta Mijoska Ph.D.

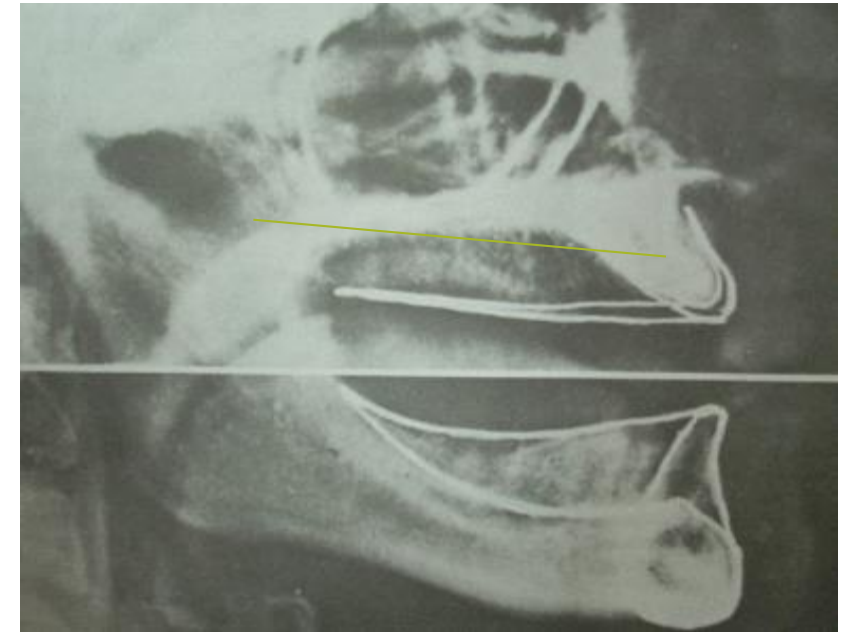
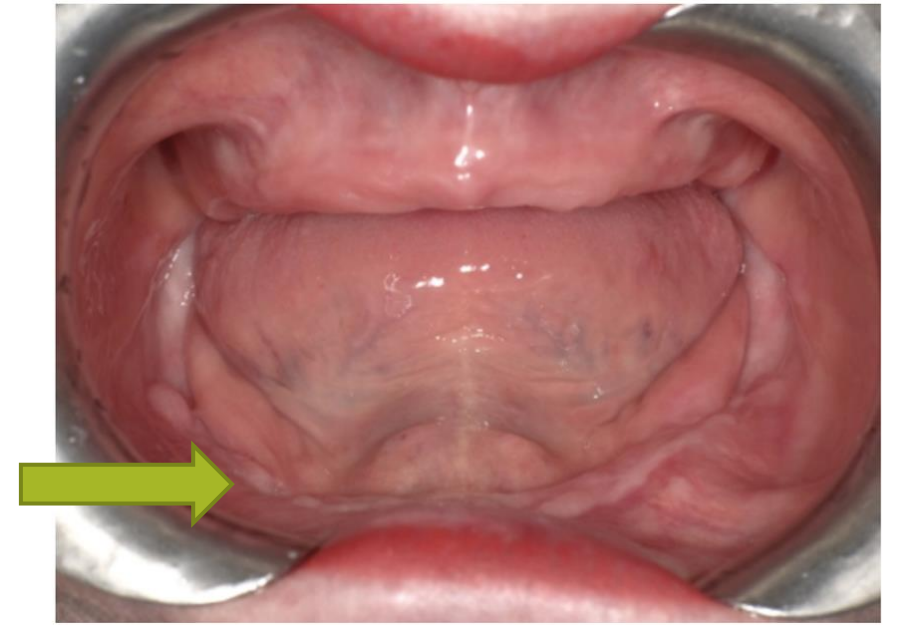
Faculty of Dentistry, Department for prosthodontics,

University St. Cyril and Methodius

Skopje, North Macedonia



Complete anodontia and alveolar ridge resorption are responsible for lack of retention and stabilization of conventional acrylic lower denture.



Aim

Hybrid prostheses on 4 implants placed immediately in the first 7 days is therapeutic solution which allows patients better chewing and increased effective masticatory force



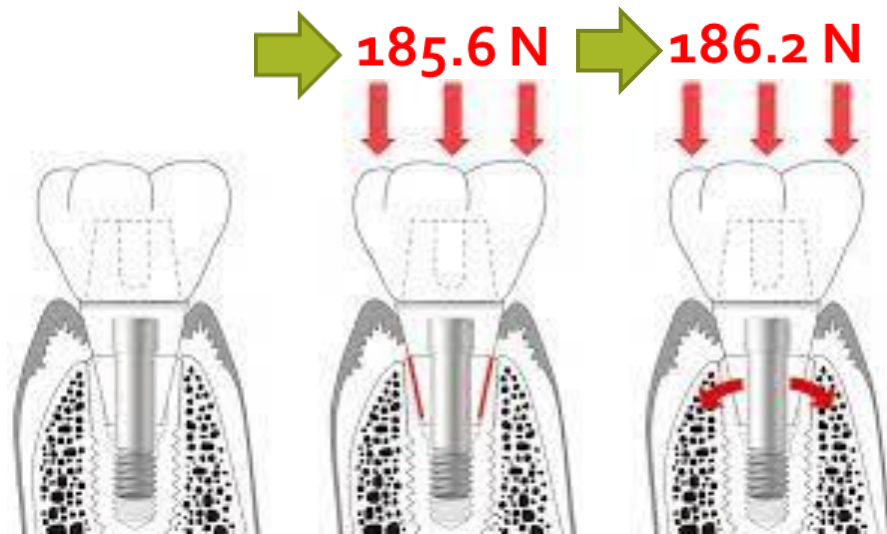
The study aims to assess the functional and subjective treatment outcomes of full-arch fixed overdenture hybrid rehabilitation.

Material and methods

- 60 patients with hybrid prostheses over 4 implants were included in the study
- The measurement of the masticatory force was done in the chewing center in the projection of the distally placed implant
- Electro-gnathic-dynamometer measured the force of the muscle elevator and depressor of the mandible
- Sensor was placed in plastic bite templates and the force value was registered three times



Results



The mean masticatory forces measured in the chewing center before implants and overdenture were **95.7 N**.

One month later with the prosthesis the value was increased to **185.6 N** and after 18 months **186.2 N**.

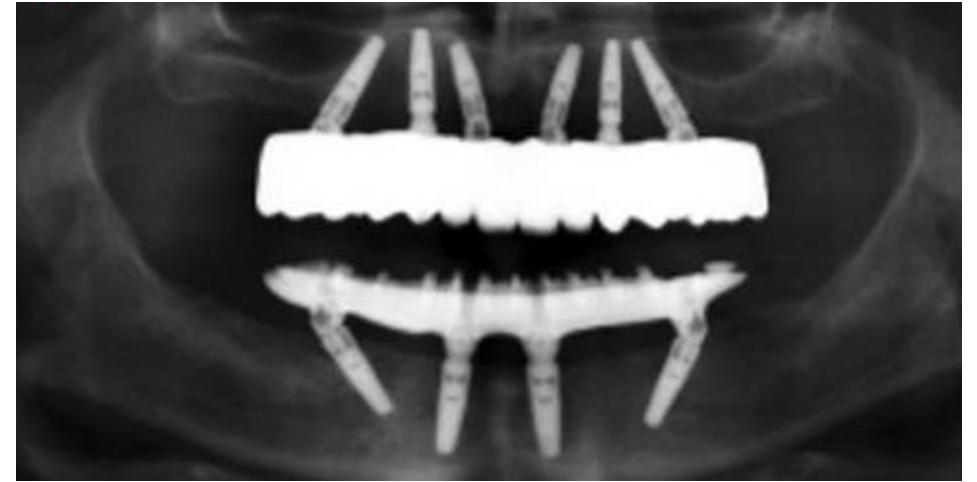
Average values of forces in natural teeth are 487.6 N, which is an advantage of a natural tooth over an implant,

The masticatory forces in the case of prostheses on implants was significantly higher than the force measured in the case of prostheses without implants.

The force in the case of prostheses on implants is significantly higher than the force measured in the case of prostheses without implants

Conclusion

Fixed hybrid prostheses are giving patient sense of security and stability, resulting in a better natural-looking smile.



There is significant increase in masticatory force in area of the distal implant

This is indicating increased resistance to load and higher efficiency of the chewing process after the treatment.



**Thank You
For Your
Attention
Any Question?**

