

26th BaSSCongress

2023 | 11-14 MAY | SKOPJE | NORTH MACEDONIA

Current Trends and Advances in Dentistry 2023

SURGICAL OPTIONS FOR ORO-ANTRAL COMMUNICATIONS CLOSURE

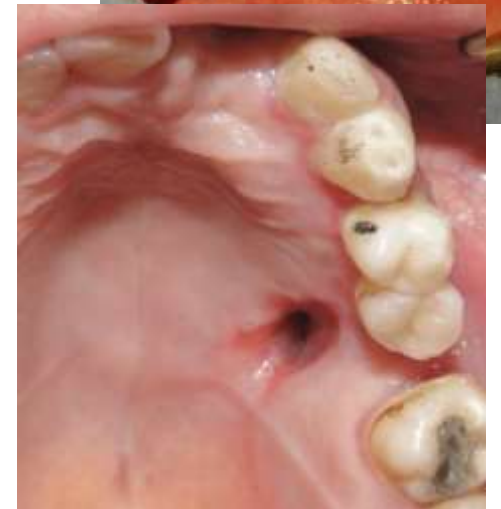
Ass. Prof. Dr. Bruno Nikolovski



Definition

An **OAC** is defined as a permanent pathological connection between the maxillary sinus and the septic oral cavity.

OAF is an epithelized, pathological, communication between these two cavities, present more than 14 days



Incidence

Age: Above 50 years

Sex: Male are more predominant

Ratio: M:F = 2:1

Common site: Maxillary 1st and 2nd molar region.
1st & 2nd premolar and maxillary canine also included.

Recurrence: 15 times higher risk of recurrence with sinusitis at follow-up.

- [Int J Implant Dent. 2019;5:13;](#)
- [Maxillofac Plastic Reconstr Surg. 2017;39:5;](#)
- [J Nat Sci Biol Med. 2012;3:203–205](#)

Fig. 3

- A) Panorama shows a suspicious lesion at the extraction site of the posterior maxilla.
- B) Opacity of the right maxillary sinus is decreased on Waters' view due to the sinus infection

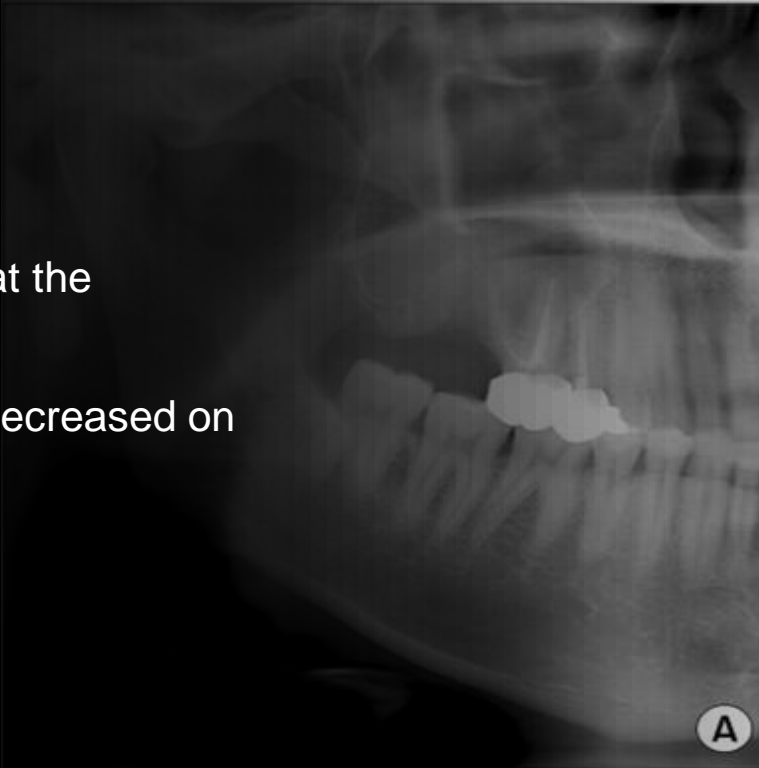
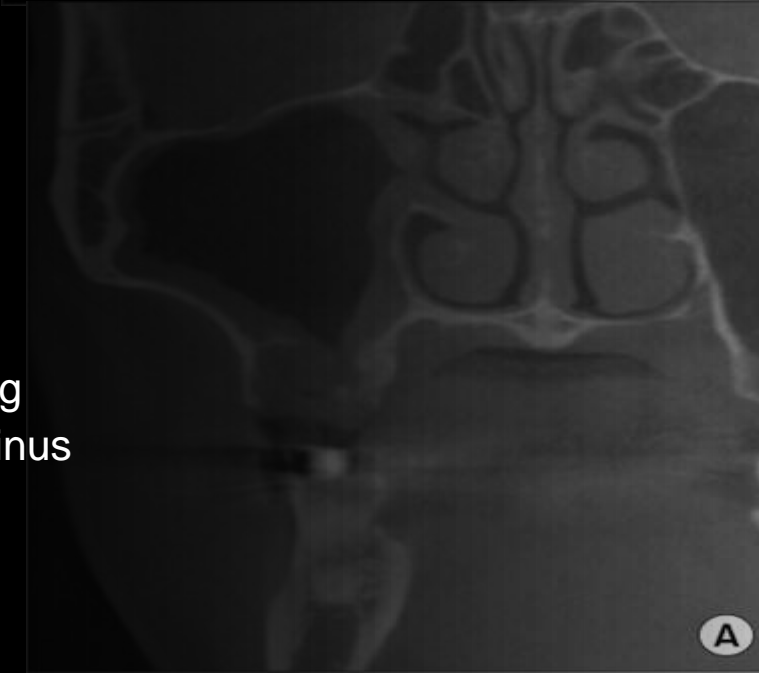


Fig. 4

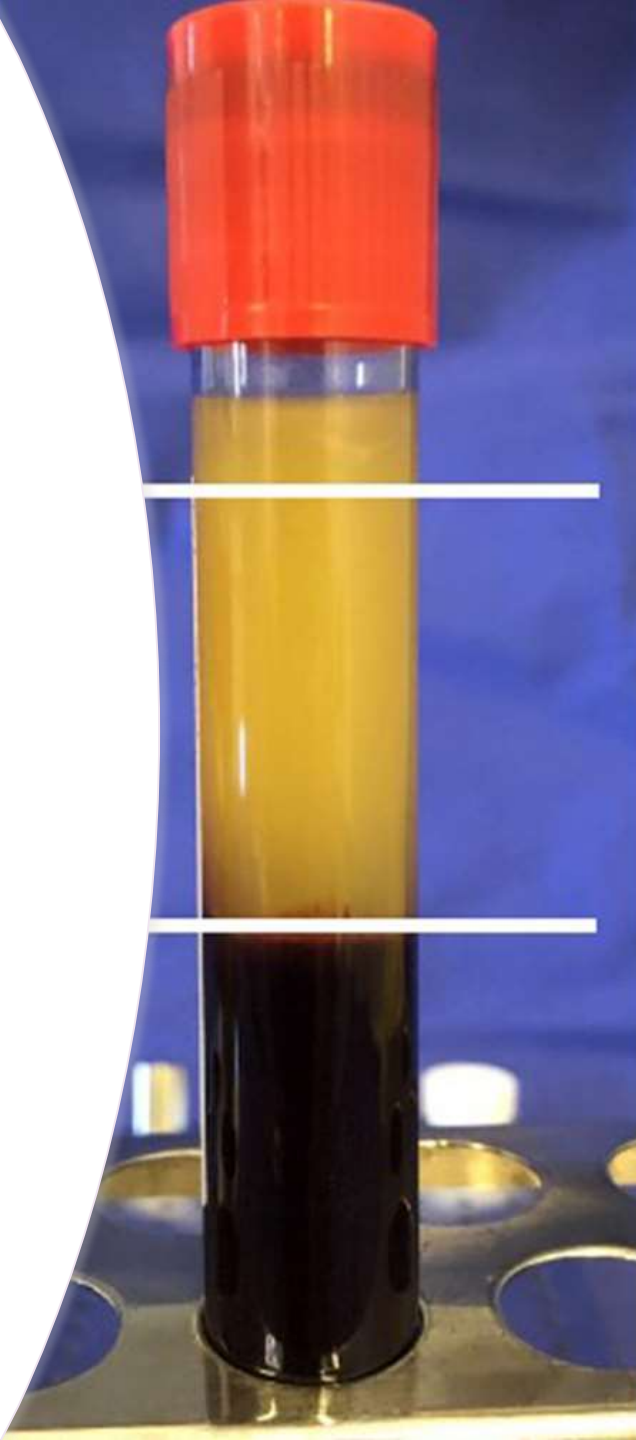
Cone-beam computed tomography imaging confirms the connected tract (A) and the sinus infection (B) on the right maxillary sinus



Oro-antral
closure using
PRF

v.s.

Buccal
advancement
flap



Success
rate
90%

Hunger, S., Krennmair, S.,
Krennmair, G. *et al.* Platelet-rich fibrin vs.
buccal advancement flap
for closure of oroantral
communications: a
prospective clinical
study. *Clin Oral
Invest* (2023).
<https://doi.org/10.1007/s00784-022-04846-7>