

**INTERNATIONAL CONFERENCE  
ON DENTAL SCIENCES  
IC-DS 2022**

**UBT-HIGHER EDUCATION INSTITUTION**

**FACULTY OF DENTISTRY**

# **CEPHALEA FROM OROFACIAL ORIGIN - CONTEMPORARY DENTAL PROSTHETIC TREATMENT**

***Ass. Prof. d-r Budima Pejkovska Shahpaska, DDS, MDS, PHD<sup>1</sup>; Prof. d-r Genc Demjaha, DDS, MBA, PHD<sup>2</sup>;***

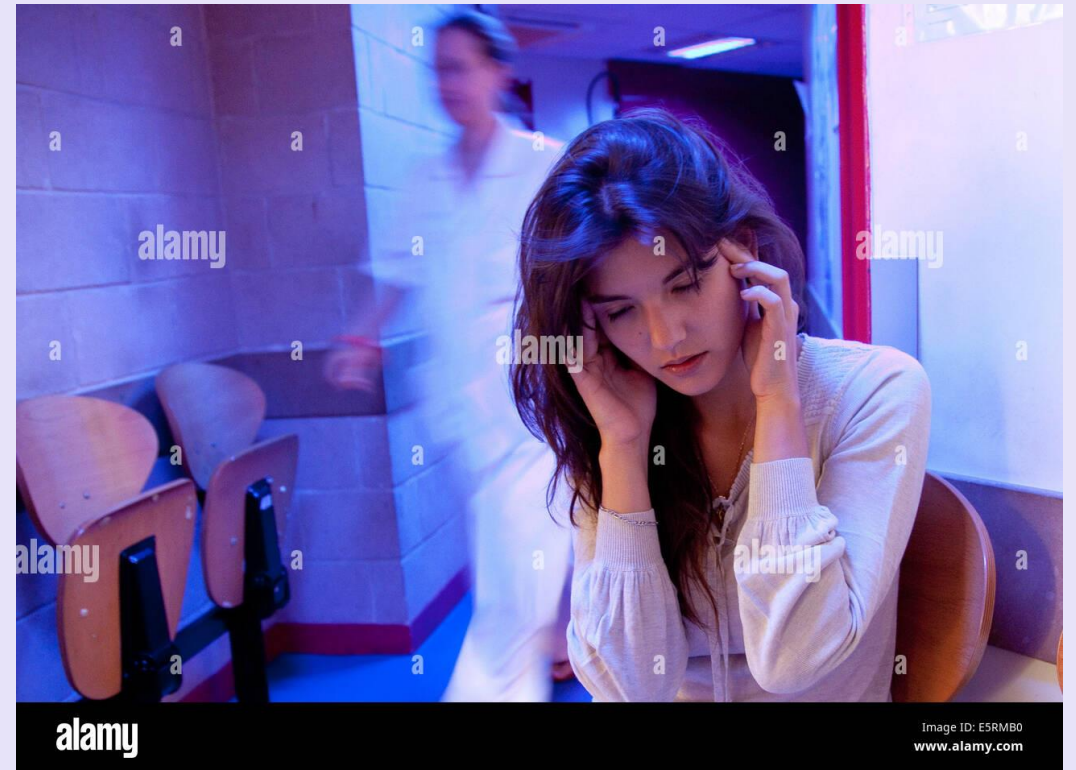
***Prof. d-r Katerina Zlatanovska, DDS, PHD<sup>1</sup>***

***<sup>1</sup>University Goce Delcev – Faculty for Medical Sciences, Department of Dentistry, Shtip, Macedonia***

***<sup>2</sup>Universtity for Business and Technology - Higher Education Institution, Faculty of Dentistry, Pristina, Kosovo***

# INTRODUCTION

- **Cephalgia from orofacial origin**  
- diffuse, mild to moderate pain
- **Constant, persistent and uninterrupted headache<sup>(1)</sup>**
- **Difference - manifestation, comparison - sinusoidal, temporal, migrenous and other types of headaches<sup>(2)</sup>**



alamy

Image ID: E5RM80  
www.alamy.com

- **Patients - pain - tightening – bandage-around the head - bilateral<sup>(3)</sup>**
- **Different time interval of duration, in periods from several days to several weeks<sup>(4,5)</sup>**
- **Significant - subjective patient findings - compared with objective clinical findings and evidence<sup>(6,7,8)</sup>**



- **Traumatic occlusion - cephalgia from orofacial origin<sup>(9,10)</sup>**
- **Day and night bruxism, parafunctions – direct etiological causes<sup>(11,12)</sup>**
- **Loss of occlusal support - the main etiological cause<sup>(1)</sup>**
- **Lauriti et al. - therapy of cephalgia from orofacial origin - often associated with TMD therapy<sup>(7)</sup>**
- **Studies – reduction of severity and frequency of headaches using occlusal splints, occlusal adjustments or physiotherapy<sup>(13)</sup>**