

TENTATIVE PROGRAM

37th International Conference on Immunology

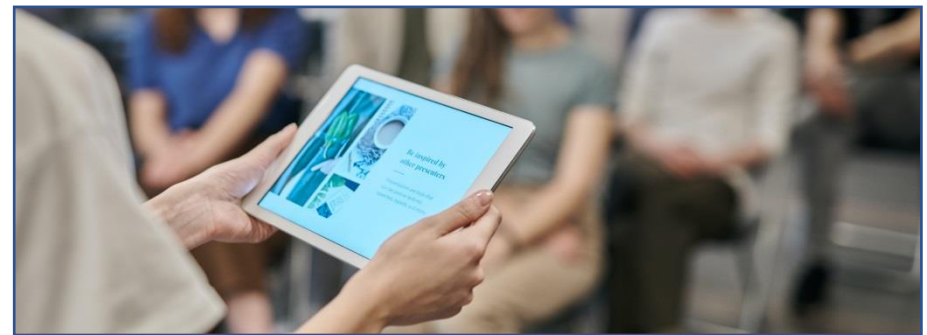
March 21-22, Brussels, Belgium

Theme:

Investigating Advancements in the Field of Immunology

MAIL: immunology@meetingsnexpo.com

URL : <https://immunology.immunologyconferences.com>



08:30-09:00	Registrations	
09:00-09:30	Introduction	
09:00-09:30	COFFEE BREAK	
09:50-11:50 Meeting Hall 01	KEYNOTE LECTURES	
09:00-09:30	Introduction	
09:00-09:30	MEETING Hall 02	
11:50-13:10	MEETING Hall 01	MEETING Hall 02
	Immune System and Immunology OncoImmunology Autoimmune Diseases and HIV	Transplantation and Computational Immunology Immunogenic Stem Cells Immunology NeuroImmunology
03:10-13:15	GROUP PHOTO	
13:15-14:00	LUNCH BREAK	
11:50-13:10	MEETING Hall 01	MEETING Hall 02
	Hematopoietic, Lymphoid Malignancies and Immune System Development Allergy and Immunology Immunization and Vaccination	Immunoresearch and Immune technology Immune Response Regulation Microbial Parasitic and Fungal Immunology Novel Corona virus (COVID-19)
16:00-16:20	COFFEE BREAK	

08:30-09:00	Registrations	
09:00-09:30	Introduction	
09:00-09:30	COFFEE BREAK	
09:50-11:50 Meeting Hall 01	KEYNOTE LECTURES	
09:00-09:30	Introduction	
09:00-09:30	MEETING Hall 02	
11:50-13:10	MEETING Hall 01	MEETING Hall 02
	Mucosal and regional Immunology Technological Innovations in Immunology Therapeutic approaches to autoimmunity	Vaccines and Immunotherapy Veterinary and Comparative Immunology Viral Immunology
03:10-13:15	GROUP PHOTO	
13:15-14:00	LUNCH BREAK	
11:50-13:10	MEETING Hall 01	MEETING Hall 02
	Immune Disorder Neonatal and Pediatric Immunology	Veterinary Allergology Diagnostic Immunology
16:00-16:20	COFFEE BREAK	

EDITORIAL BOARD MEMBERS



Brodsky
Igor E. Brodsky
University of
Pennsylvania School of
Veterinary Medicine



Sabine Ehrt
Weill Cornell Medical
College



Nancy E. Freitag
University of Illinois at
Chicago College
of Medicine



De'Broski R. Herbert
University of
Pennsylvania



**Denise M.
Monack**Stanford
University School of
Medicine



Craig R.
University of
Pennsylvania School of
Veterinary Medicine



Karen M. Ottemann
Minireview Editor
& Cover Editor
University of California
at Santa Cruz



Guy H. Palmer
Washington State
University
Paul G. Allen School
for Global Animal
Health



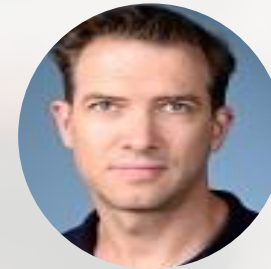
Liise-anne
Albert Einstein College
of Medicine



**Raffatellu
Manuela**
University of California
San Diego
School of Medicine



**Roy
Craig R. Roy**
Yale University School
of Medicine



Jeroen P. J.
SaeijUniversity of
California at Davis

PAST AFFILIATIONS

<p>Bernadette Jones-Freeman Department of Immunology and Pathology, Central Clinical School, Monash University, Melbourne, VIC, Australia</p>	<p>Urs M. Mörbe Mucosal Immunology group, Department of Health Technology, Technical University of Denmark, Kemitorvet, Lyngby, Denmark</p>	<p>Agnès Lehuen Laboratoire d'Excellence Inflammex, Paris, France</p>	<p>Astrid M. Westendorf Institute of Medical Microbiology, University Hospital Essen, University of Duisburg-Essen, Essen, Germany</p>	<p>Léo Bertrand Laboratoire d'Excellence Inflammex, Paris, France</p>
<p>Cecilia Johansson National Heart and Lung Institute, Imperial College London, London, UK</p>	<p>Gayathri Swami Nathan Division of Gastroenterology and Hepatology, School of Medicine, Stanford University, Stanford, CA, USA</p>	<p>Mark Wilson Francis Crick Institute, London, UK</p>	<p>Jason M. Brenchley Barrier Immunity Section, Laboratory of Viral Diseases, Division of Intramural Research, National Institute of Allergy and Infectious Diseases (NIAID), National Institutes of Health (NIH), Bethesda, MD, USA</p>	<p>Agnès Lehuen Université de Paris, Institut Cochin, INSERM U1016, CNRS UMR 8104, Université de Paris, Paris, France</p>
<p>M. A. R. Vinolo Laboratory of Immuno inflammation, Department of Genetics, Evolution, Microbiology and Immunology, Institute of Biology, University of Campinas, Campinas, Brazil</p>	<p>Ludvig M. Sollid K. G. Jebsen Centre for Coeliac Disease Research, University of Oslo, Oslo, Norway</p>	<p>Omid Akbari Department of Molecular Microbiology and Immunology, Keck School of Medicine, University of Southern California, Los Angeles, CA, USA</p>	<p>Delphyne Descamps INRAE, UVSQ, VIM, Université Paris-Saclay, Jouy-en-Josas, France</p>	<p>Freja C. M. Kirsebom National Heart and Lung Institute, Imperial College London, London, UK</p>
<p>Martin Prlic Fred Hutchinson Cancer Research Center, Vaccine and Infectious Disease Division, Seattle, WA, USA</p>	<p>Xinhua Lin State Key Laboratory of Genetic Engineering, School of Life Sciences, Zhongshan Hospital, Fudan University, Shanghai, China</p>	<p>Sabita Roy Department of Surgery, Miller School of Medicine, University of Miami, Miami, FL, USA</p>	<p>Simon Phipps Respiratory Immunology Laboratory, QIMR Berghofer Medical Research Institute, Herston, QLD, Australia</p>	<p>Cecilia Johansson National Heart and Lung Institute, Imperial College London, London, UK</p>

CITY ATTRACTIONS



Grand-Place du Bruxelles



Royal Palace of Brussels



Industrial park



Brussels flower palace



Atomium, Brussels (Belgium)



Café NOVO