



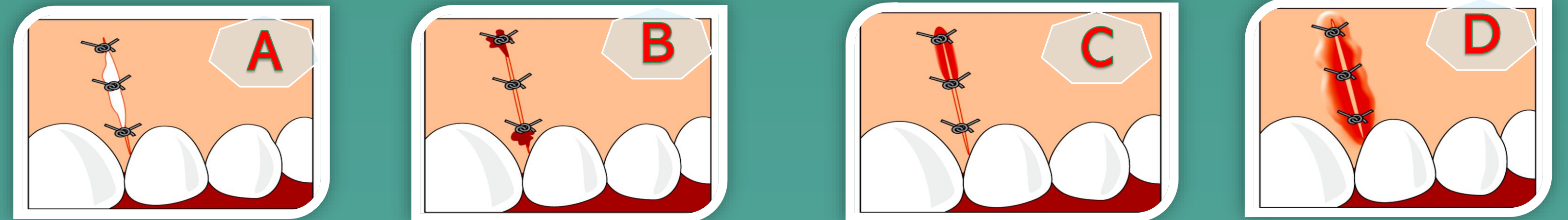
## EVALUATION OF EARLY WOUND HEALING BY DIFFERENT INDEXES AFTER SURGERY INCISION

Rogoleva Gjurovski S. Nikolovski B. Dimova C. Toneva Stojmenova V.

### Introduction:

Chronologically, the most used indexes for monitoring of oral soft tissue

- |                              |                                   |
|------------------------------|-----------------------------------|
| ▪ Landry et al. (1988)       | ▪ Healing Index (HI)              |
| ▪ Wachtel et al. (2003)      | ▪ Early Wound Healing Index (EHI) |
| ▪ Hagenaars et al. (2004)    | ▪ 3-point score                   |
| • Huang et al. (2005)        | ▪ The Wound Healing Index (WHI)   |
| • Trombelli et al. (2018)    | ▪ Gingival Healing Index (GHI)    |
| ▪ Hamzani and Chaushu (2018) | ▪ IPR Wound Healing Scale         |
| ▪ Marini et al (2018).       | ▪ Early Wound Healing Score (EHS) |



According **Marini et al (2018)** graphic representations of the CSH and CSI.

- A.** Presence of fibrin on the incision margins (1 point for CSH).
- B.** Bleeding at the incision margins (0 points for CSH).
- C.** Redness involving <50% of the incision length (1 point for CSI).
- D.** Redness involving >50% of the incision length and/or pronounced swelling (0 points for CSI).

CSH: clinical signs of haemostasis,  
 CSI: clinical signs of inflammation.

(Dent. J. 2019, 7, 86:)

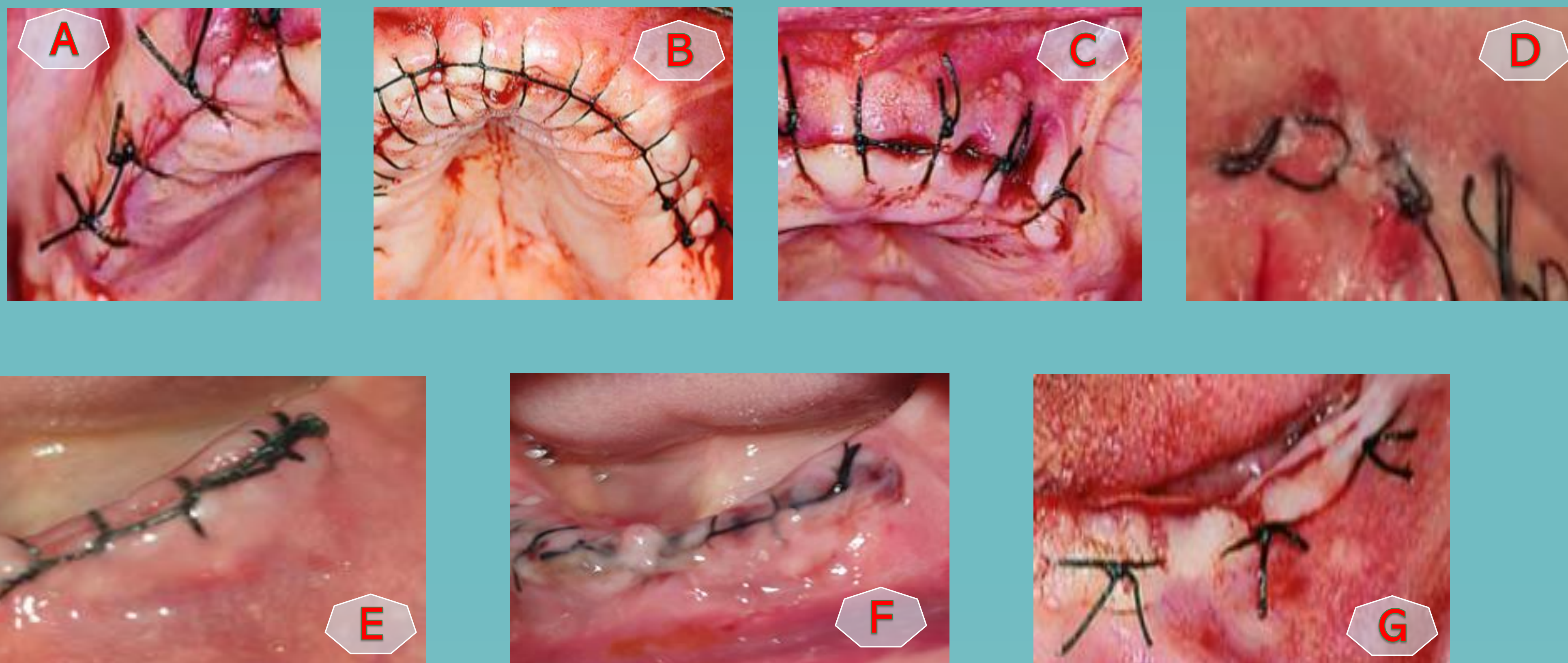
### Aim:

The aim was to highlight the usage of several qualitative and semi-quantitative assessment methods to evaluate early wound healing of periodontal soft tissues after oral and implant surgery incision.

### Material and method:

This work will emphasize the different included parameters of each index and several clinical cases. Also, there are many features which should be observed during wound healing after uncomplicated periodontal and dental implant surgery: swelling, bleeding, suture loosening, periodontal dressing instability, tooth/implant mobility etc.

### Results:



Photographs of surgical incisions evaluated according to: early wound healing score (EHS), with corresponding values of clinical signs of:

- reepithelialization (CSR)
- haemostasis (CSH) and
- inflammation (CSI)

- (A) The value of EHS is 4 (CSR:0; CSH:2; CSI:2);
- (B) The value of EHS is 4 (CSR:3; CSH:1; CSI:0);
- (C) The value of EHS is 4 (CSR:0; CSH:2; CSI:2);
- (D) The value of EHS is 5 (CSR:3; CSH:0; CSI:2);
- (E) The value of EHS is 10 (CSR:6; CSH:2; CSI:2).
- (F) The value of EHS is 10 (CSR:6; CSH:2; CSI:2).
- (G) The value of EHS is 6 (CSR:3; CSH:1; CSI:2);

### Conclusion:

Clinicians and researchers' perceptions and experience are prerequisite for assessing wound healing, as well as correct choice and usage of healing index as a useful tool for evaluation of early wound healing by primary intention in periodontal soft tissues after surgical incisions.