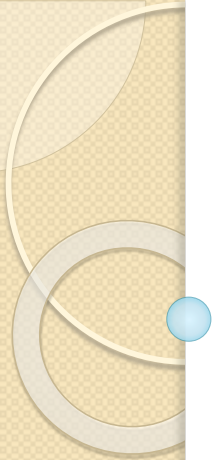




# **PATIENT WITH SEVERE MENTAL ILLNESS AND COVID**

## **19**

Stojka Dokuzova,  
Gordana Kamceva Mihailova,  
Slavica Jordanova  
Clinical Hospital Shtip



Patients with severe mental illness including schizophrenia, bipolar disorder and major depressive disorder are vulnerable population.

Sanctions affected by the Covid 19 such as quarantine, worse lifestyle factors, stigmatization, may increase stress and mental illness.

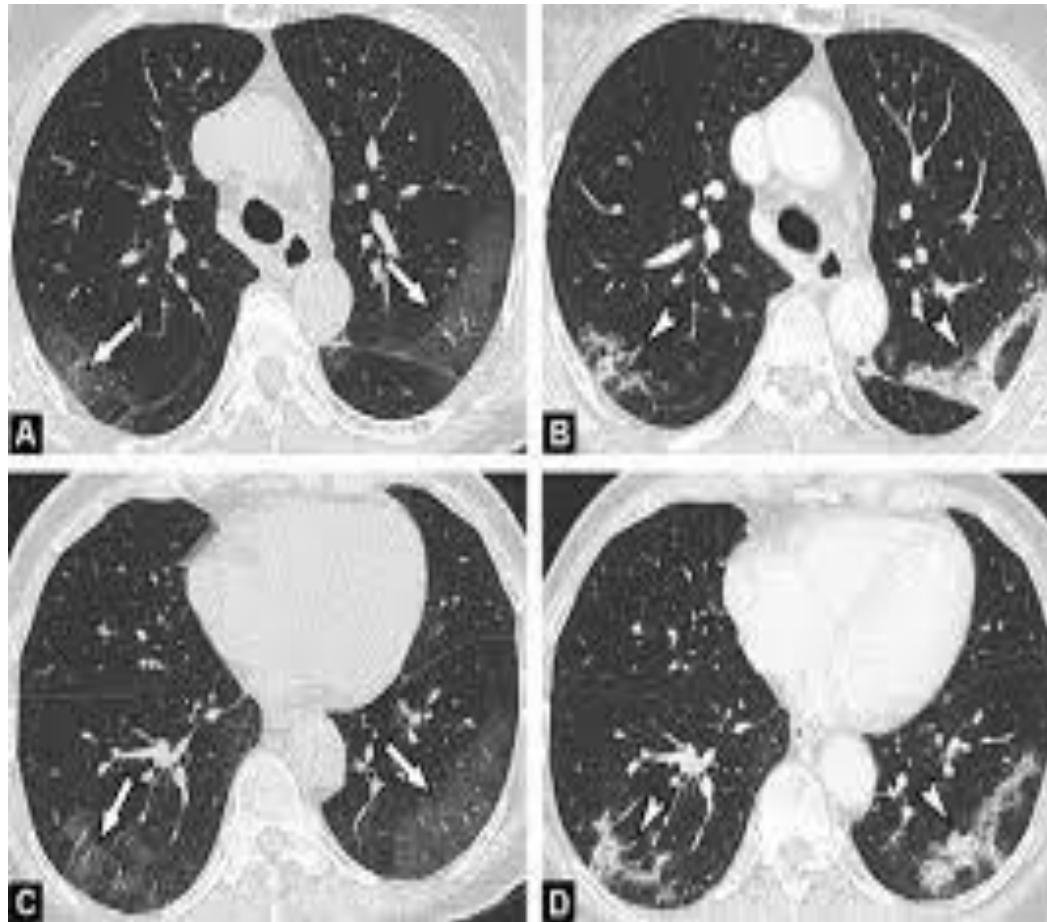
This patients are at higher risk of severe Covid19 infection and complications and can be exposed to more barriers in accesing timely health services.


At internal department in room for suspected patients of Covid 19 was hospitalized a female patient with SMI.

- At department of Cardiology were done echocardiography (EF=45%,Ao=32,LA=35,IVS=15, pathological septal moving, LBBB, D-dimeri=2210...1450...1350, crp=2,1...ac.uricum=808,urea=16...creatinin=243...LDH=273...LE=4,62...ER=3,84...PLT=451.

Evaluation of thyroid gland-heterogenous structure,carotidography, echo of abdominal and urogenital tract...after strong heteroanamnesis of her brother and TT of 37C degree with positive epidemiological questionnaire and later positive result of Covid 19 she was transferred with all protocols to Department of Infective disease.

# KT scan





CT of chest(native)-Bilateral extensive ground glass opacification with a periferal and posterior distribution,interstitialal billateral pneumonia and emphysema pulmonum.

Results-Covid I 9-28.06.2020(+); I 0.07.2020(-);  
I 2.07.2020(-);

Therapy for home-Tbl.Xarelto a 20 mg, I x I; Tbl.Vit C a I gr, 2 x I; Tbl.B-complex I x I; (I 0 days);

CAD and COPD at patients with SMI increase the risk of Covid I 9 and unpredictable events.