



## **Second All WGs UNGAP Meeting 12<sup>th</sup> – 13<sup>th</sup> February 2019**



# **Sofia, Bulgaria**

## *Table of Contents*

---

|  |    |
|--|----|
| Word of Welcome                          | 1  |
| Local organizing committee               | 2  |
| Program overview                         | 3  |
| Conference halls                         | 5  |
| Detailed program of the meeting          | 7  |
| Poster presentations                     | 13 |
| Transportation to and from Sofia Airport | 18 |
| Sightseeing in Sofia                     | 20 |
| Participants list                        | 24 |

Dear participants,

We are pleased to welcome you in Sofia, the capital of Bulgaria, for the second meeting of the European Network on Understanding Gastrointestinal Absorption-related Processes (UNGAP). We hope to sustain the high standards set by the first meeting in Leuven, Belgium, which was attended by more than 110 participants and included 19 lectures and 40+ posters by renowned experts. The scientific discussions that were initiated during the first meeting will continue in the framework of the four major challenges that UNGAP aims to address in the different working groups (WGs): differences between specific patient populations (WG1), regional differences along the gastrointestinal tract (WG2), the intraluminal behaviour of advanced formulations (WG3), and the food-drug interface (WG4). Expert talks by UNGAP members and external invited scientists will provide insight into the latest advancements on the topics of interest, whereas separate work group sessions and poster presentations will offer a platform for focused discussions on specific problems. PhD students will have the opportunity to present their work and network with top experts in their field. These activities are aimed to stimulate the cross-field dissemination of knowledge and thereby advance our understanding of drug absorption in the gut.

Keynote lectures relevant to WGs will take place in Vitosha hall on Tuesday (12<sup>th</sup> February) morning, followed by a light lunch in the poster area. The participants will then split into 4 groups for the parallel WG sessions (halls inside the hotel) and will reconvene in the afternoon for an all-WG discussion in Vitosha hall. The official conference dinner will be held in the restaurant of hotel Vitosha on Tuesday evening. On Wednesday (13<sup>th</sup> February), hot-topic presentations by all WGs will be presented in Vitosha hall.

UNGAP would not have been possible without the support of the European Cooperation in Science and Technology (COST) program, for which we are very grateful.

We hope that you will have fruitful discussions during the meeting and will enjoy your visit in Sofia!

Welcome to Sofia and to the UNGAP community!

The organizing committee

## *Local organizing committee*

---

2



**Zahari Vinarov**  
Chair  
Organizing Committee



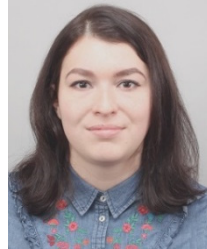
**Liliya Vinarova**  
Registration, Booklet



**Fatmegyul Mustan**  
Registration, Booklet



**Savina Paunova**  
Registration



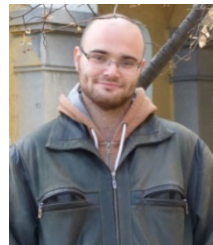
**Nelly Stanoeva**  
Registration



**Delyan Krustev**  
Booklet



**Vladimir Katev**  
Registration



**Yohan Georgiev**  
Registration

**Tuesday, 12<sup>th</sup> February**

**8:30** Registration

**9:00** Welcome

**9:15 – 12:30** Keynote lectures (All Work Groups)

*Vitosha hall, outside the Hotel*

**12:30 – 14:00** Lunch & Poster session

*Vitosha hall, outside the Hotel*

**14:00 – 16:00** Parallel Work Group sessions

*Halls inside the Hotel*

**16:30 – 17:30** Pearls of Wisdom: discussion on “gastro-retention doesn’t work?”

*Moderator:* Prof. Clive Wilson

*Vitosha hall, outside the Hotel*

**19:00** Official dinner, *Vitosha Hotel Restaurant*

## **Wednesday, 13<sup>th</sup> February**

*Venue: Vitosha Hall (outside the Hotel) all day, all WGs*

**8:30 – 10:00** WG1 meeting: How the differences in GI absorption of special populations impact the stages of drug product development

*Chair:* Dr. Katarina Vucicevic

**10:15 – 11:45** WG2 meeting: Regional differences along the GI tract

*Chair:* Prof. Maria Vertzoni

**11:45 – 12:45** Lunch & Poster session

**12:45 – 14:15** WG3 meeting: Intraluminal behaviour of advanced formulations

*Chair:* Prof. Caitriona O'Driscoll

**14:30 – 16:00** WG4 meeting: Food-drug interface

*Chair:* Prof. Maura Corsetti

**16:00 – 16:30** General discussion and Wrap up of meeting

Prof. Christos Reppas

The main hall where most of the UNGAP meeting and events will take place is **Vitosha Conference Hall**. This hall is located in a building across the street, right next to the hotel (1-2 min walking distance). One can get there easily by exiting the hotel, turning right and walking to the building across the street, where **Vitosha Conference Hall** is located (see the map below).

### How to get there: Vitosha Hall location



**Conference rooms for the parallel WG sessions (Tuesday, 12<sup>th</sup> February, after lunch)**

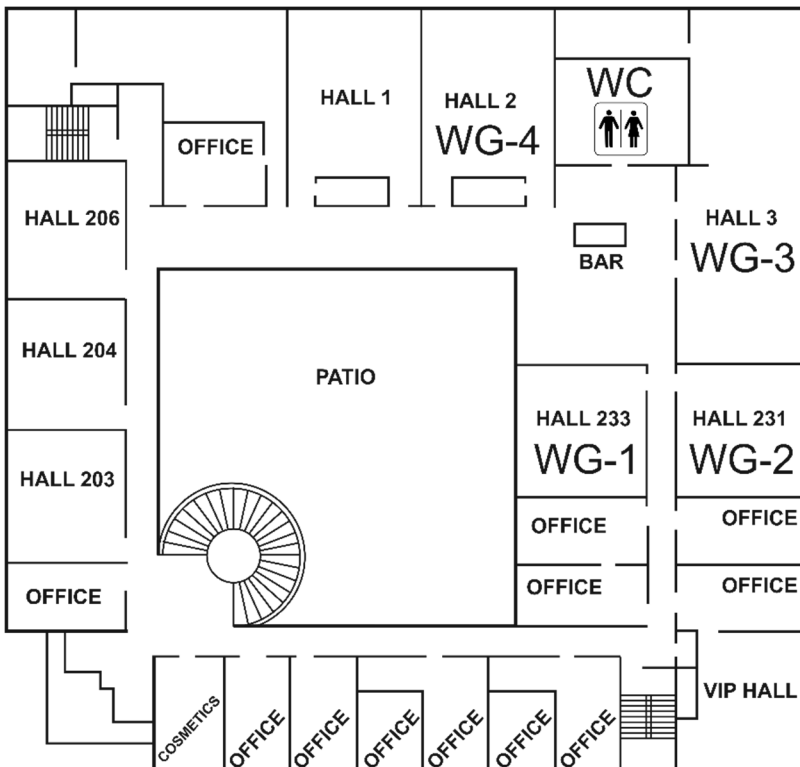
On Tuesday (12<sup>th</sup> February) after lunch, the parallel WG sessions will take place **on the second floor of the Hotel**, which can be accessed by stairs and elevator. Signs will indicate the location of the conference rooms inside the hotel.

**WG1 – Hall 233**

**WG2 – Hall 231**

**WG3 – Hall 3**

**WG4 – Hall 2**





## Tuesday 12<sup>th</sup> February (morning session)

| <b>Vitosha Conference Hall</b><br>(outside the hotel) |  |
|---|--|
| <b>8:30 – 17:00</b>                                   | Registration   |
| <b>9:00 – 9:15</b>                                    | Welcome and introduction<br><i>Prof. Patrick Augustijns, Prof. Peter Kralchevsky</i>   |
| <b>9:15 – 10:00</b>                                   | <b>Effect of food structure on nutrients release and lipid digestion</b><br><i>Dr. Myriam Grundy</i> (Reading University; Infogest)                            |
| <b>10:00 – 10:45</b>                                  | <b>Administering oral drug products in specific populations</b><br><i>Dr. Hannah Batchelor</i> (School of Pharmacy, University of Birmingham)                  |
| <b>10:45 – 11:00</b>                                  | Coffee break   |
| <b>11:00 – 11:45</b>                                  | <b>The challenges and opportunities of drug development for multimorbid patient populations</b><br><i>Prof. Sven Stegemann</i> (Graz University of Technology) |
| <b>11:45 – 12:30</b>                                  | <b>Challenges and future perspectives of amorphous solid dispersions</b><br><i>Prof. Guy Van Den Mooter</i> (University of Leuven)                             |
| <b>12:30 – 14:00</b>                                  | Light Lunch & poster session (Vitosha Hall)<br>"Meet the expert" lunch for PhD students  |

## Tuesday 12<sup>th</sup> February (afternoon session)

|  |  |
|--|--|
| <b><u>Parallel WG sessions:</u></b><br><b>WG1, Hall 233</b><br><b>WG2, Hall 231</b><br><b>WG3, Hall 3</b><br><b>WG4, Hall 2</b><br>These halls are inside the hotel! |  |
| <b>14:00 – 14:05</b>   | <b>Introduction by WG leads</b>  |
| <b>14:05 – 15:05</b>   | <b>Presentations by PhD students;<br/>PYPOM session (WG1, WG2, WG3)</b>  |
| <b>15:05 – 15:35</b>   | <b>Small group discussions related to the WG future:</b> <ul style="list-style-type: none"><li>➤ Best practices</li><li>➤ Short-term scientific missions (STSMs)</li><li>➤ Research collaborations</li><li>➤ New project proposals</li></ul> |
| <b>15:35 – 15:50</b>   | <b>Presentation of the results of the small group discussions</b>  |
| <b>15:50 – 16:00</b>   | <b>Preparation of WG summary to be presented on Wednesday</b>  |

|   |   |
|---|---|
| <b><u>All-WG session</u></b><br>Vitosha Hall, outside the hotel |   |
| <b>16:00 – 16:30</b>  | <b>Coffee break</b>   |
| <b>16:30 – 17:30</b>  | <b>Pearls of Wisdom: discussion on “gastro-retention doesn’t work?”</b><br><i>Moderator: Prof. Clive Wilson</i> |
| <b>19:00</b>  | <b>Official dinner</b><br><i>Vitosha Hotel Restaurant</i>   |

## Wednesday 13<sup>th</sup> February (morning session)

|  |   |
|--|---|
| <b><u>All-WG session</u></b><br>Vitoshka Hall (outside the hotel)  |   |
| <b>WG1 meeting: How the differences in GI absorption of special populations impact the stages of drug product development</b><br>Chair: <i>Dr Katarina Vucicevic</i> |   |
| <b>8:30 – 10:00</b>  | <b>Beyond the pill: How the differences in GI absorption of special age populations impact the drug product design</b><br><i>Dr Mine Orlu, School of Pharmacy - UCL</i><br><b>Beyond the pill: How the differences in GI absorption of special age populations impact the drug exposure and response</b><br><i>Dr Katarina Vucicevic, Faculty of Pharmacy, University of Belgrade</i><br><b>Update on current and future WG activities</b>  |
| <b>10:00 – 10:15</b>   | <b>Coffee break</b>   |
| <b>WG2 Meeting: Regional differences along the GI tract</b><br>Chair: <i>Prof. Maria Vertzoni</i>  |   |
| <b>10:15 – 11:45</b>   | <b>Physicochemical characteristics, viscosity, and volumes along the GI lumen of humans vs. dogs and the usefulness of canine data in the development of oral drug products for humans and for dogs</b><br><i>Prof. Christos Reppas, Faculty of pharmacy, University of Athens</i><br><b>Regional intestinal permeability in humans: implications for modified-release dosage forms</b><br><i>Dr. David Dahlgren, Uppsala University</i><br><b>Update on current and future WG activities</b> |

## Wednesday 13<sup>th</sup> February (afternoon session)

|  |  |
|--|--|
| 11:45 – 12:45  | Light Lunch & poster session<br>"Meet the expert" lunch for PhD students   |
| <b>WG3 Meeting: Intraluminal behavior of advanced formulations</b><br><i>Chair: Prof. Caitriona O'Driscoll</i> |  |
| 12:45 – 14:15  | <b>The impact of excipient-bile interactions on the solubility of poorly-water soluble drugs</b><br><i>Dr. Zahari Vinarov, Faculty of Chemistry and Pharmacy, Sofia University</i><br><b>Oral protein delivery-learning from the TRANSINT EU Consortium</b><br><i>Dr. Matilde Duran</i><br><b>Update on current and future WG activities</b> |
| 14:15 – 14:30  | Coffee break   |
| <b>WG4 Meeting: Food-drug interface</b><br><i>Chair: Prof. Maura Corsetti</i>                                  |  |
| 14:30 – 16:00  | <b>The utility of a pig model for predicting food dependent oral bioavailability in humans</b><br><i>Dr. Brendan Griffin</i><br><b>What do we know about the gut response to a meal in humans</b><br><i>Prof. Maura Corsetti</i><br><b>Update on current and future WG activities</b>  |
| 16:00 – 16:30  | <b>General discussion and meeting wrap up</b><br><i>Prof. Christos Reppas</i>  |



Instant & Modified Release | Solubilization | Skin Delivery | Softgels | Biologic Solutions

## Ensuring the precision you need – every time

If timing is essential, our instant and modified release portfolio provides the necessary fine mechanics for the precise setting of your products. Our functional solutions enable you to ensure exactly the right time and mode of action to reach the full potential of your APIs. With the perfect interaction of our technical expertise, exceptional quality and cutting-edge functionality of our excipients, we can make your products become a precisely functioning success with that all-important competitive advantage.

**Pharma Solutions. Focusing on your needs with platform solutions.**

 **BASF**

We create chemistry

Follow us on Twitter: [BASF\\_Pharma](#)  
[www.pharma.basf.com](http://www.pharma.basf.com)



За повече информация относно продуктите, посетете [www.metrohm.com](http://www.metrohm.com)

Метром България ЕООД, София, ул. Чипровци 12, тел. 02/953 40 64, [office@metrohm.bg](mailto:office@metrohm.bg)

| No.  | Firstname  | Lastname   | WG  | Poster title   |
|--|------------|------------|-----|--|
| <b>WG1: Differences between specific patient populations</b> |            |            |     |  |
| 1  | Marija     | Jovanovic  | WG1 | Application of population pharmacokinetic modeling approach in the assessment of drug exposure in special patient populations                    |
| 2  | Marton     | Kiss       | WG1 | Drug dosing optimisation using pediatric intestinal tissue   |
| 3  | Malgorzata | Sznitowska | WG1 | Oral paediatric antibiotics - the need for better pharmaceutical care  |
| 4  | Maiara     | Montanha   | WG1 | Reduced oral bioavailability of Amoxicillin tablets compared to suspensions in RYGB bariatric subjects   |
| 5  | Anna       | Stachowiak | WG1 | The assessment of the pharmacokinetics of tramadol and its active metabolite (O-desmethyltramadol) in extremely obese patients.                  |
| 6  | Erik       | Wollmer    | WG1 | A novel patient-specific in vitro drug release model incorporating physiological features relevant to oral drug absorption in Parkinson patients |
| 7  | Lisa       | Freerks    | WG1 | A toolbox for simulating gastrointestinal conditions in children: I. Media to simulate typical paediatric breakfasts                             |
| 40   | Maja       | Kristensen | WG1 | Application of microcontainers for targeting intestinal lesions found in inflammatory bowel disease  |

| <b>WG2: Regional differences along the gastrointestinal tract</b> |            |                |     |   |
|---|------------|----------------|-----|---|
| 8   | J. Arturo  | García-Horsman | WG2 | Animal SPECT/CT and drug absorption. (Preliminary)  |
| 9   | Elena      | Toader         | WG2 | Drug absorption and therapeutic implications in inflammatory bowel disease  |
| 10  | Sarinj     | Fattah         | WG2 | Effect of a stimulated intestinal fluid on permeability of [3H]-octreotide across human and rat intestinal tissue   |
| 11  | Christian  | Jede           | WG2 | Implementation of biorelevant bicarbonate buffer in a GI transfer model   |
| 12  | Fiona      | McCartney      | WG2 | Investigation of different intestinal permeation enhancers ex vivo and in vivo  |
| 13  | Mare       | Oja            | WG2 | Logistic classification models for pH-permeability profile to improve prediction of absorption in gastrointestinal tract  |
| 14  | Khaled     | Heissam        | WG2 | Measuring fasted state gastric motility before and after a standard BA/BE 8 oz drink of water: validation of new MRI imaging protocols against concomitant perfused manometry in healthy participants |
| 15  | Margherita | Falavigna      | WG2 | Mucus-PVPA: an in vitro permeability screening tool for the investigation of intestinal drug absorption   |



*Poster presentations at Vitosha Conference Hall*

15

|   |              |             |     |   |
|---|--------------|-------------|-----|---|
| 16  | Glenn        | Lemmens     | WG2 | Pharmacokinetic disposition of COXIBS for the prevention/treatment of colorectal cancer   |
| 17  | Marlies      | Braeckmans  | WG2 | The influence of gastric motility on intraluminal drug behavior   |
| 43  | Natashia     | Larsen      | WG2 | Achieving targeted release of freeze-dried probiotic strains by granulation, extrusion, spheronization and fluid bed coating                                |
| <b>WG3: Intraluminal behaviour of advanced formulations</b> |              |             |     |   |
| 18  | Caroline     | Alvebratt   | WG3 | A Dissolution-Digestion-Permeation Assay to Investigate the Performance of Advanced Drug Delivery Systems   |
| 19  | Grzegorz     | Garbacz     | WG3 | Bio-predictive dissolution testing of nicotinic acid  |
| 20  | Mette Sloth  | Bohsen      | WG3 | Co-existing colloidal phases of human duodenal aspirates: Intraindividual fluctuations and interindividual variability in relation to molecular composition |
| 21  | Vladimir     | Katev       | WG3 | Albendazole Solution Formulation via Vesicle-To-Micelle Transition of Phospholipid-Surfactant Aggregates  |
| 22  | Ann-Christin | Jacobsen    | WG3 | High-throughput dissolution/permeation screening of enabling formulations: Testing a novel two-compartment microtiter plate approach                        |
| 23  | Linas        | Petkevičius | WG3 | Mathematical modelling of drug release from multi-layer capsules  |

*Poster presentations at Vitosha Conference Hall*

16

|                                     |          |            |     |  |
|-------------------------------------|----------|------------|-----|--|
| 24                                  | Niklas   | Koehl      | WG3 | New insights into using lipid based suspensions for 'brick dust' molecules: case study of Nilotinib                    |
| 25                                  | Jana     | Kubackova  | WG3 | Oral delivery of oligonucleotides for local treatment of inflammatory bowel disease                                    |
| 26                                  | Gaohua   | Lu         | WG3 | PBPK Application Examples  |
| 27                                  | Jadwiga  | Paszkowska | WG3 | Predictive dissolution testing - novel methodology   |
| 28                                  | Flavia   | Laffleur   | WG3 | Smart and advanced polymeric formulations  |
| 29                                  | Janneke  | Keemink    | WG3 | The in vitro lipolysis-permeation assay predicts in vivo performance of carvedilol administered with lipids in dogs    |
| 39                                  | Jens     | Ceulemans  | WG3 | Early development of a poorly-soluble oncology drug candidate: proceeding with a conventional or enabling formulation? |
| 44                                  | Georgia  | Tsakiridou | WG3 | A simple rheological method for polymer selection in amorphous drug solid dispersions                                  |
| <b>WG4: The food-drug interface</b> |          |            |     |  |
| 30                                  | Radić    | Kristina   | WG4 | Comparison of different in vitro tools for prediction of intestinal permeability of olive derived nutraceuticals       |
| 31                                  | Annalisa | Maruca     | WG4 | Drug-food interactions evaluated by computational methods  |

## Poster presentations at Vitosha Conference Hall

---

17

|    |            |               |     |  |
|----|------------|---------------|-----|--|
| 33 | Hulya      | Buyukkestelli | WG4 | Effect of food on oral drug absorption and bioavailability   |
| 34 | Raffaella  | Catalano      | WG4 | Food-drug interactions evaluated by computational methods  |
| 35 | Tjaša      | Felicijan     | WG4 | Glass-bead flow through dissolution system: design and applicability   |
| 36 | Visnja     | Stepanic      | WG4 | In silico predictions of ADME/Tox features of herbicides   |
| 37 | Simone     | Hansmann      | WG4 | Integrating <i>in vitro</i> data into an <i>in silico</i> model to predict the influence of formulation changes: a Merck case example    |
| 38 | Aleksandar | Cvetkovski    | WG4 | Screening for nutraceutical-drug interactions toward the noncovalent interactions of their solid binary systems (Case study on Piperine) |
| 41 | James      | Butler        | WG4 | How effective are biopharmaceutics classification systems (BCS, DCS, BDDCS) at predicting food effects?                                  |
| 42 | Michael    | Grimm         | WG4 | The application of MRI to study gastric emptying in the fed state  |

### Transportation to and from Sofia Airport

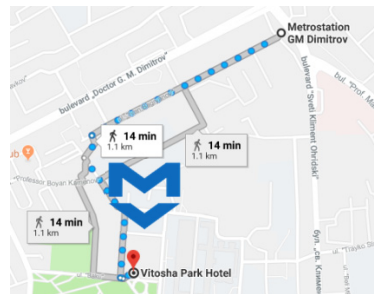
#### Inter-Terminal Transfer



Sofia Airport provides free-of-charge transportation between Terminal 1 and Terminal 2 at every 30 minutes between 07:00 and 19:00 local time, with no intermediate stops on the route. The shuttle bus stops in front of both terminals are indicated with signage and marking on the road pavement.

#### Transportation from Terminal 2 to Park Hotel Vitosha via Metro

The metro station at Sofia Airport is located in the eastern part of Terminal 2. You can reach it by following the floor markings in blue at the public area of Terminal 2. The nearest stop to your Hotel is GM Dimitrov, and after that you have a 15 min walk to the hotel.



#### Transportation to Park Hotel Vitosha organized by the hotel

Airport-to-hotel transfer is included in the room price for participants that have booked a room in hotel Vitosha by sending an e-mail to [reservations@vitoshaparkhotel.com](mailto:reservations@vitoshaparkhotel.com) and have mentioned the booking reference "COST-UNGAP 11-13.02.2019" in the body text of the e-mail.

Note that airport-to-hotel transfer will be provided only to participants who have sent their flight information to [reservations@vitoshaparkhotel.com](mailto:reservations@vitoshaparkhotel.com) and have received official confirmation for the transfer from the hotel staff.

### Getting to and from the airport by Taxi

For your comfort and safety, we recommend the services of the taxi operator OK Supertrans AD as contractual partner of Sofia Airport. You can request the service at the offices of **OK Supertrans** in the Arrivals of Terminal 1 and Terminal 2. And the floor markings in yellow will lead you to the taxi stand area.



+359 2 973 2121

[www.oktaxi.net](http://www.oktaxi.net)

#### **IMPORTANT!**

***We recommend that you do not use taxi services offered outside the office of the taxi operator or in front of the terminal to avoid the risk of abuse.***

When you are checking out of the Hotel and heading to the Airport, you can ask the Hotel Reception to call you a taxi.

**The cost of a Taxi should be under 15 Levs BGN (7.50 EUR) 1 EUR = 2 Bulgarian Levs**

***For more transportation options to and from the Airport, you can check: <https://www.sofia-airport.bg/en/passenger>***

**Please note that the costs for transport by taxi are NOT REFUNDED by COST, unless in special circumstances (see COST Vademecum)**

### ***Sightseeing in Sofia***

The beginning of your tour of Sofia starts at the Metro station “Sofia University Kliment Ohridski”. You can go there by going to Metro station “GM Dimitrov” (see page 28) and getting on a train for “Obelya” for 3 stops. Also a Taxi is always an option, the cost should be under 10 BGN (5 EUR).

**When you get there the first thing you will see the main building of Sofia University.**



The University was founded in 1888 and was originally named after the brothers Evlogi and Hristo Georgiev who donated the land and funds for the construction of the university building. Their statues are seated outside the main entrance. The international design competition was originally won by Henri Breansson in 1907, his designs were however later modified by Yordan Milanov. Nowadays only part of the actual university campus is based here, with many faculties located around the city.

### **1. Then you will head to Alexander Nevsky Cathedral**

Named after Alexander Nevski, a Russian Tsar who saved Russia from invading Swedish troops in 1240 and the patron saint of Tsar Alexander II, who was also referred to as Bulgaria's Tsar Osvoboditel (Liberator), since it was his troops that finally brought about Bulgaria's liberation from Ottoman rule. Some of Russia and Bulgaria's best artists of the time worked on the interior



with its five aisles and three altars. Built between 1904-1912 in the Neo Byzantine style, typical for Russian churches in the 19th century, the cathedral is 76 metres long and 53 metres wide and is said to hold up to 7000 people. The belfry is 52 metres high and houses 12 bells. Working hours: 7:00 – 18:00

### **2. Your next stop is Tsar Osvoboditel (Liberator) Monument and the Parliament**

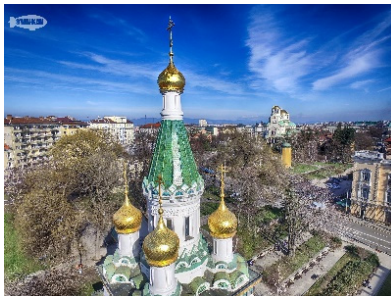
This fine bronze statue portrays the Russian Tsar Alexander II on horseback and is a gesture of gratitude to the Russian Tsar and his troops. In front of the bronze statue is the building of the National Assembly.



### **3. On your way to Metro station “Serdika” you will pass through a couple of landmarks.**

#### **The Russian Church**

This small decorative church with its golden onion domes was built between 1912 and 1914, (by many of the same workers from the nearby Nevski Cathedral) to appease a Russian diplomat afraid to worship in Bulgarian churches. The church is named after St. Nikolai 'the miracle maker'. To this day wishes are written on slips of paper and placed in the wooden box by the white marble sarcophagus of Bishop Serafim (1881 – 1950), who is buried in the crypt.



#### **The Bulgarian Presidency**

Today the Bulgarian president has his official chambers here facing the archaeological museum and his guard of honor has been photographed by many a tourist. The guards change every hour on the hour but if you want the full pomp and ceremony be here on the first Wednesday of the month at 12:00 when you can see the official changing of the guards complete with music, shouting and weapon brandishing.



### Complex Ancient Serdika

The Church of St George is an Early Christian red brick rotunda that is considered the oldest building in Sofia, the capital of Bulgaria. It is situated behind the Sheraton Hotel, amid remains of the ancient town of Serdika.

Built by the Romans in the 4th century, it is a cylindrical domed structure built on a square base. It is believed that it was built on the site of a pagan temple, though the original purpose of the building was for public use. The building is famous for the 12th-, 13th- and 14th-century frescoes inside the central dome. Three layers of frescoes have been discovered, the earliest dating back to the 10th century. Magnificent frescoes of 22 prophets over 2 metres tall crown the dome. Painted over during the Ottoman period, when the building was used as a mosque, these frescoes were only uncovered and restored in the 20th century.



### Saint Sofia Statue

Towering above the intersection of Maria Louisa Blvd and Todor Alexandrov Blvd in the commercial heart of the city, Sofia was erected in 2001 – not without some controversy – replacing Lenin's monument, which was removed from the same spot at the time of the democratic changes. Eight meters in height, the copper and bronze statue by the sculptor Georgi Chapkanov, stands on a 16 meter high pedestal. Adorned with the symbols of power (crown), fame (wreath) and wisdom (owl), the crown is also a reference to the Goddess of Fate – Tjuhe, inspired by the old emblem of Sofia dating back to 1900.



### 4. Your last stop on the tour is St. Kyriaki Church (St. Nedelya)

From here you can explore the different cafes and restaurants on **Vitosha Boulevard**, which is the main pedestrian street in the heart of Sofia. If you want to see more of Sofia, at the end of Vitosha Boulevard there is a park across the street in which you can find the **National Palace of Culture**.

To go back to the Hotel you can get a Metro from Serdika Station Line 1 to Mladost, your stop is the 4th – GM Dimitrov Station.



To get a Metro from the National Palace of Culture, go to NDK station, which is at the intersection where you crossed from boulevard Vitosha to the park, and get a train to Obelya for one stop (Serdica Station), this is Line 2 of the Metro, so you will have to transfer to Line 1 and get a train to Mladost for four stops to GM Dimitrov Station.

**The price of the Metro is 1.60 Levs**, tickets can be bought at the vending machines at every entrance or at the cashiers boot next to the barriers. Also you can buy a daily pass from the cashier for 4 Levs.



## Participants list

24

| No. | Last name      | First name    | E-mail                           | Affiliation                           | Country         |
|-----|----------------|---------------|----------------------------------|---------------------------------------|-----------------|
| 1   | Alsenz         | Jochem        | Jochem.Alsenz@roche.com          | F. Hoffmann-La Roche AG               | Switzerland     |
| 2   | Alvebratt      | Caroline      | caroline.alvebratt@farmaci.uu.se | Uppsala University                    | Sweden          |
| 3   | Augustijns     | Patrick       | patrick.augustijns@kuleuven.be   | University of Leuven                  | Belgium         |
| 4   | Batchelor      | Hannah        | h.k.batchelor@bham.ac.uk         | University of Birmingham              | UK              |
| 5   | Beloqui Garcia | Ana           | ana.beloqui@uclouvain.be         | University of Leuven                  | Belgium         |
| 6   | Bermejo Sanz   | Maria del Val | mbermejo@goumh.umh.es            | Universidad Miguel Hernandez          | Spain           |
| 7   | Bogataj        | Marija        | marija.bogataj@ffa.uni-lj.si     | University of Ljubljana               | Slovenia        |
| 8   | Bogdanova      | Svetla        | svbogdanova@gmail.com            | Sofia University                      | Bulgaria        |
| 9   | Bohsen         | Mette Sloth   | bohsen@sdu.dk                    | University of Southern Denmark        | Denmark         |
| 10  | Boltnarová     | Barbora       | boltnarb@faf.cuni.cz             | Charles University                    | Czech Republic  |
| 11  | Braeckmans     | Marlies       | marlies.braeckmans@kuleuven.be   | University of Leuven                  | Belgium         |
| 12  | Brandl         | Martin        | mmb@sdu.dk                       | University of Southern Denmark        | Denmark         |
| 13  | Butler         | James         | james.m.butler@gsk.com           | GlaxoSmithKline                       | UK              |
| 14  | Catalano       | Raffaella     | catalano@unicz.it                | University Magna Graecia of Catanzaro | Italy           |
| 15  | Ceulemans      | Jens          | jceulem3@its.jnj.com             | Janssen Pharmaceutica                 | Belgium         |
| 16  | Code           | Christian     | christian.code@sund.ku.dk        | University of Copenhagen              | Denmark         |
| 17  | Corsetti       | Maura         | maura.corsetti@nottingham.ac.uk  | University of Nottingham              | UK              |
| 18  | Cvetkovski     | Aleksandar    | aleksandar.cvetkovski@ugd.edu.mk | Goce Delcev University                | Macedonia, FYR  |
| 19  | Dahlgren       | David         | david.dahlgren@farmaci.uu.se     | Uppsala University                    | Sweden          |
| 20  | De Wildt       | Saskia        | Saskia.deWildt@radboudumc.nl     | Radboud UMC                           | The Netherlands |

## Participants list

25

|    |                  |             |                                |                                       |                |
|----|------------------|-------------|--------------------------------|---------------------------------------|----------------|
| 21 | Denkov           | Nikolai     | nd@lcpe.uni-sofia.bg           | Sofia University                      | Bulgaria       |
| 22 | Devold           | Tove        | tovede@nmbu.no                 | Norwegian University of Life Sciences | Norway         |
| 23 | Dou              | Liu         | ucnvdou@ucl.ac.uk              | UCL School of Pharmacy                | UK             |
| 24 | Dupont           | Didier      | didier.dupont@inra.fr          | INRA, STLO                            | France         |
| 25 | Durán-Lobato     | Matilde     | matilde.duran.lobato@gmail.com | Universidad de Santiago de Compostela | Spain          |
| 26 | El               | Sedef Nehir | sedef.el@ege.edu.tr            | Ege University                        | Turkey         |
| 27 | Falavigna        | Margherita  | margherita.falavigna@uit.no    | UiT The Arctic University of Norway   | Norway         |
| 28 | Fattah           | Sarinj      | sarinj.fattah@ucd.ie           | University College Dublin             | Ireland        |
| 29 | Felicijan        | Tjaša       | tjasa.felicijan@ffa.uni-lj.si  | University of Ljubljana               | Slovenia       |
| 30 | Flaten           | Gøril Eide  | Goril.flaten@uit.no            | UiT The Arctic University of Norway   | Norway         |
| 31 | Fotaki           | Nikoletta   | n.fotaki@bath.ac.uk            | University of Bath                    | UK             |
| 32 | Freerks          | Lisa        | lisa.freerks@uni-greifswald.de | University of Greifswald              | Germany        |
| 33 | Garbacz          | Grzegorz    | g.garbacz@physiolution.pl      | Physiolution                          | Poland         |
| 34 | García-Horsman   | J. Arturo   | arturo.garcia@helsinki.fi      | University of Helsinki                | Finland        |
| 35 | Gavins           | Francesca   | Francesca.gavins.13@ucl.ac.uk  | UCL School of Pharmacy                | UK             |
| 36 | Georgiev         | Yohan       | j.georgiev94@abv.bg            | Sofia University                      | Bulgaria       |
| 37 | Gjorgieva Ackova | Darinka     | darinka.gorgieva@ugd.edu.mk    | Goce Delcev University                | Macedonia, FYR |
| 38 | Griffin          | Brendan     | brendan.griffin@ucc.ie         | University College Cork               | Ireland        |
| 39 | Grimm            | Michael     | grimmm@uni-greifswald.de       | University of Greifswald              | Germany        |
| 40 | Grundy           | Myriam      | m.m.grundy@reading.ac.uk       | University of Reading                 | UK             |

## Participants list

26

|    |                         |              |  |   |                 |
|----|-------------------------|--------------|--|---|-----------------|
| 41 | Gutman                  | Roe          | roeg@migal.org.il                      | MIGAL – Galilee Research Institute                  | Israel          |
| 42 | Hansmann                | Simone       | Simone.hansmann@merckgroup.com         | Merck KGaA  | Germany         |
| 43 | Heissam                 | khaled       | khaled.heissam@nottingham.ac.uk        | University of Nottingham                            | UK              |
| 44 | Holas                   | Ondrej       | ondrej.holas@faf.cuni.cz               | Charles University                                  | Czech Republic  |
| 45 | Holm                    | Rene         | rholm@its.jnj.com                      | Janssen Pharmaceutica                               | Belgium         |
| 46 | Holmstock               | Nico         | nholmsto@its.jnj.com                   | Janssen Pharmaceutica                               | Belgium         |
| 47 | Ilyasoglu Buyukkestelli | Hulya        | hulyailyasoglu@gmail.com               | Ege University                                      | Turkey          |
| 48 | Jacobsen                | Ann-Christin | acj@sdu.dk                             | University of Southern Denmark                      | Denmark         |
| 49 | Jede                    | Christian    | Christian.jede@external.merckgroup.com | Merck KGaA  | Germany         |
| 50 | Jovanović               | Marija       | marijaj@pharmacy.bg.ac.rs              | University of Belgrade                              | Serbia          |
| 51 | Kalyan Chirumamilla     | Siri         | jordan.thomas@certara.com              | Certara UK  | India           |
| 52 | Káňová                  | Kristýna     | astriik@gmail.com                      | Institute of Microbiology, Czech Academy of Science | Czech republic  |
| 53 | Katev                   | Vladimir     | vk@lcpe.uni-sofia.bg                   | Sofia University                                    | Bulgaria        |
| 54 | Keemink                 | Janneke      | janneke.keemink@farmaci.uu.se          | Uppsala University                                  | Sweden          |
| 55 | Kersiene                | Milda        | milda.kersiene@ktu.lt                  | Kaunas University of Technology                     | Lithuania       |
| 56 | Kirilov                 | Bogdan       | Bogdan.Kirilov@bda.bg                  | Bulgarian Drug Agency                               | Bulgaria        |
| 57 | Kiss                    | Marton       | marton.kiss@radboudumc.nl              | Radboud UMC   | The Netherlands |
| 58 | Klein                   | Sandra       | Sandra.Klein@uni-greifswald.de         | University of Greifswald                            | Germany         |
| 59 | Koehl                   | Niklas       | niklas.koehl@ucc.ie                    | University College Cork                             | Ireland         |

## Participants list

27

|    |                   |               |                                  |  |                |
|----|-------------------|---------------|----------------------------------|--|----------------|
| 60 | Koskinen          | Mikko         | mikko.koskinen@orionpharma.com   | Orion Pharma                           | Finland        |
| 61 | Koziolek          | Mirko         | mirko.koziolek@uni-greifswald.de | University of Greifswald               | Germany        |
| 62 | Kristensen        | Maja Nørgaard | maja.kristensen@sund.ku.dk       | University of Copenhagen               | Denmark        |
| 63 | Kristl            | Albin         | kristla@ffa.uni-lj.si            | University of Ljubljana                | Slovenia       |
| 64 | Krustev           | Delyan        | Dk@lcpe.uni-sofia.bg             | Sofia University                       | Bulgaria       |
| 65 | Kubačková         | Jana          | kubackja@faf.cuni.cz             | Charles University                     | Czech Republic |
| 66 | Kuentz            | Martin        | martin.kuentz@fhnw.ch            | FHNW, School of Life Sciences          | Switzerland    |
| 67 | Laffleur          | Flavia        | Flavia.Laffleur@uibk.ac.at       | University of Innsbruck                | Austria        |
| 68 | Lemmens           | Glenn         | glenn.lemmens@kuleuven.be        | University of Leuven                   | Belgium        |
| 69 | Lu                | Gaohua        | gaohua.x.lu@gsk.com              | GSK                                    | UK             |
| 70 | Madla             | Christine     | christine.madla.16@ucl.ac.uk     | UCL School of Pharmacy                 | UK             |
| 71 | Maran             | Uko           | uko.maran@ut.ee                  | University of Tartu                    | Estonia        |
| 72 | Maruca            | Annalisa      | maruca@unicz.it                  | University Magna Graecia of Catanzaro  | Italy          |
| 73 | Matias            | Ana           | amatias@ibet.pt                  | iBET                                   | Portugal       |
| 74 | Matilainen        | Laura         | laura.matilainen@orionpharma.com | Orion Pharma                           | Finland        |
| 75 | Matos             | Melanie       | melanie.matos@ibet.pt            | iBET                                   | Portugal       |
| 76 | McCartney         | Fiona         | fiona.mccartney@ucd.ie           | University College Dublin              | Ireland        |
| 77 | Melendez-Martinez | Antonio       | ajmelendez@us.es                 | Universidad de Sevilla                 | Spain          |
| 78 | Miljus            | Goran         | goranm@inep.co.rs                | INEP Institute, University of Belgrade | Serbia         |
| 79 | Moens             | Frédéric      | frederic.moens@prodigest.eu      | ProDigest                              | Belgium        |
| 80 | Montanha          | Maiara        | maiara.teofilos@gmail.com        | University of Lisbon                   | Portugal       |

## Participants list

28

|     |                  |           |                               |   |                |
|-----|------------------|-----------|-------------------------------|---|----------------|
| 81  | Mullertz         | Anette    | anette.mullertz@sund.ku.dk    | University of Copenhagen                          | Denmark        |
| 82  | Mustan           | Fatmegyul | fm@lcpe.uni-sofia.bg          | Sofia University                                  | Bulgaria       |
| 83  | O'Driscoll       | Caitriona | caitriona.odriscoll@ucc.ie    | University College Cork                           | Ireland        |
| 84  | Oja              | Mare      | mare.oja@ut.ee                | University of Tartu                               | Estonia        |
| 85  | Orlu             | Mine      | m.orlu@ucl.ac.uk              | UCL School of Pharmacy                            | UK             |
| 86  | Pappinen         | Sari      | sari.pappinen@orionpharma.com | Orion Pharma                                      | Finland        |
| 87  | Paszkowska       | Jadwiga   | j.paszkowska@physiolution.pl  | Physiolution                                      | Poland         |
| 88  | Paunova          | Savina    | sp@lcpe.uni-sofia.bg          | Sofia university                                  | Bulgaria       |
| 89  | Petkevičius      | Linas     | linas.petkevicius@mif.vu.lt   | Vilnius University                                | Lithuania      |
| 90  | Pinto            | Joana     | joana.pinto@rcpe.at           | RCPE  | Austria        |
| 91  | Ponchel          | Gilles    | gilles.ponchel@u-psud.fr      | Université Paris-Sud<br>Université Paris Saclay   | France         |
| 92  | Rades            | Thomas    | thomas.rades@sund.ku.dk       | University of Copenhagen                          | Denmark        |
| 93  | Radić            | Kristina  | kradic@pharma.hr              | University of Zagreb                              | Croatia        |
| 94  | Reppas           | Christos  | reppas@pharm.uoa.gr           | National and Kapodistrian<br>University of Athens | Greece         |
| 95  | Ruiz Picazo      | Alejandro | alejandrорuizpicazo@gmail.com | Miguel Hernandez<br>University                    | Spain          |
| 96  | Sassene          | Philip    | pjsa@novonordisk.com          | Novo Nordisk                                      | Denmark        |
| 97  | Semjonov         | Kristian  | kristian.semjonov@gmail.com   | University of Tartu                               | Estonia        |
| 98  | Skupin-Mrugalska | Paulina   | p_skupin@wp.pl                | Poznan University of<br>Medical Sciences          | Poland         |
| 99  | Smilkov          | Katarina  | katarina.smilkov@ugd.edu.mk   | Goce Delcev University                            | Macedonia, FYR |
| 100 | Stachowiak       | Anna      | stachowiak.an@gmail.com       | Poznan University of<br>Medical Sciences          | Poland         |

## Participants list

29

|     |                |             |                                |   |                |
|-----|----------------|-------------|--------------------------------|---|----------------|
| 101 | Stanoeva       | Nelly       | ns@lcpe.uni-sofia.bg           | Sofia University  | Bulgaria       |
| 102 | Stepanic       | Visnja      | stepanic@irb.hr                | Rudjer Boskovic Institute   | Croatia        |
| 103 | Sznitowska     | Malgorzata  | msznito@gumed.edu.pl           | Medical University of Gdansk                                      | Poland         |
| 104 | Tcholakova     | Slavka      | sc@lcpe.uni-sofia.bg           | Sofia University  | Bulgaria       |
| 105 | Tekin          | Hamdi       | hamditekin@arel.edu.tr         | Istanbul Arel University  | Turkey         |
| 106 | Teleki         | Alexandra   | alexandra.teleki@farmaci.uu.se | Uppsala University  | Sweden         |
| 107 | Thijs          | Tim         | tim.thijs@kuleuven.be          | University of Leuven  | Belgium        |
| 108 | Toader         | Elena       | toader.elena@yahoo.com         | University of Medicine and Pharmacy                               | Romania        |
| 109 | Tran           | Thuy        | thu-thuy.tran@servier.com      | Technologie Servier   | France         |
| 110 | Tsakridou      | Georgia     | gtsakiridou@pharmathen.com     | Pharmathen S/A and National and Kapodistrian University of Athens | Greece         |
| 111 | Uslu           | Mehmet Emin | m.eminuslu@mail.com            | Manisa Celal Bayar University                                     | Turkey         |
| 112 | Valentová      | Kateřina    | kata.valentova@email.cz        | Institute of Microbiology of the Czech Academy of Sciences        | Czech Republic |
| 113 | Van den Mooter | Guy         | guy.vandenmooter@kuleuven.be   | University of Leuven  | Belgium        |
| 114 | Vertzoni       | Maria       | vertzoni@pharm.uoa.gr          | National and Kapodistrian University of Athens                    | Greece         |
| 115 | Vinarov        | Zahari      | zv@dce.uni-sofia.bg            | Sofia University  | Bulgaria       |
| 116 | Vinarova       | Liliya      | li@dce.uni-sofia.bg            | Sofia University  | Bulgaria       |

## Participants list

30

|     |             |                |                                |                          |         |
|-----|-------------|----------------|--------------------------------|--------------------------|---------|
| 117 | Vitali Čepo | Dubravka       | dvitali@pharma.hr              | University of Zagreb     | Croatia |
| 118 | Vucicevic   | Katarina       | kacav@pharmacy.bg.ac.rs        | University of Belgrade   | Serbia  |
| 119 | Wilson      | Clive          | clivegwilson@mac.com           | Strathclyde University   | UK      |
| 120 | Wolf        | Julian Dominik | j.wolf@thiomatrix.com          | ThioMatrix GmbH          | Austria |
| 121 | Wollmer     | Erik           | erik.wollmer@uni-greifswald.de | University Greifswald    | Germany |
| 122 | Yde Larsen  | Natashia       | natashia.larsen@sund.ku.dk     | University of Copenhagen | Denmark |



Funded by the Horizon 2020 Framework Programme  
of the European Union

This booklet is based upon work from COST Action UNGAP CA16205 supported by COST (European Cooperation in Science and Technology)

[www.cost.eu](http://www.cost.eu)

COST (European Cooperation in Science and Technology) is a funding agency for research and innovation networks. Our Actions help connect research initiatives across Europe and enable scientists to grow their ideas by sharing them with their peers. This boosts their research, career and innovation