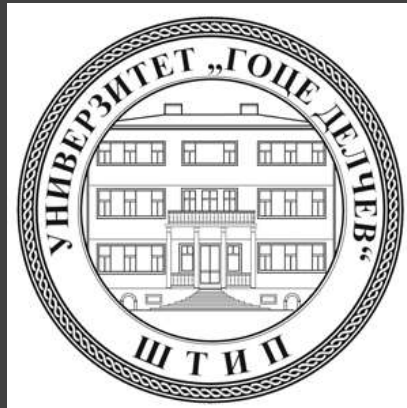
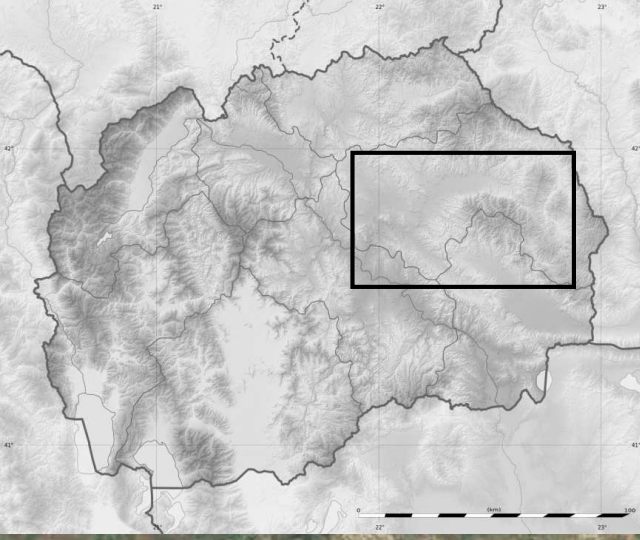


Trajče Nacev  
Darko Stojanovski

THE ECONOMY OF THE BREGALNICA BASIN DURING  
THE ROMAN PERIOD AND THE LATE ANTIQUITY

---





# The Bregalnica Valley

Lozovo

Kochani

Delchevo

Vinica

Trbotivishte

Karbinci

Shtip

Berovo

Radovish

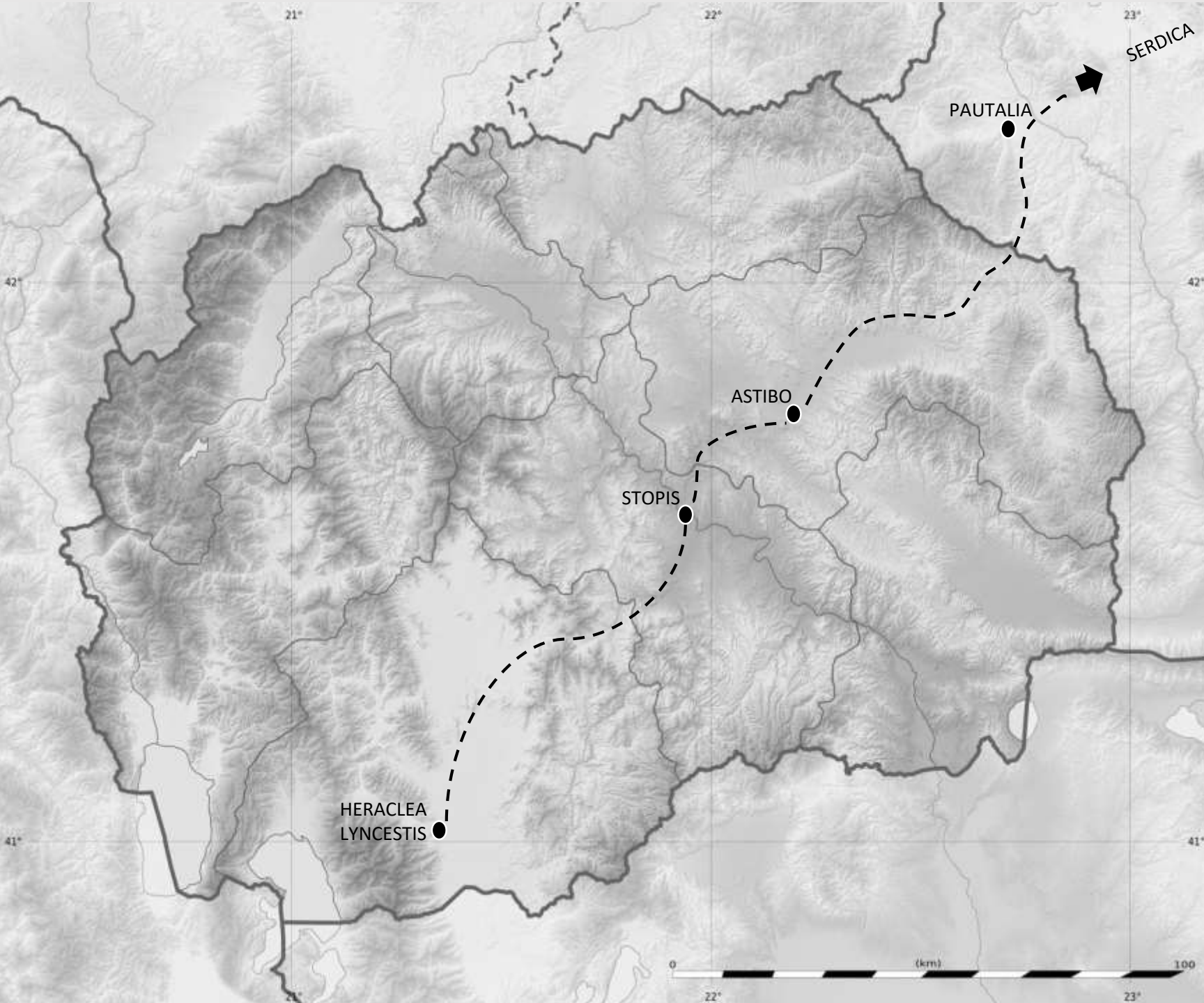
Gradsko

Google Earth

image © 2018 CNES / Airbus  
© 2018 Google  
image © 2018 DigitalGlobe  
image Landsat / Copernicus



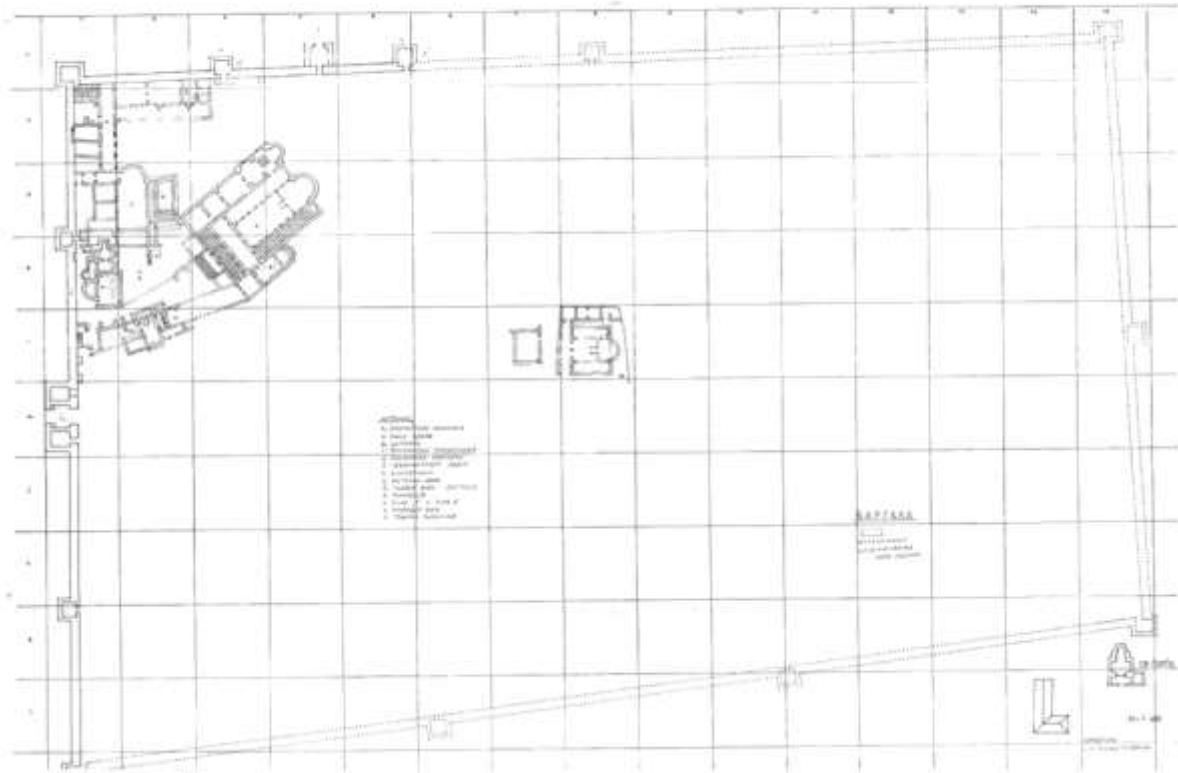
10 km



DIAGONAL ROAD  
FROM HERACLEA LYNCESTIS  
TO SERDICA,  
CONECTING VIA EGNATIA  
WITH VIA MILITARIS

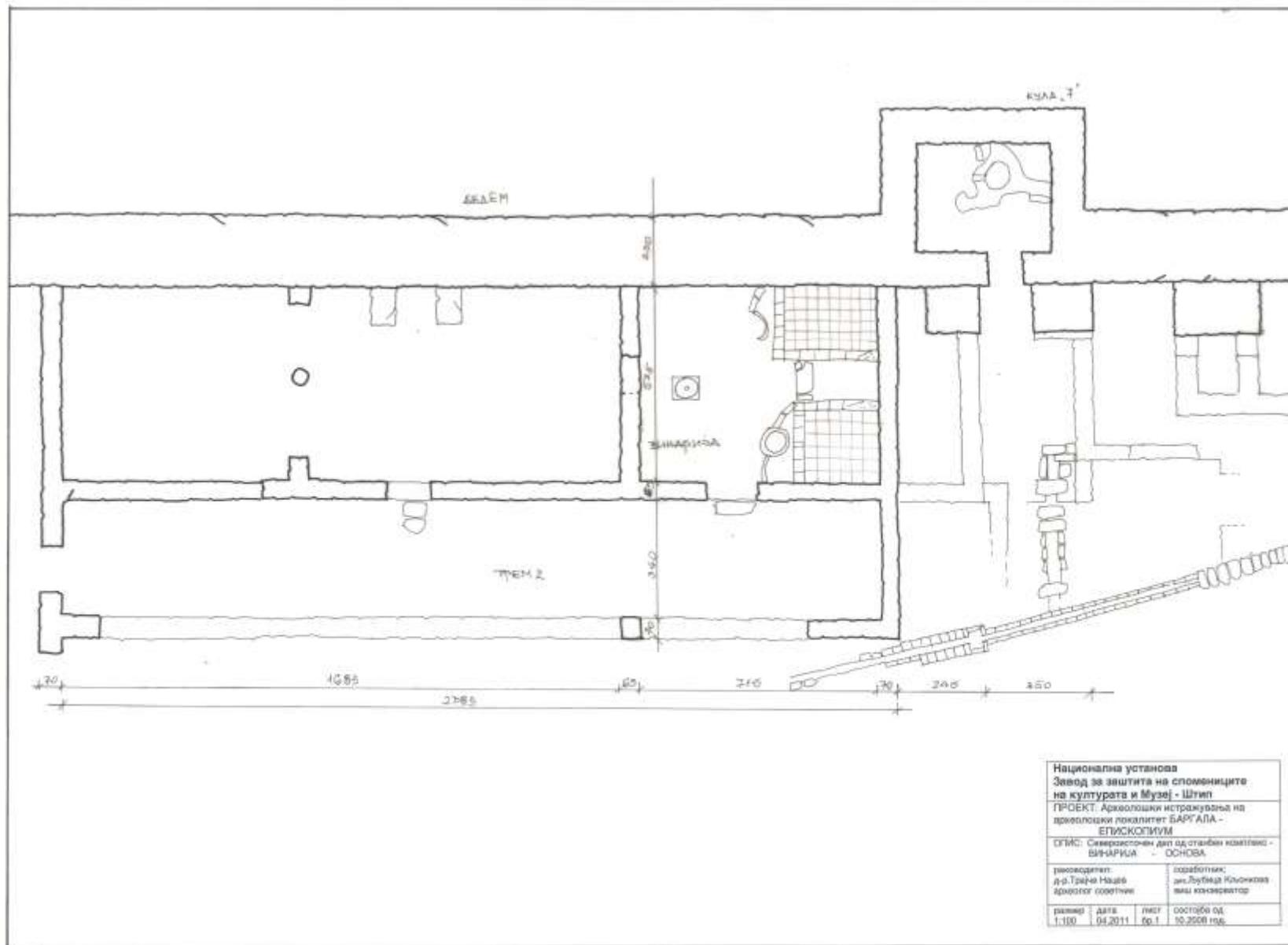
# BARGALA

plan and satellite image





# The winery of Bargala



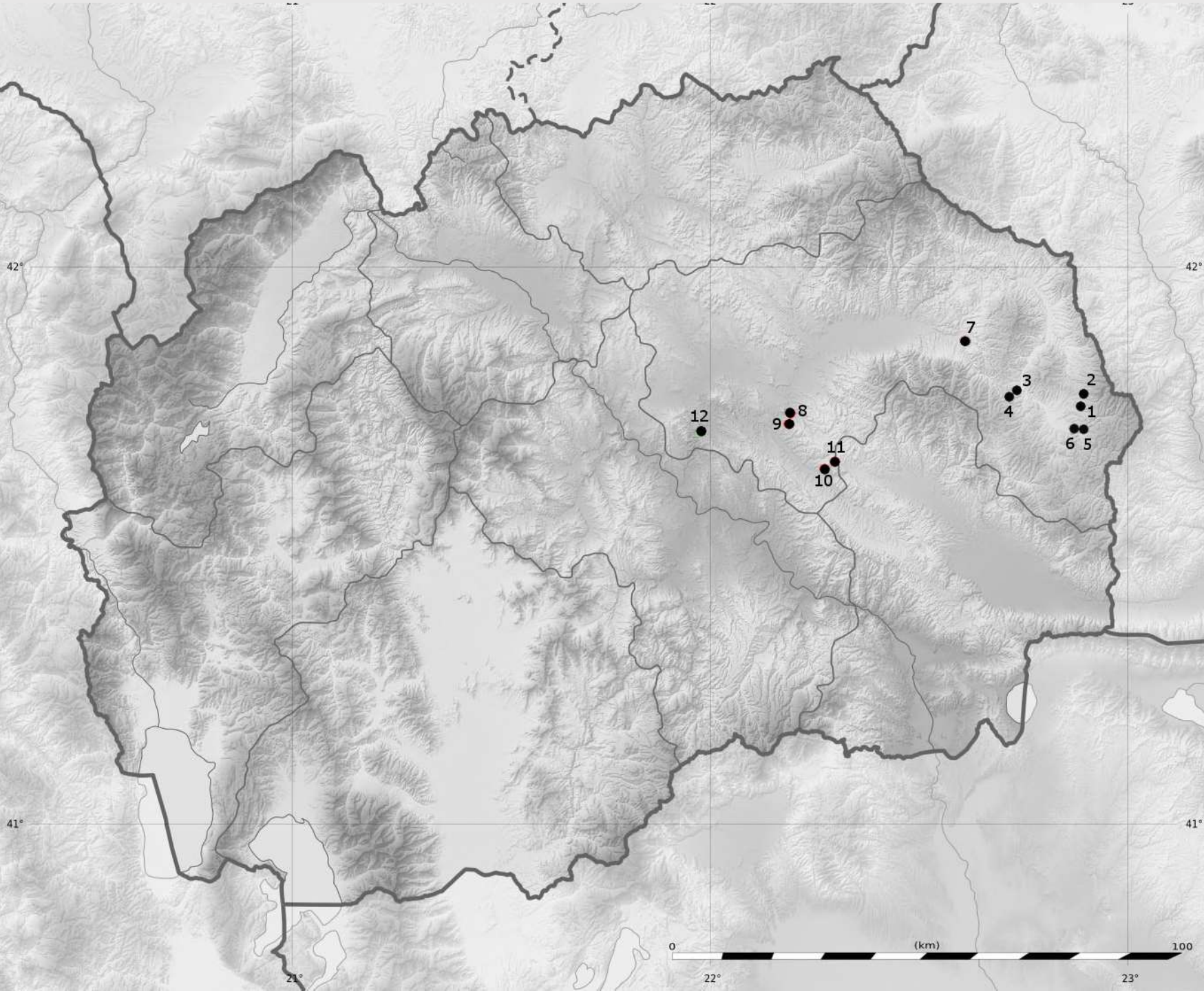
# Wine presses of Bargala



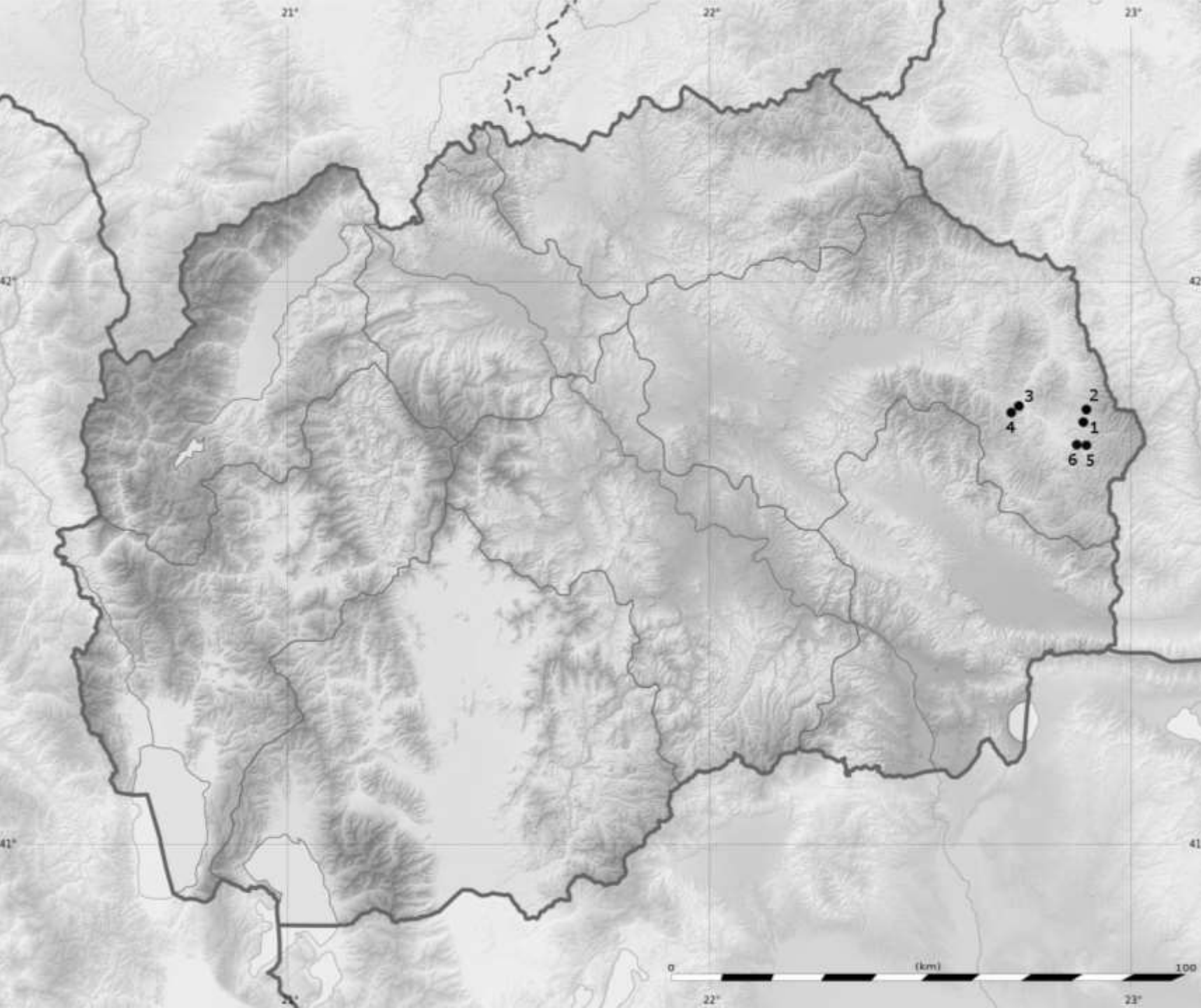


The room for  
storing wine





# Metallurgy in the Bregalnica valley



Metallurgy in the Upper  
Bregalnica valley  
(Maleševo):

1. Vo Reka
2. Rakovec
3. Žguri
4. Šumutnica
5. Gradište
6. Kovačilnica

# Archaeological site Vo Rekata, near Pehčevo

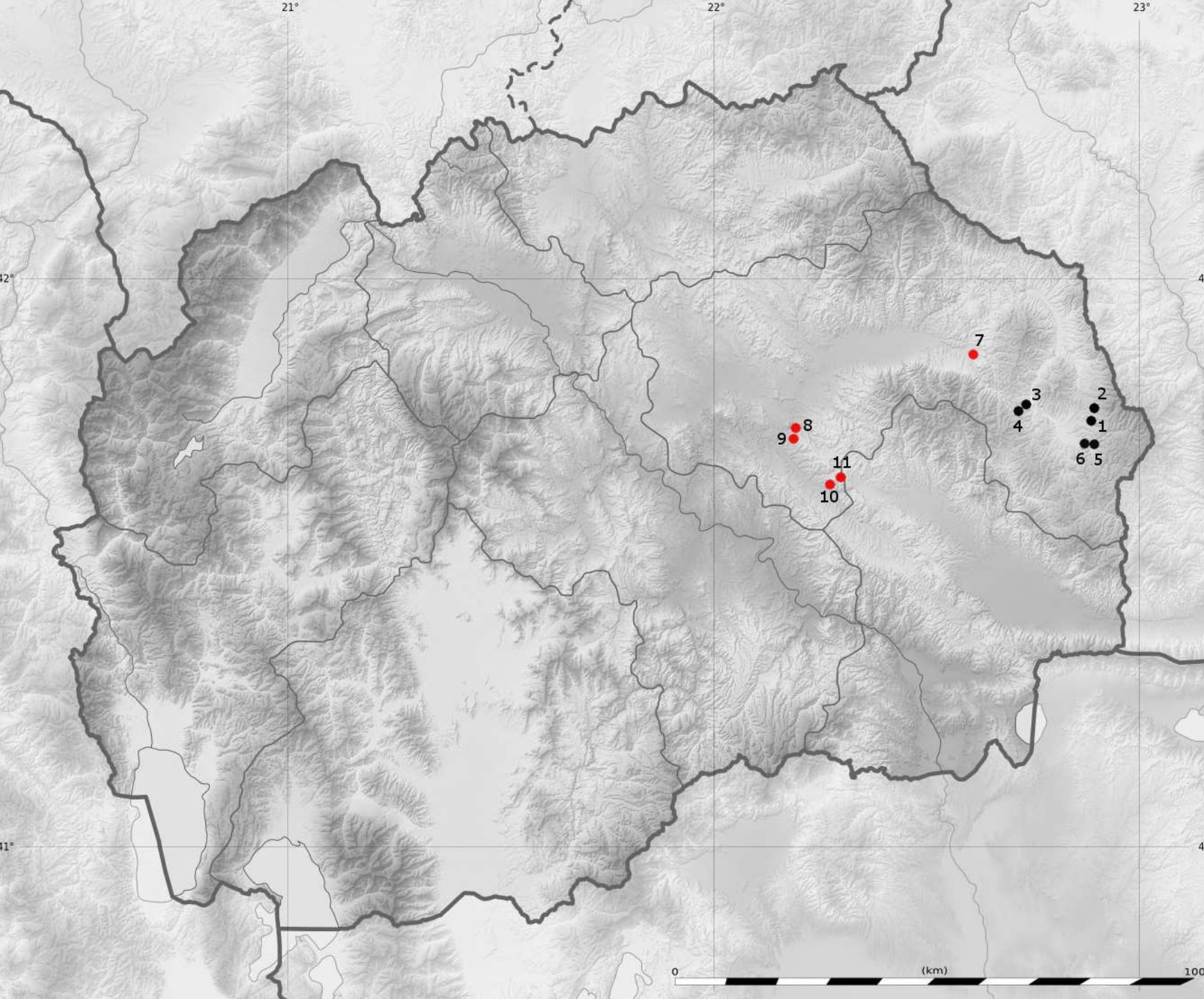




Archaeological site Gradište



Archaeological site Kovačilnica



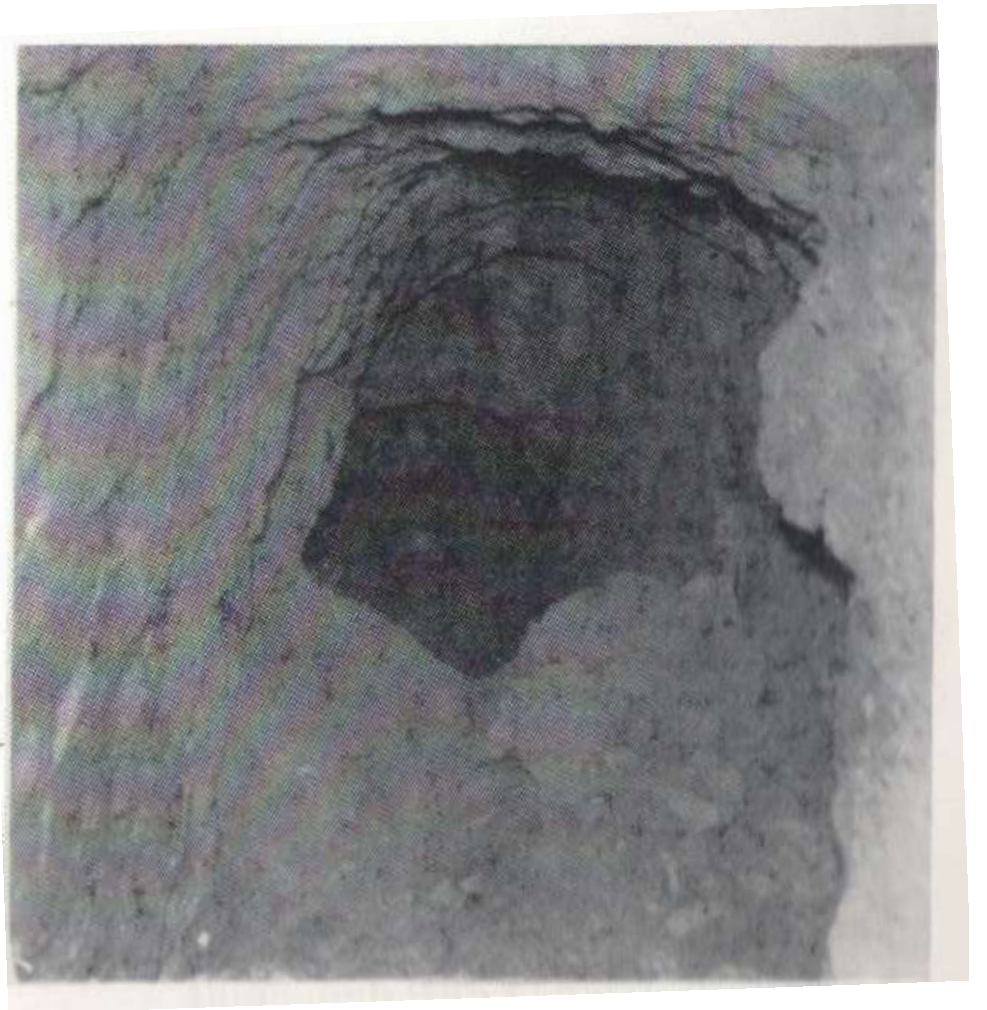
## Metalurgy in the Middle Bregalnica valley:

- 7. Pekljani
- 8. Shopping Centre, Štip
- 9. Klisura, Štip
- 10. Vrčva
- 11. Damjan

# Mining galleries from Central Bregalnica basin



Raška, Pekljani



Shopping Center, Štip

# Klisura site, near Štip



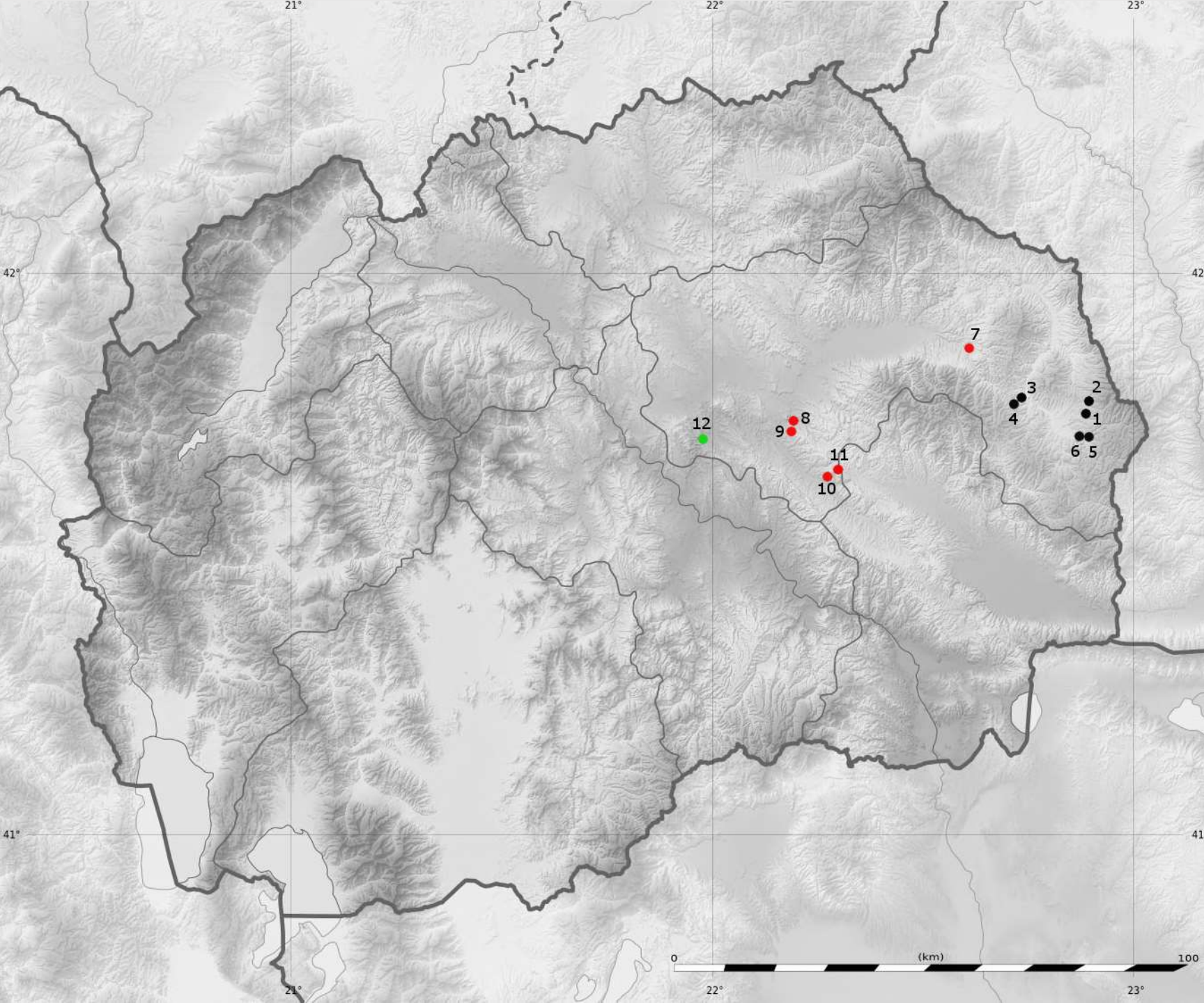




Structure with  
economic  
functions in  
Vrčva, near  
Brest

# Damjan, the modern day mine and ancient mining tools

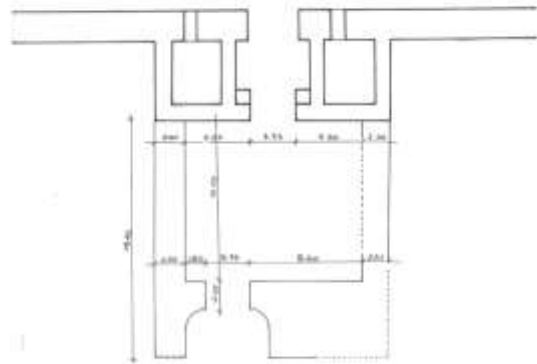


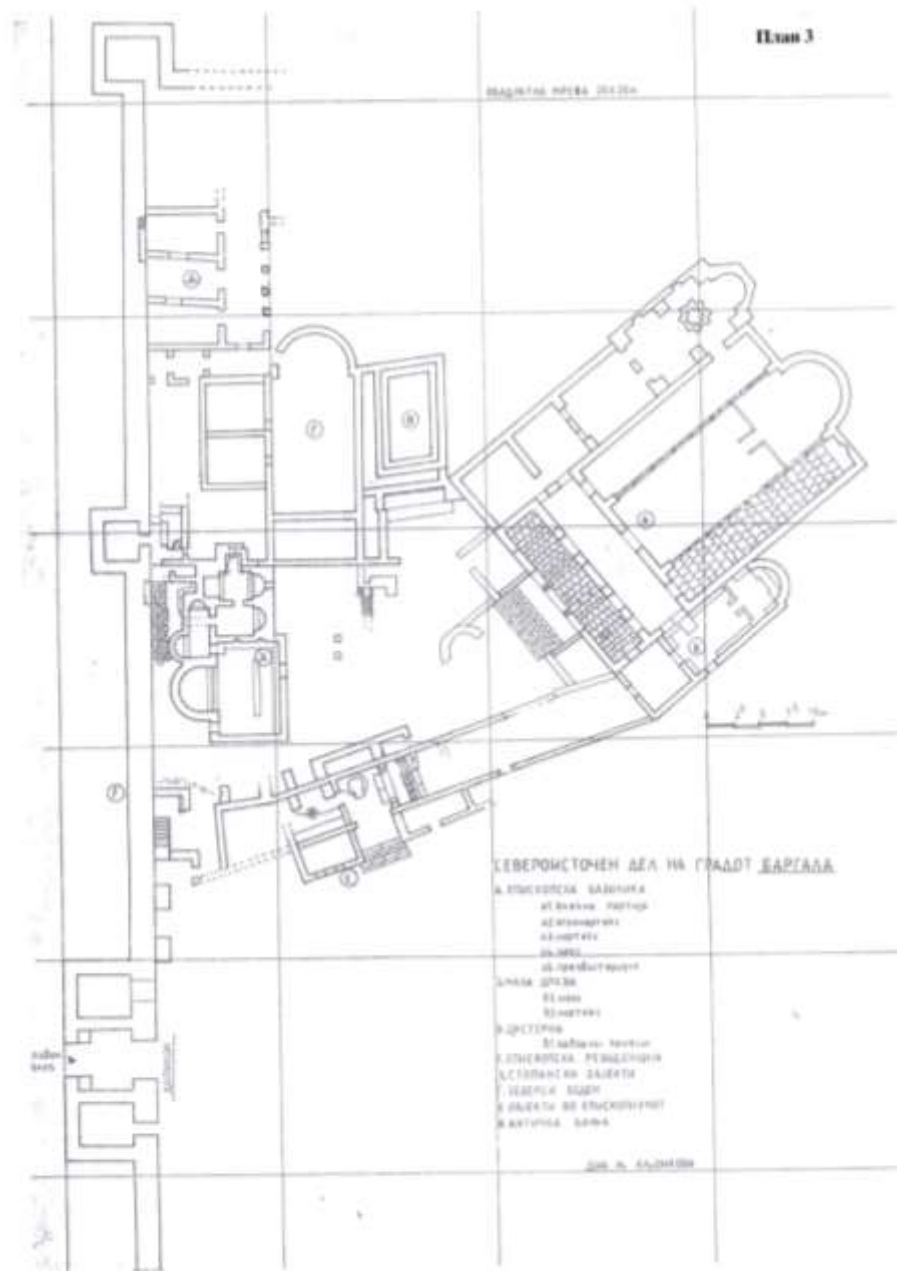


Metallurgy in the  
Lower Bregalnica  
valley:

12. Hisar-Crešče

# Porta Principalis





# The Episcopium of Bargala

# Wood-carving fragments from Bargala



# Wooden *pixidae* from Gajnov Dol, Konče



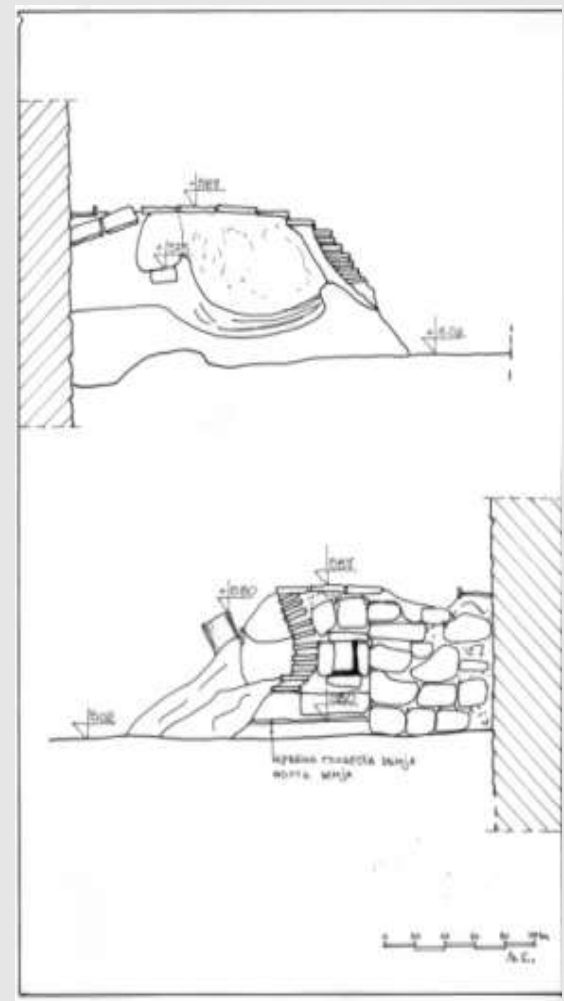
410



409



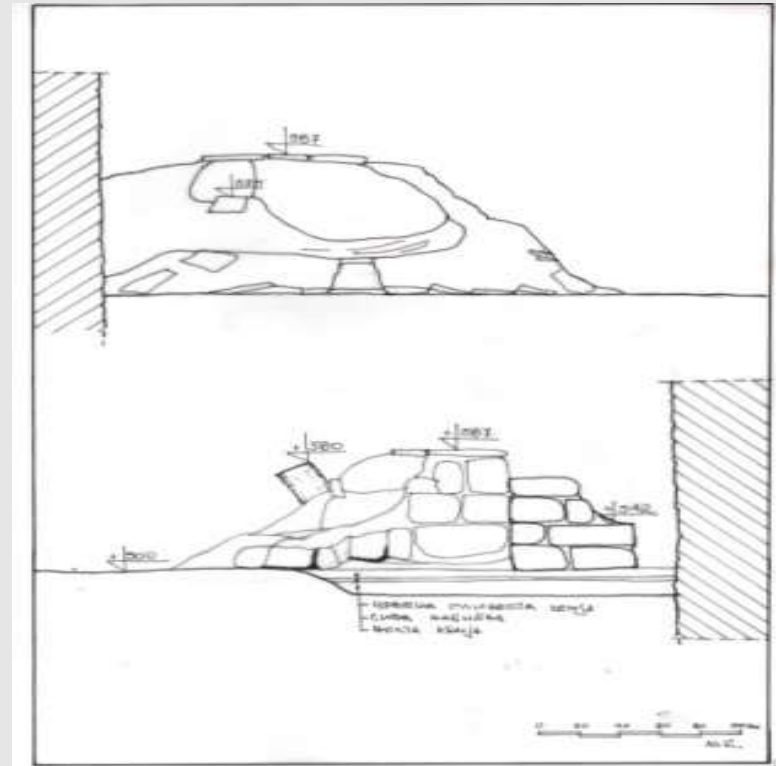
408



Glass kiln



# Structure of the glass kiln with the openings

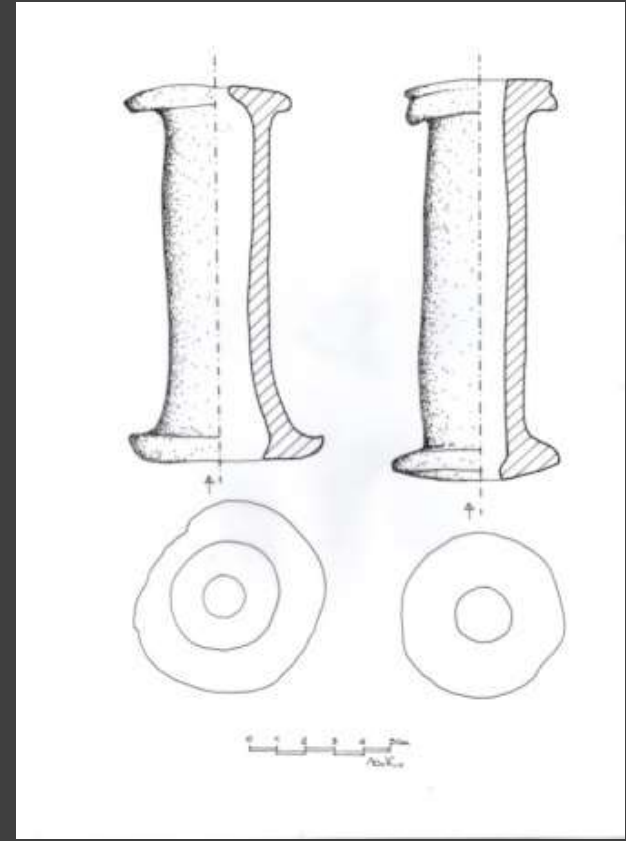


# Additional work areas around the kiln



# Glass fragments





Ceramic pipes (in situ)

Two metal  
pipes for glass  
blowing

---

