

# UNIQUE PET FACILITY IN SKOPJE - NEW PERSPECTIVE FOR THE HEALTH CARE OF THE PATIENTS IN THE BALKAN REGION

Emilija Janevik-Ivanovska<sup>1</sup>, Marina Zdraveska-Kocovska<sup>3</sup>, Maja Velickovska<sup>2</sup>, Meri Angeleska<sup>3</sup>, Katerina Kolevska<sup>1</sup>, Marija Atanasova<sup>1</sup>, Maja Jancovska<sup>1</sup>, Filip Jolevski<sup>1</sup>, Zlatko Filipovski<sup>1</sup>, Saso Nikolovski<sup>1</sup>, Nevenka Ristevska<sup>3</sup>, Trajce Szadov<sup>2</sup>, Zarko Spirkovski<sup>2</sup>, Emilija Belopeta<sup>2</sup>

<sup>1</sup>Faculty of Medical Sciences, Goce Delcev University Stip, Republic of Macedonia

<sup>2</sup>Project Unit for implementation of Positron Emission Tomography - PET Center Skopje in RM, Ministry of Health of the Republic of Macedonia

<sup>3</sup>Institute of Pathophysiology and Nuclear Medicine, Faculty of Medicine, University Ss Cyril and Methodius, Skopje, Republic of Macedonia

The University Institute for Positron Emission Tomography is under official establishment as a unique facility in the country and in the Balkan Region. The new facility is result of the Government investment and joint project with IAEA.

Idea 2005..... supported by IAEA..

Plan, URS..2012... expert from Ministry of Health, supported by IAEA experts for revision.

Start building October 2013....

September 2015



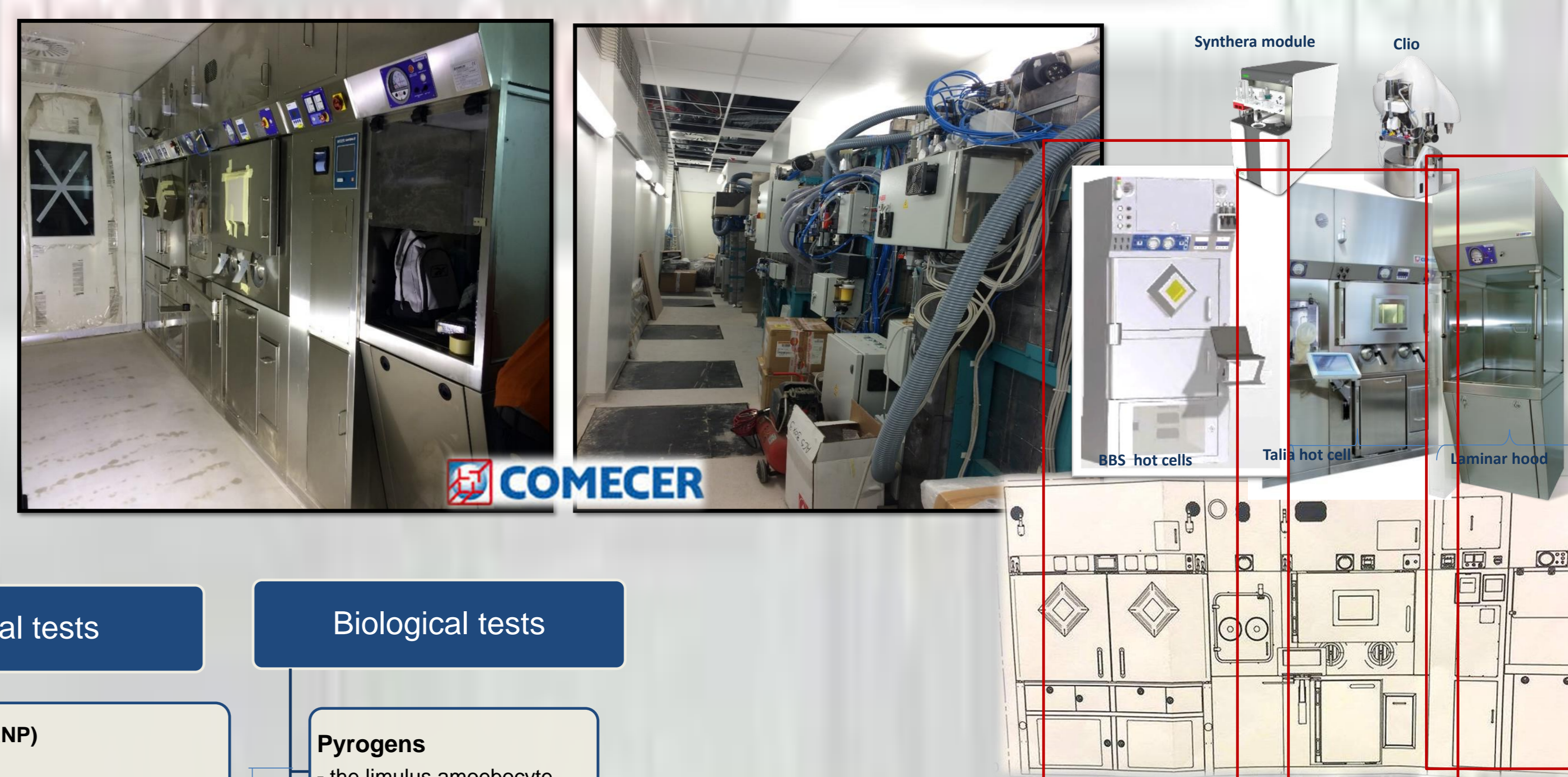
The new facility has a Department for Production and Department of Molecular Imaging connected together in the one unique system of Radiation Protection, QA, BMS, Informatics and technical and administrative support connected to the network of the unified Health Care System in the country.

Building includes:

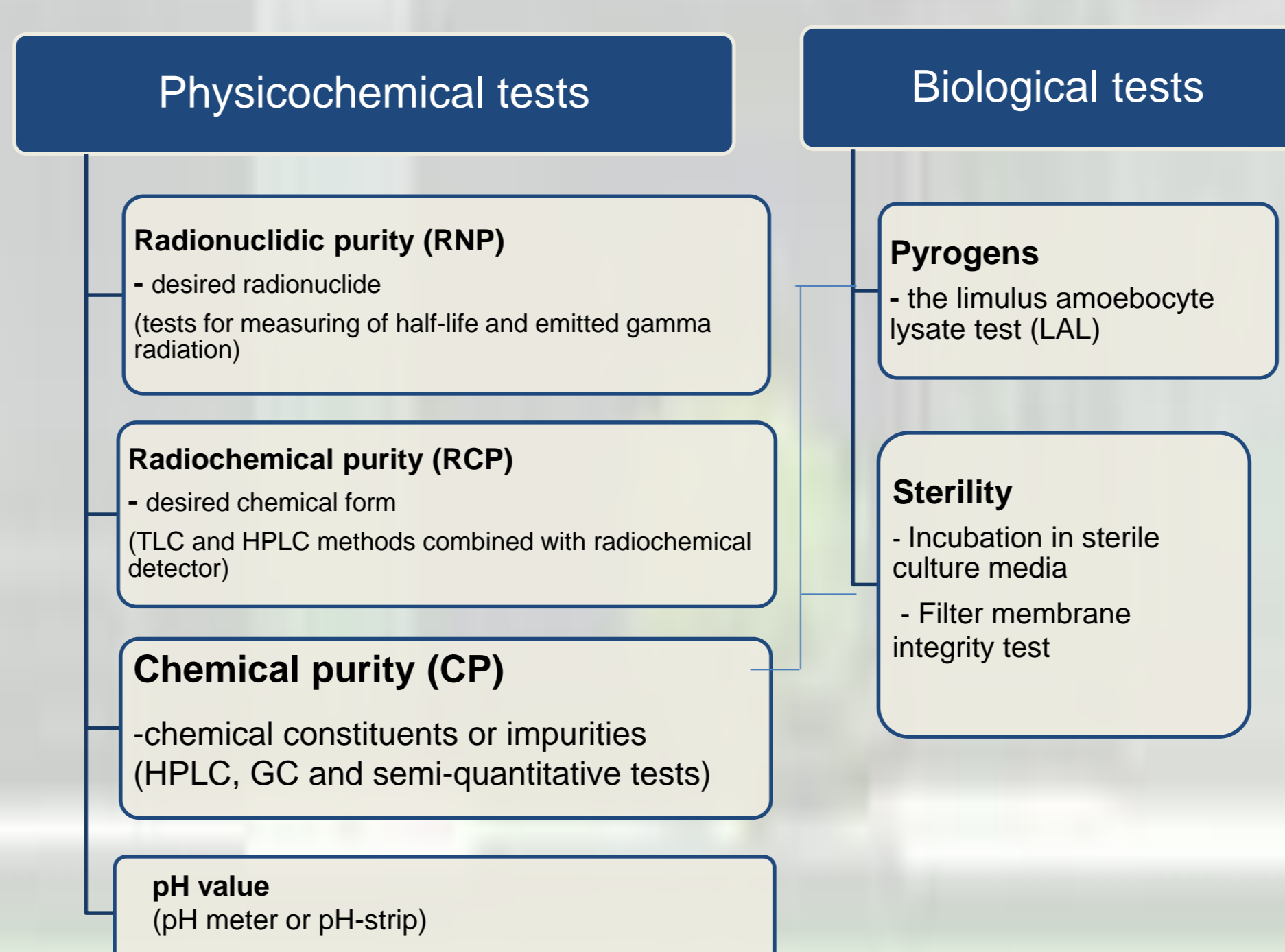
Cyclotron for production of ultra-short-lived isotopes (F-18, C-11, N-13 and option for solid targets),  
Cyclotron GE PETtrace 800



Two full GMP production laboratories for PET radiopharmaceuticals, one completely dedicated for FDG production and second includes production of other F-18, C-11, N-13, Ga-68 radiopharmaceuticals, and Cu-64 in the future. The third production laboratory that is part of the same GMP production site is dedicated for small scale production of therapeutical radiopharmaceuticals for clinical trials and investigation.



The integrated part are two QC laboratories and one research laboratory for preclinical investigation including toxicological studies of new radiopharmaceuticals.



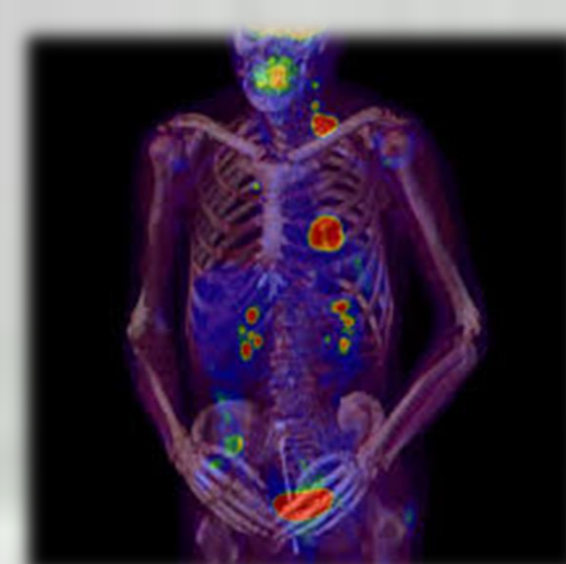
Licensing of the production site and all products



Law of drugs and medical devices 2015



Law for Protection against Ionizing Radiation and Radiation Safety (2002 / 2007 / 2011)



The Department of Molecular Imaging is located in the second floor with two PET/CT cameras dedicated for clinical investigation and advanced biomedical imaging in humans using extensive suite of state-of-the-art internally produced radiopharmaceuticals as imaging tools. PET in that condition may serve as a magnet for recruitment in many areas and promote national and international interdisciplinary cooperation, to provide university educational opportunities for master, doctoral and postdoctoral studies, specialties in nuclear medicine, radiopharmacy and medical physics with distinctive strength in education and research and an entrepreneurial dimension.

**Conclusion: The University Institute for Positron Emission Tomography in Skopje serves both as a model for future and more widespread use of PET. Unique capabilities of PET may facilitate grant opportunities.**

International Atomic Energy Agency - International Conference on Clinical PET-CT and Molecular Imaging (IPET 2015 ) Vienna 5-9 October 2015