

Grncharica

The misfit in the Balkan Neolithic?

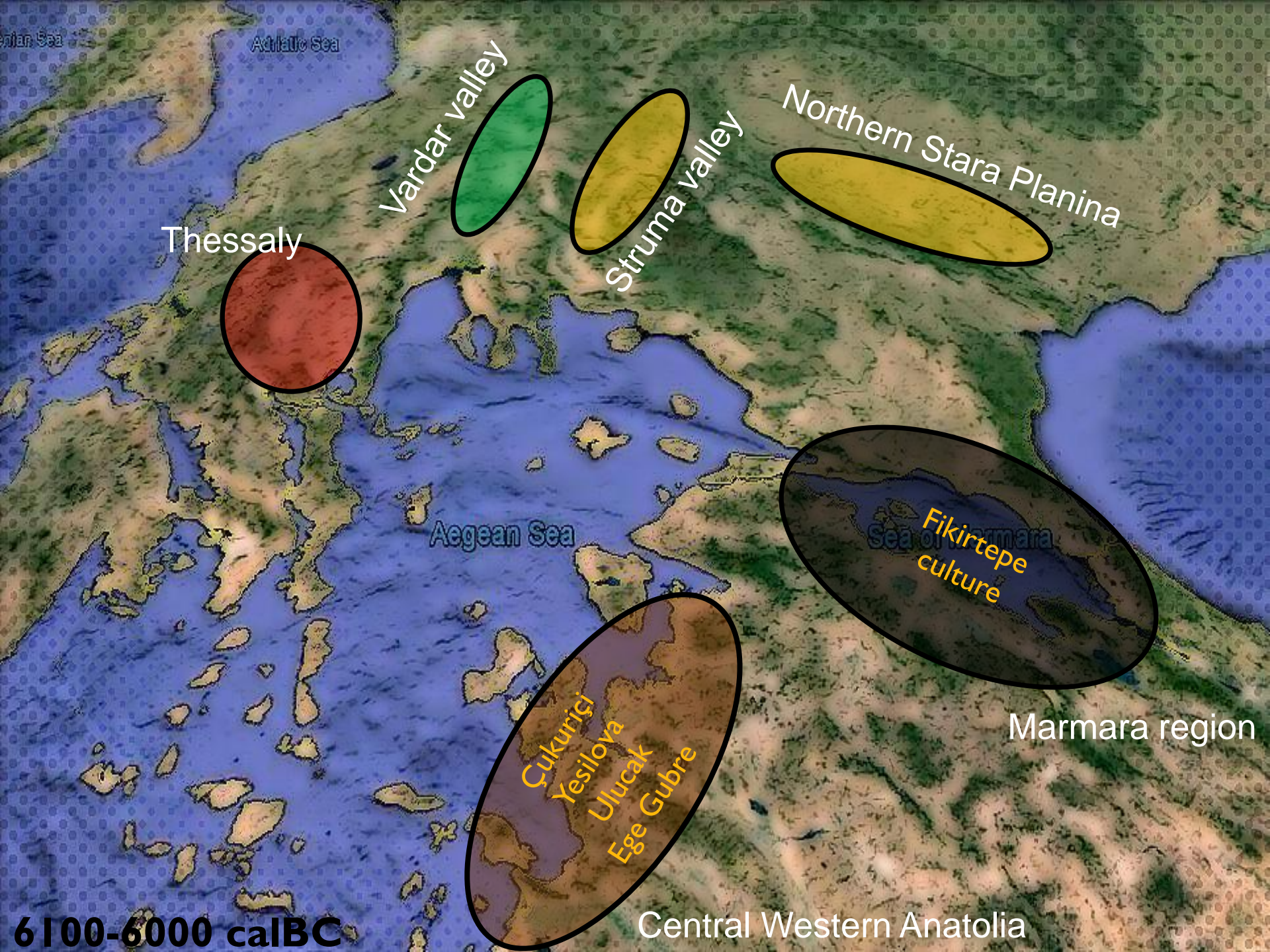
Pottery typology and the monochrome
Neolithic phase in Macedonia



UNIVERSITY
OF FERRARA
- EX LABORE FRUCTUS -



Darko Stojanovski
Trajce Nacev
UGD, Shtip, Macedonia
Carlo Peretto
UNIFE, Italy



Thessaly

Vardar valley

Struma valley

Northern Stara Planina

Aegean Sea

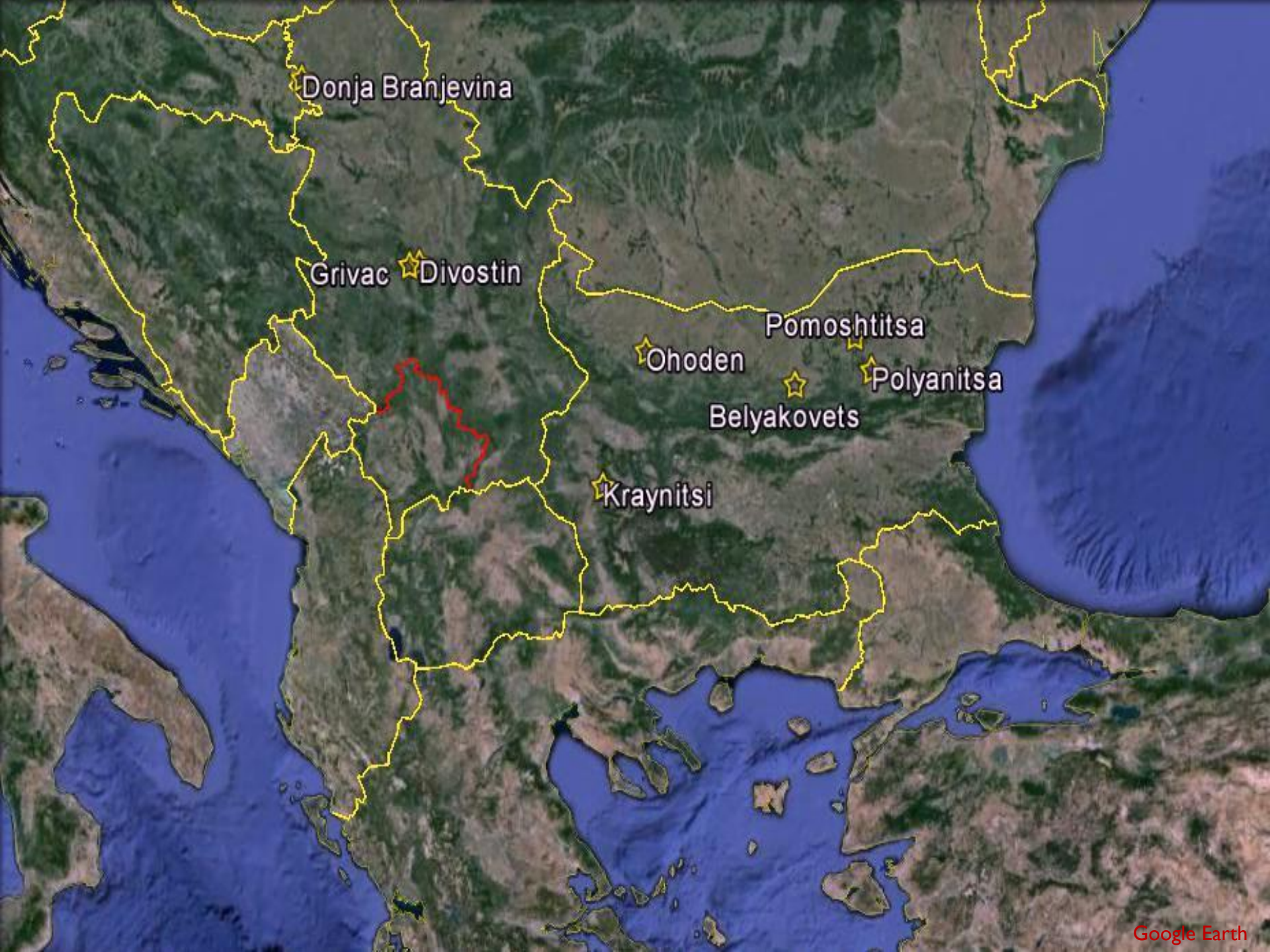
Fikirtepe culture

Marmara region

Çukuriçi
Yesilova
Uluçak
Ege Gubre

Central Western Anatolia

6100-6000 calBC



Donja Branjevina

Grivac ★ Divostin

★ Ohoden

Pomoshtitsa

★ Polyanitsa

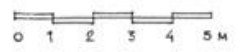
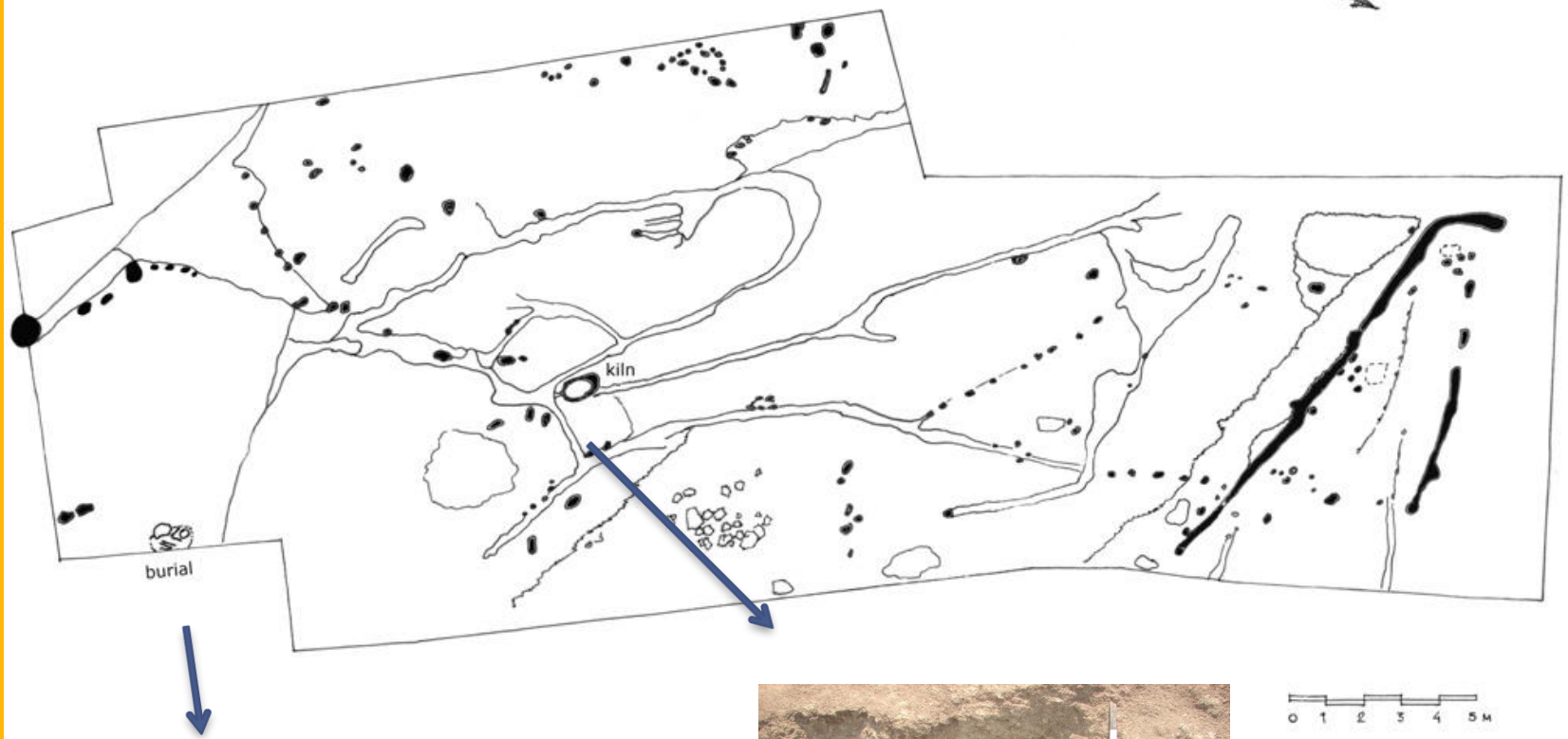
★ Belyakovets

★ Kraynitsi



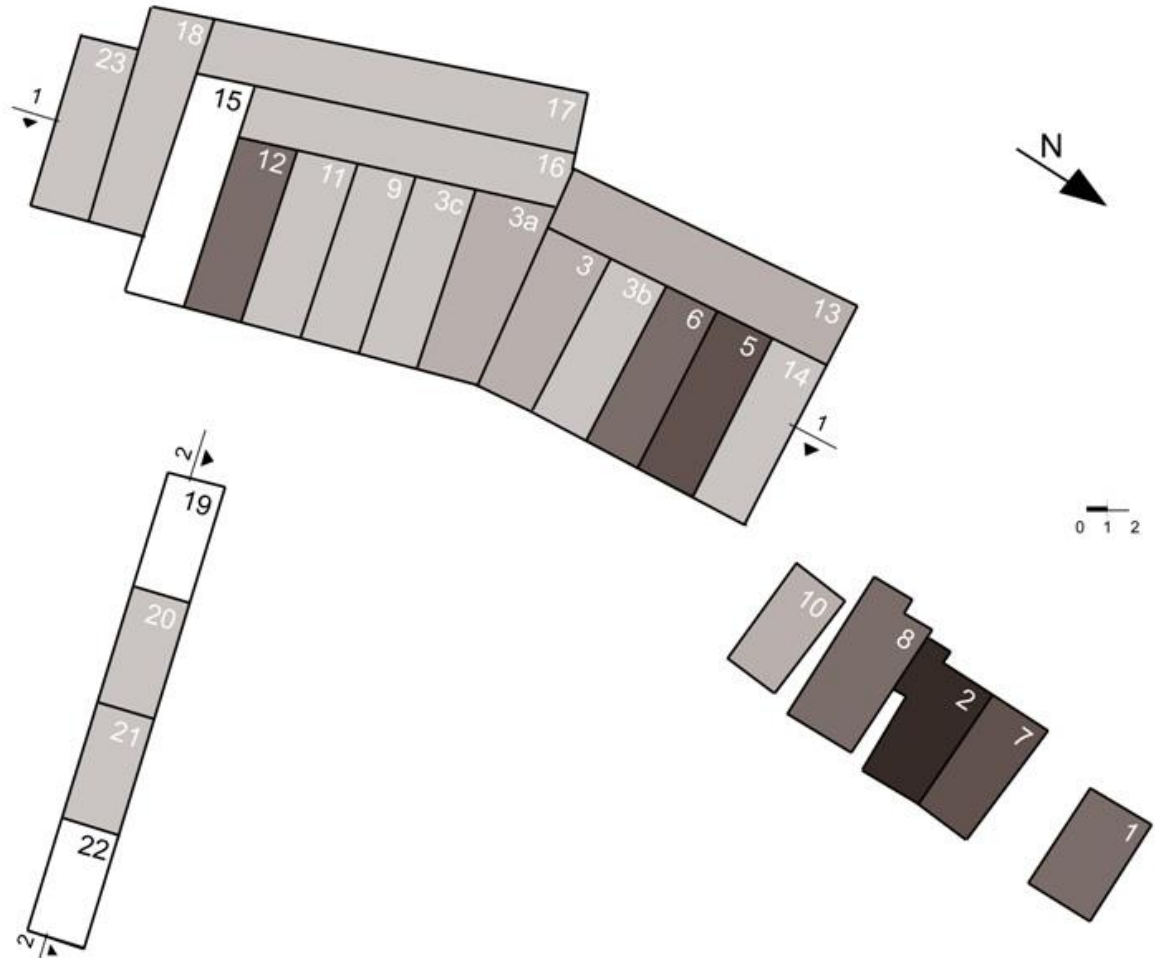


Panoramic view of the settlement



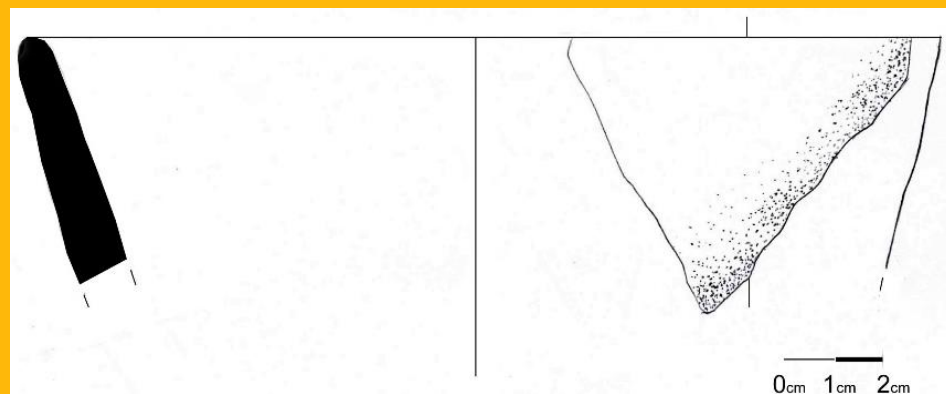
4

GRNCHARICA

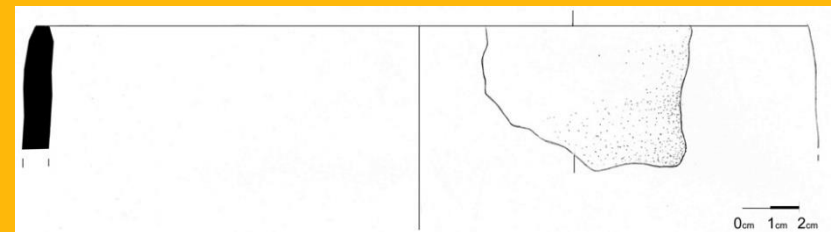
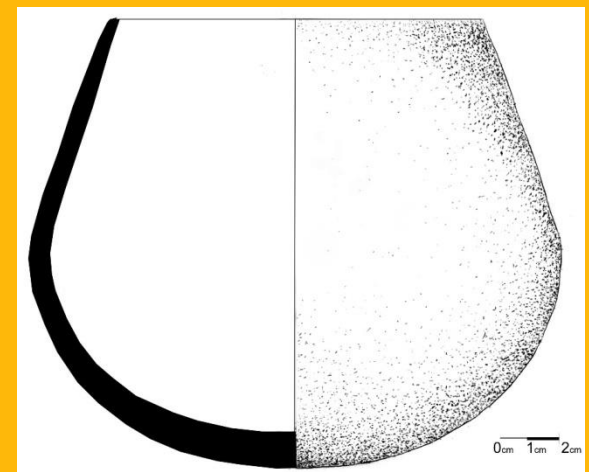


Excavated area and pottery density by trench

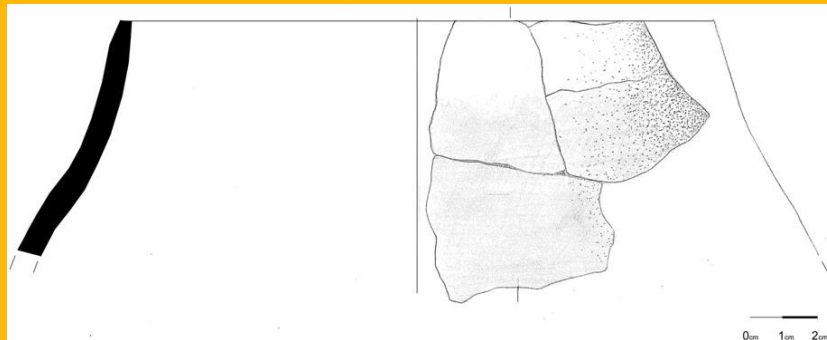
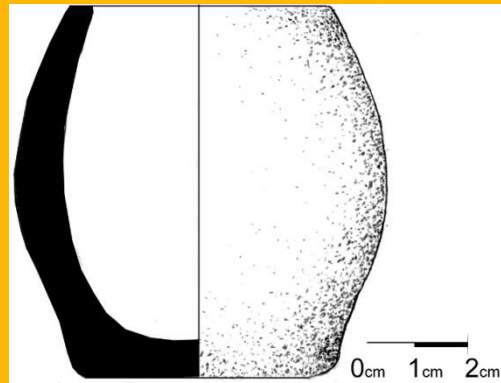
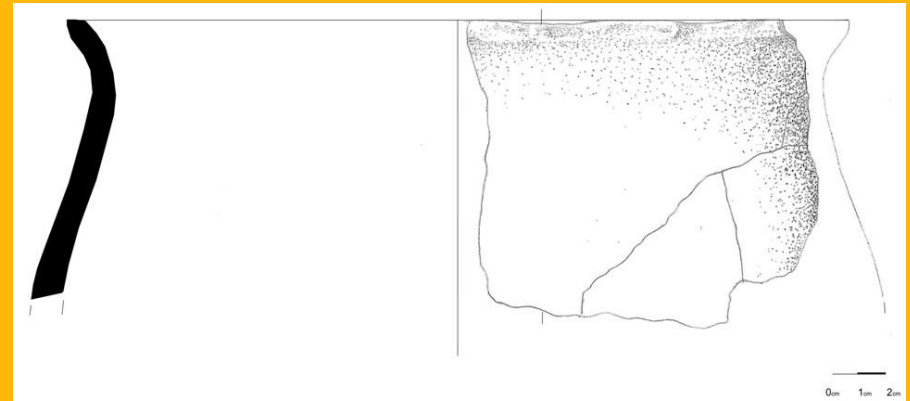
Plates	47,6 %
Bowls	24,3 %
Jars	25,9 %
Lids	0,3 %
Flatbases	0,9 %



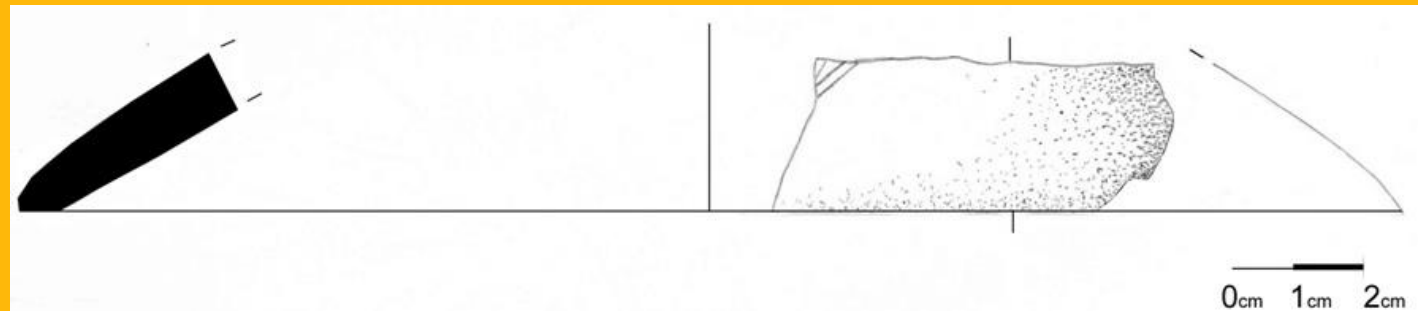
Plates	47,6 %
Bowls	24,3 %
Jars	25,9 %
Lids	0,3 %
Flatbases	0,9 %



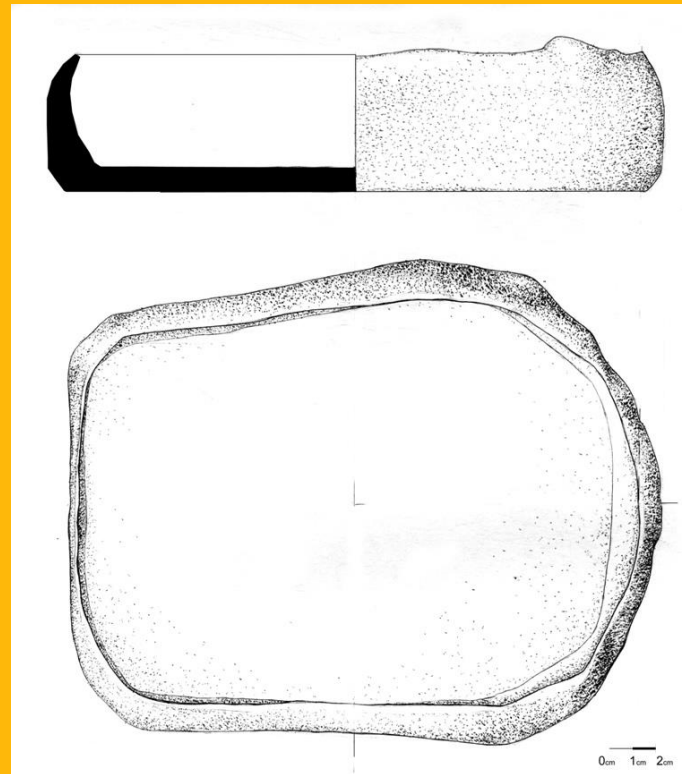
Plates	47,6 %
Bowls	24,3 %
Jars	25,9 %
Lids	0,3 %
Flatbases	0,9 %



Plates	47,6 %
Bowls	24,3 %
Jars	25,9 %
Lids	0,3 %
Flatbases	0,9 %



Plates	47,6 %
Bowls	24,3 %
Jars	25,9 %
Lids	0,3 %
Flatbases	0,9 %



D
e
c
o
r
a
t
i
o
n

50% slipped
15% decorated

-Impression

-Barbotine

-Relief application

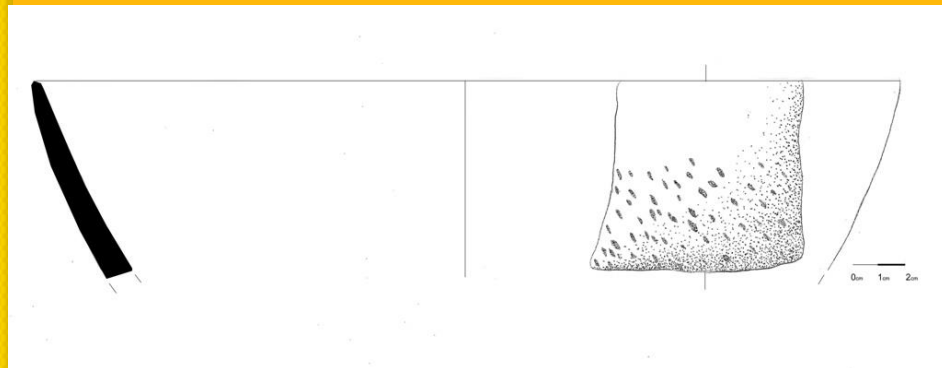
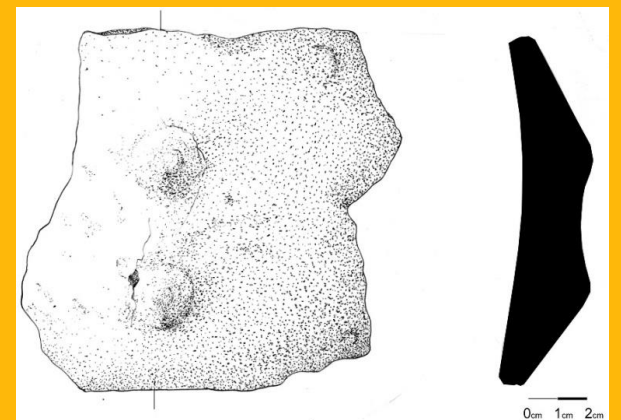
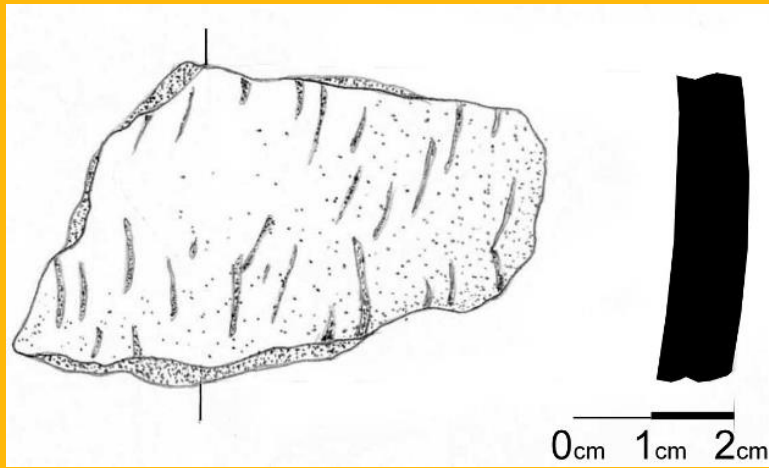
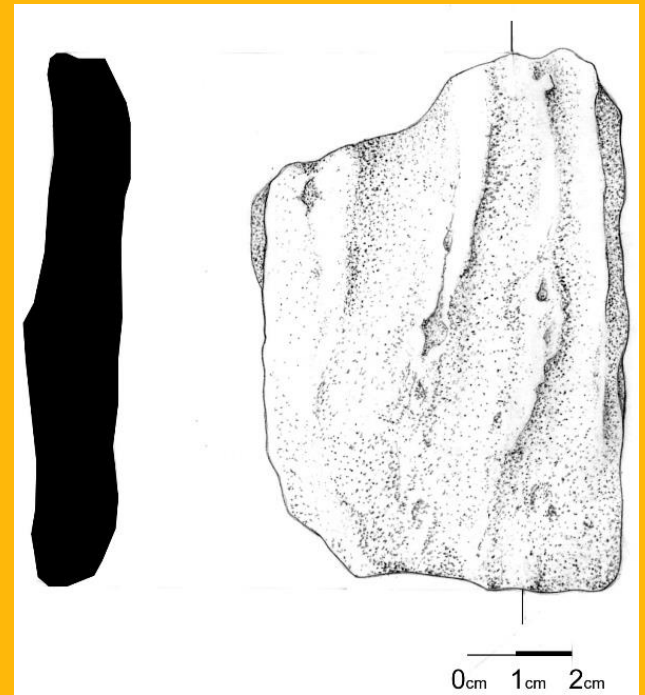
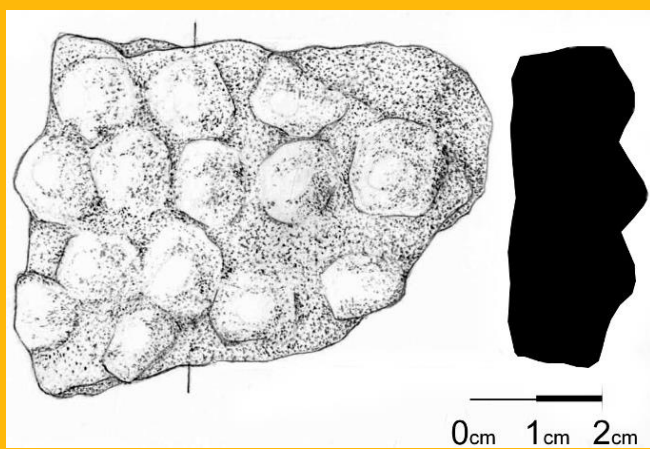
-Incision

-Stabbing

-Paint

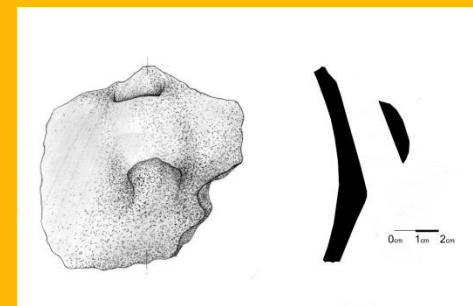
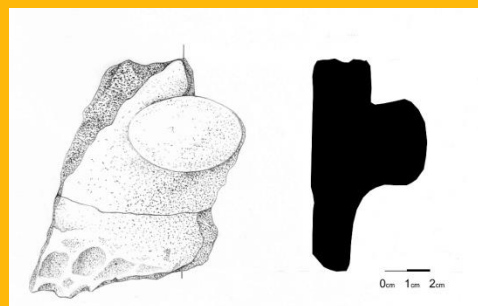
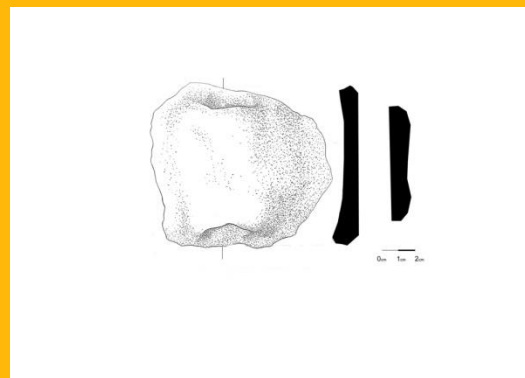
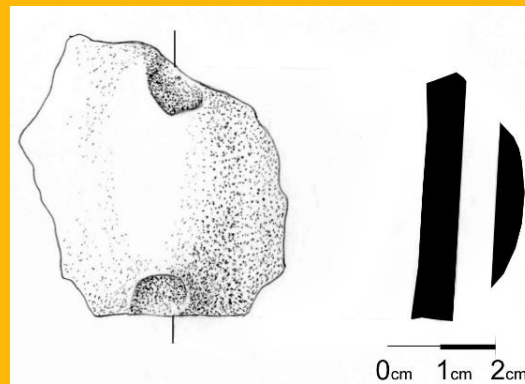
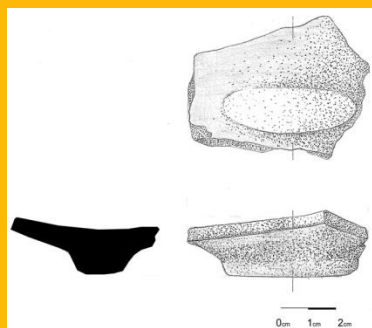
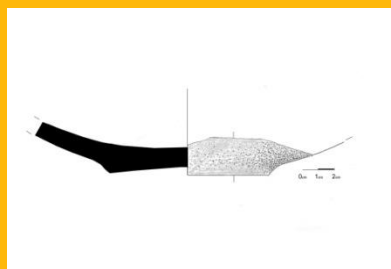
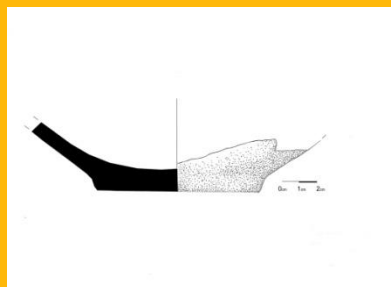
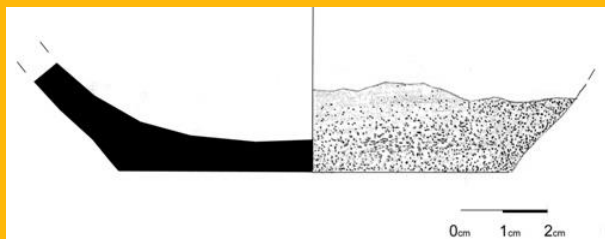


D
e
c
o
r
a
t
i
o
n



Drawings: S. Petrovska

Base/handles

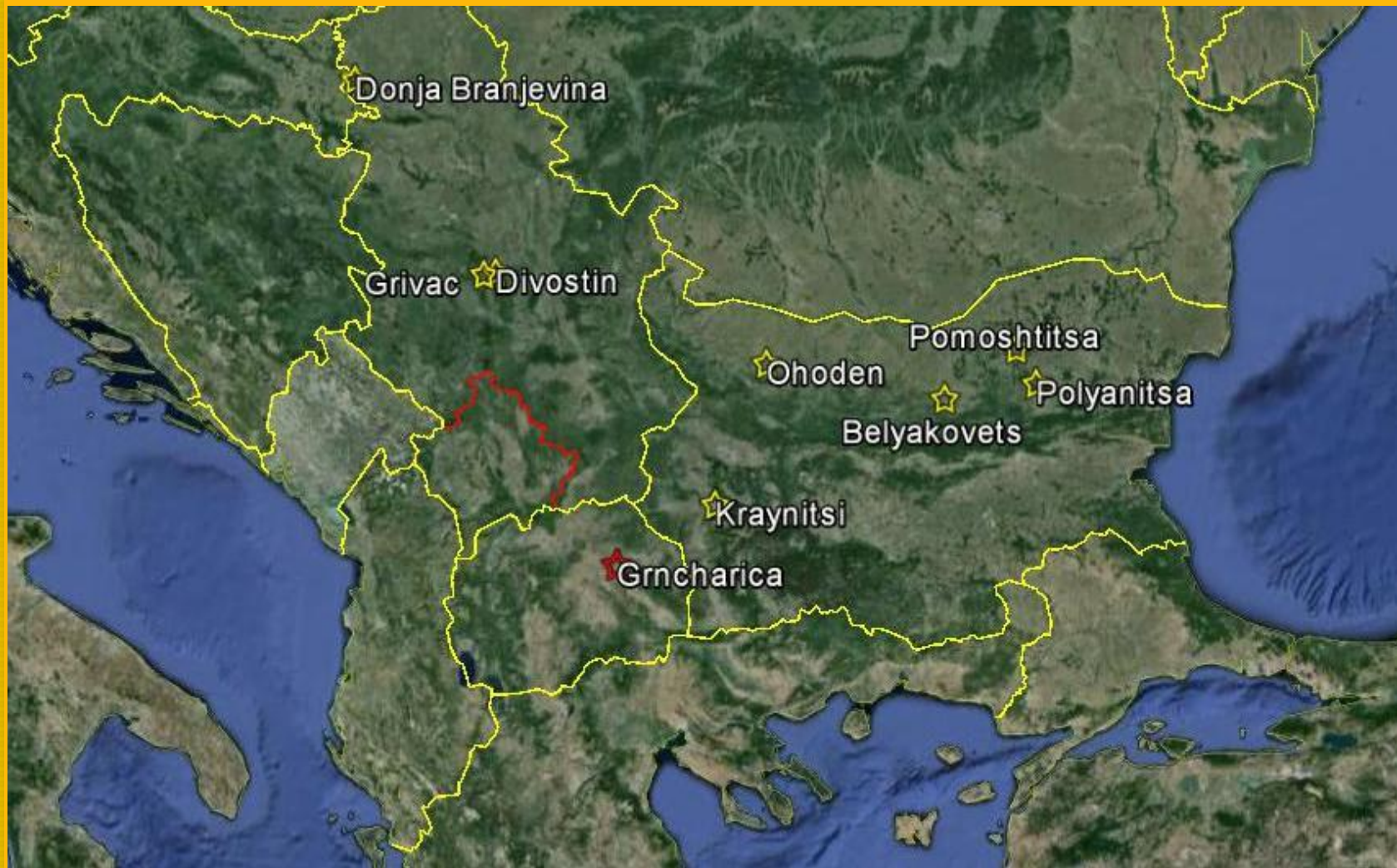


Drawings: S. Petrovska



- Lack of white-painted pottery
- Low variety of simple shapes
- ‘Primitive’ appearance of the pottery
- Abundance of mineral and especially organic temper in the clay
- Abundance of red-slipped pottery
- Impressed decoration, barbotine and relief applications
- Low firing temperature
- Flat settlements in the periphery of a valley
- Mesolithic traits in the lithic industry





The sites attributed to the “monochrome” phase of the temperate Balkan

Pre – 6100 calBC

SAMPLE/MATERIAL	RADIOCARBON AGE	CALIBRATION RANGE	LABORATORY
SUERC- 22529/HUMAN BONE	6745 ± 35	5700BC (0.8%) 5695 BC 5675BC (67.4%) 5625 BC 5720BC (95.4%) 5610 BC	SUERC- 22529 (GU- 18167)
LTL8510A/HUMAN MOLAR	6555 ± 40	5540BC (68.2%) 5470 BC 5620BC (8.3%) 5580 BC 5570BC (87.1%) 5470BC	CEDAD: 2012_0016



Photo: K. Spasov

Neolithic chronology in
Macedonia (after Gimbutas):

- Early: 6100-5800 BC
- Middle: 5800-5300 BC
- Late: 5200-5000 BC

“The great geographical distance between the individual sites is still the biggest problem for the determination of a single cultural group in the period before Karanovo I or classical Starchevo culture” - Raiko Kraus

It seems that the general picture of the [Neolithic] culture[s] is exactly that – general picture of a region with prevailing common cultural features, but region in which individual small communities also tend to maintain their cultural differences.