

**Modern style furniture and glass as part of the everyday interior**  
doc.d-r Vaska Sandeva\*, doc.d-r Katerina Despot\*, Alexander Ignatov,  
Verica Kukusheva

\* University "Goce Delchev" - Stip, Macedonia

**Abstract**

Modern style as part of everyday interior despite specific, quality equipment, widely understood perception, impression that should be raised. In today's urban living available in a variety of contemporary styles, colors and geometric shapes, shapes that are chosen to fit the geometry of the interior load bearing. The effect of fluidity in space additionally increase parts glass furniture.

The visual identity refers to what the interior is one of the biggest pieces of furniture to the smallest detail. Commercial interiors decorated in contemporary style tasked sense of balance and a pleasant atmosphere to bring in their environments, how would people felt comfortable and relaxed as can be found in their homes (houses). On the other hand, the task of residential interiors to provide maximum quality of life, and spending time in them to be the sign of enjoyment and pleasure.

**Keywords:** style, design trends, room, interior, furniture, glass, paint

Modern style furniture is characterized by simplicity, practicality and flat lines. The modern approach is focused primarily on function and avoids the excessive ornamentation, which is evident in many other styles, this style brings a sense of refinement and purity. Basic colors of this style are black, white, gray and other neutral tones that come to the fore when with them as accent will appear a bright and pure color or contrast for example.

Painting on the wall in a bright color that is opposite wall is a neutral color. The use of new technologies in lighting, ambiance can change colors and thus you get pleasant atmosphere in the space. Open spaces, possibly partitioned with sliding doors and walls are ideally created for this stil. Za greater authenticity need to use furniture with geometric shapes and avoid furniture that features curved feet and details out because of the authenticity of contemporary style.





Figure 1: Interior arranged in a modern style

Glass as a material has many advantages and it is desirable in arranging interiors. The applied design solutions with materials of glass show that it is an integral element in the creations of modern furniture and interior overall, because the effects are created in space can not be obtained by any other type of material.

Various finishes of glass manufacturing technology this fragile and sensitive material transform into solid, reliable, with many enhanced aesthetic and qualitative characteristics that are desired by designers and users of this type of furniture.

The glass market is available in various finishes and colors, and what glass is used in a room depends on the desired design effects and spatial possibilities. The processing of the glass can be heat or surface as a result of these treatments on the market offers as usual, tempered, sanitary, pekkareno, laminated, security, ground, glass ornament. Then glass footprint is various artistic glass that stand out particularly original design and color.



Figure 2: Komodo art of glass processing in living room

Regardless of the trends prevailing in world markets, the glass has always been present in the design of certain elements of furniture, the glass is given such great importance that certain parts of glass furniture becomes imperative to create a modern, trendy interior experience. Proper selection of glass items of furniture means meeting the functional role and increase the aesthetic value of the area.

The kitchen glass can be used in various forms and purposes, as a substitute of ceramic wall tiles iznad job boards elementi the kitchen, ideal for small dining across the kitchen to set the glass table, then the glass table will not close overload and space. The effect of fluidity in additional space may increase and glass chairs. The use of glass dining table, desk, sideboard or glass shelves will rationalize line of sight and will achieve the desired effects of increased space.



Figure 3: Kitchen Glass

Dual nature of glass furniture is tasked to emphasize the space with all its transparency and highlights their specific design features of bending and shaping the interesting shapes of furniture, glass since it ideal for use in large and small spaces. Glass forms of furniture left specific effects in combination with Lighting fixtures ie their use spatial relationships can additionally be highlighted.

The use of glass elements are especially peporachuva in smaller apartments which wants to highlight the brightness and increase the space. Although glass furniture small spaces as need arises and is one of the most favorable solutions for optical magnification, selection of glass in the spacious apartments and houses reflects a desire to emphasize the esetetskite values of quality and contemporary design.

The glass is always special in their expressions for the degree of transparency, ie light that inevitably misses regardless of whether it is transparent, blurry, color and so on. Actually the relationship with natural and artificial light, ie daily nocturnal experiences that creates unique glass make in shaping the furniture and interior effect as the reason for its selection as part of interior design.

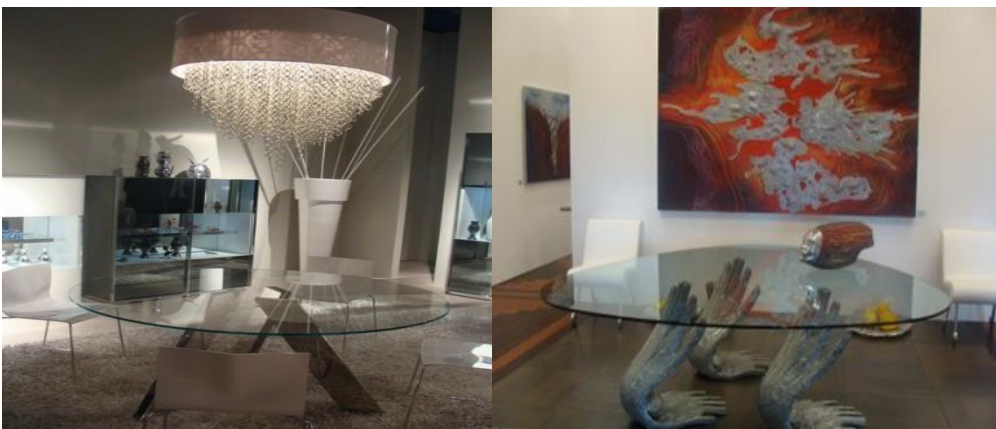


Figure 4: Glass pieces of furniture in combination with lighting

No matter how strong a glass, the glass parts of furniture should strive to be asked of frequency positions in functional areas, particularly parts of the communication are daily exposed to shocks from items that are imported or exported from residential premises. Glass sideboards perfectly adorn the living room or dining room by giving visual emphasis on highlighting the position and focus of its location.



Figure 5: Glass parts furniture

Translucent glass shelves is not recommended to be placed at a height of less than 1m. because such positions because transparency is not sufficiently visible. Unintended impacts by an individual may result in such cases the damage to the glass and injuries. All edges of the glass elements recommended to be final honed smooth and rounded as to avoid possible injuries.

The working part across the living room is the ideal glass computer table with glass plate giving emphasis to what is above it and below it.



Figure 6: Glass furniture for study room

Glass tables are always made of safety glass that submits a large burden and possible impacts without visible damage. Glass tables in combination with other materials such as base-wood, metal, stone and so on. can be very effective and dominate the space, while not visually burden.



Figure 7: Glass tables in combination with other materials

The bedrooms can be set glass panels behind the bed, bedside tables or glass that will become neutral elements bedside and as such correspond to different models of beds. Especially good visual impression leaves the glass sliding door wardrobe in the bedroom and wardrobe inside the wardrobe becomes a detail.



Figure 8: Glass parts of furniture for bedroom

Decorative glass tiles can be used to partition the space and covering the walls in the living room or bedroom. Ideal for small apartments or areas where there is less natural light from the glass partitions between rooms or inside the room which increases the aesthetic value of the apartment.



Figure 9: Glass panels for partition walls

Effect hoverings and optical illusions in space is experienced with glass partitions, floors and stairs.



Figure 10: Glass floors and stairs

The transparent glass bathroom shower compartment of visual space increases as a special accent detail can be glass sink.

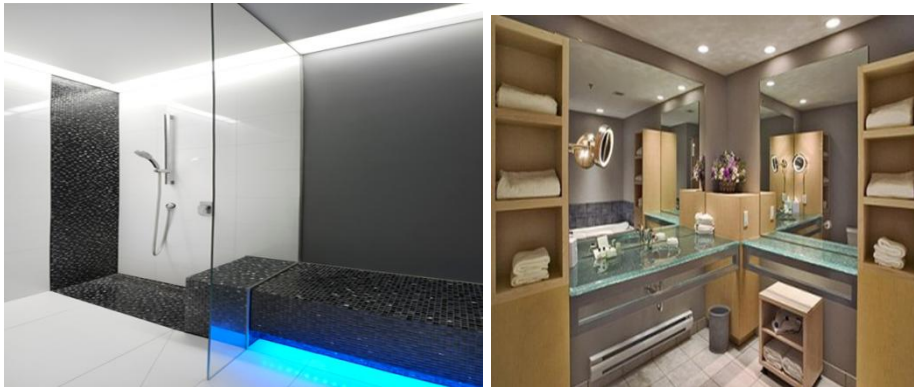


Figure 11: Bathrooms glass

Special visual effect is increased by placing the glass radiators for central heating which can be clad with quality high resolution images.



Figure 12: Glass radiators

## Conclusion

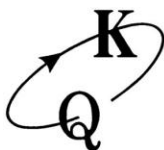
The style of contemporary interiors, besides the actual, quality equipment, widely understood perception, impression which should cause constant application of various types of materials.

Glass as a material for making furniture would be constantly present in the trendy equipping functional zones. It brings the challenge of introducing full computerization, electronics and automation in the furniture used in homes and business premises.

Use of multi sensory materials, materials sensitive when touched, resistant to impact, abrasion, pressure, multi sensory colors in different lighting effects and fibers combined with glass to give a new impression and setting the walls, furniture, various objects and full interior apartments.

## Literature

1. Materials in Architecture - prof. Dr. Ana Rradivojevic
2. Building glass –mr. sc.Ira Rechner Šuštar
3. The mechanisms of degradation and protection of stone and glass-  
prof.dr.Dubravka Bjegovic
4. Building materials-prof.dr.Boris Krstev
5. Glass in Architecture – prof.dr. Zoran Versic
6. Large movements of modern masters (first book) - prof. dr. Michael Tokarev



## СЪЮЗ НА СПЕЦИАЛИСТИТЕ ПО КАЧЕСТВОТО В БЪЛГАРИЯ /ССКБ/

### UNION OF QUALITY EXPERTS IN BULGARIA

София – 1000, ул. Г. С. Раковски № 108, офис 601, тел./факс: 02 / 988-40-75; e-mail: sskb.bg@abv.bg

Изх. № 83 / 23.10.2013 г.

#### СЛУЖЕБНА БЕЛЕЖКА

Настоящата служебна бележка се издава на доц. д-р Васка Сандева от катедра "Архитектура и дизайн" на Университет "Гоце Делчев" - Щип, Р. Македония, в уверение на това, че същата е участвала с доклади на тема:

1. Decorative design in contemporary interior inspired by the carpets of the 19th century in Ohrid – doc. d-r Katerina Despot, **doc. d-r Vaska Sandeva**, doc. d-r Petar Namicev, Slave Arsov
2. Radiator as a sculptural form in the bathroom (Inspiration for creating and developing the heating element in the bathroom is a form of plant origin - Dandelion) – doc. d-r Katerina Despot, **doc. d-r Vaska Sandeva**, doc. d-r Petar Namicev, Sanja Taukova
3. Application of symmetry in the traditional architecture of the 19th and early 20th century in Macedonia – doc. d-r Petar Namicev, **doc. d-r Vaska Sandeva**, doc. d-r Katerina Despot
4. Space – interior and exterior – **doc. d-r Vaska Sandeva**, doc. d-r Katerina Despot, doc. d-r Petar Namicev
5. Old ohrid features - inspiration for contemporary exterior – **doc. d-r Vaska Sandeva**, doc. d-r Katerina Despot, Kaliopi Bosilanova
6. Modern style furniture and glass as part of the everyday interior – **doc. d-r Vaska Sandeva**, doc. d-r Katerina Despot, Alexander Ignatov, Verica Kukusheva

в XXII Международна научна конференция за млади учени „Мениджмънт и качество“ от 17 до 19 октомври 2013 г. в Учебно-опитна база на ЛТУ – Юндола, България и е заплатила такса от 72 лева /седемдесет и два лева/ в брой.

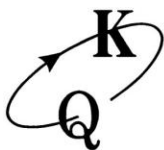
Настоящата служебна бележка да послужи при необходимост.

Председател на ССКБ:



проф. д-р Георги Тасев





# СЪЮЗ НА СПЕЦИАЛИСТИТЕ ПО КАЧЕСТВОТО В БЪЛГАРИЯ /ССКБ/

## UNION OF QUALITY EXPERTS IN BULGARIA

София – 1000, ул. Г. С. Раковски № 108, офис 601, тел./факс: 02 / 988-40-75; e-mail: sskb.bg@abv.bg

Изх. № 84 / 23.10.2013 г.

### СЛУЖЕБНА БЕЛЕЖКА

Настоящата служебна бележка се издава на доц. д-р Катерина Деспот от катедра "Архитектура и дизайн" на Университет "Гоце Делчев" - Щип, Р. Македония, в уверение на това, че същата е участвала с доклади на тема:

1. Decorative design in contemporary interior inspired by the carpets of the 19th century in Ohrid – **doc. d-r Katerina Despot**, doc. d-r Vaska Sandeva, doc. d-r Petar Namicev, Slave Arsov
2. Radiator as a sculptural form in the bathroom (Inspiration for creating and developing the heating element in the bathroom is a form of plant origin - Dandelion) – **doc. d-r Katerina Despot**, doc. d-r Vaska Sandeva, doc. d-r Petar Namicev, Sanja Taukova
3. Application of symmetry in the traditional architecture of the 19th and early 20th century in Macedonia – doc. d-r Petar Namicev, doc. d-r Vaska Sandeva, **doc. d-r Katerina Despot**
4. Space – interior and exterior – doc. d-r Vaska Sandeva, **doc. d-r Katerina Despot**, doc. d-r Petar Namicev
5. Old ohrid features - inspiration for contemporary exterior – doc. d-r Vaska Sandeva, **doc. d-r Katerina Despot**, Kaliopi Bosilanova
6. Modern style furniture and glass as part of the everyday interior – doc.d-r Vaska Sandeva, **doc.d-r Katerina Despot**, Alexander Ignatov, Verica Kukusheva

в XXII Международна научна конференция за млади учени „Мениджмънт и качество” от 17 до 19 октомври 2013 г. в Учебно-опитна база на ЛТУ – Юндола, България и е заплатила такса от 72 лева /седемдесет и два лева/ в брой.

Настоящата служебна бележка да послужи при необходимост.

Председател на ССКБ:



проф. д-р Георги Тасев