

Nenad POPOVIĆ

NEW PERSPECTIVE OPEN PIT MINES IN KOLUBARA LIGNITE BASIN IN SERBIA

Jože PEZDIČ, Ana R. MEDVED, Edi BURIČ, Antonija LESAR, Janja ŽULA SKORNŠEK, Lucija PETRINJAK, Tine PEZDIČ, Robert MORAVEC, Gašper TAVČAR, Simon ZAVŠEK
IMPROVEMENTS IN HIGH PRESSURE SORPTION INVESTIGATIONS OF COAL:
CASE STUDY OF THE VELENJE LIGNITE

Drago POTOČNIK, Janez ROŠER, Milivoj VULIĆ

MONITORING AND PREDICTING SURFACE MOVEMENTS IN THE VELENJE COAL MINE AREA

Vujadin ALEKSIC, Srdjan BULATOVIĆ, Ljubica MILOVIC

NDT IN FUNCTION PREVENTION OF LOSS INTEGRITY OF STRUCTURES LARGE DIMENSIONS

Naim BAF TIU

STORAGE AND PARAMETERS FRESH GRACE RECLAMATION POWER PLANTS KOSOVO

Prof. Stoyan CHRISTOV, dipl. eng. Delcho NIKOLOV

STRATEGY AND TACTICS AT DESIGNING AND EXPLOITATION OF DEEP OPENCAST MINES

Stojance MIJALKOVSKI, Zoran DESPODOV, Dejan MIRAKOVSKI, Marija HADZI-NIKOLOVA, Nikolinka DONEVA, Borce GOCEVSKI

MINING METHOD SELECTION FOR DEEPER PARTS OF "SVINJA REKA" ORE DEPOSIT - "SASA" MINE

Snezana VUKOVIC, Nenad VUSOVIC, Dejan PETROVIC, Andja SPASIC, Radoje PANTOVIC

THERMOVISION MONITORING OF THE PRODUCTION PROCESS IN FIRE PREVENTION

Vladan KASIC, Zivko SEKULIC, Slavica MIHAJLOVIC, Vladimir JOVANOVIĆ, Radule TOSOVIC

ANALYSIS OF UP-TO-DATE RESEARCH OF GOLD-BEARING ALLUVIUM DEPOSITS
FROM THE RIVER PEK-EAST SERBIA

Violeta ČOLAKOVIĆ, Vladan ČANOVIĆ

CHOICE OF OBJECTS FOR PROTECTION OF FLYING ASH AND BOTTOM ASH DEPOSITS FROM WATER

Živko SEKULIĆ, Vladimir JOVANOVIĆ, Slavica MIHAJLOVIĆ, Vladan KAŠIĆ, Dragan RADULOVIĆ, Branislav IVOŠEVIĆ

TECHNOLOGICAL PROCESS OF VALORIZATION OF CALCIUM CARBONATE
RAW MATERIAL FROM "KRALJEVA GORA" DEPOSIT

Risto DAMBOV, Todor DELIPETROV, Marjan DELIPETROV, Ilija DAMBOV

ANALYSIS OF THE OBTAINED STATISTICAL MEASUREMENT VALUES OF SEISMICAL BLASTING TREMORS

Saša MITIĆ, Dragan MILOJEVIĆ, Nenad MAKAR, Jovica NIKOLIĆ

UNDERGROUND PIT EXPLORATION IN THE "RAJIĆEVA GORA" NEAR BRUS, REPUBLIC OF SERBIA

MINING AND SAFETY

Branko LEKOVIĆ, Vesna KAROVIĆ MARIČIĆ, Dušan DANILOVIĆ

DRILLING FLUIDS AND ENVIRONMENTAL SAFETY

Ion TOTH, Constantin LUPU, Doru CIOCLEA, Cristian TOMESCU, Ion GHERGHE

INCREASING THE SAFETY LEVEL IN HARD COAL EXPLOITATION THROUGH INNOVATIVE RESEARCH

Marija KUZMANOVIĆ, Aleksandar MILUTINOVIĆ, Mirko VUJOŠEVIĆ, Biljana PANIĆ

EVALUATION OF THE EXTERNAL RISKS IN THE COAL MINING COMPANY KOSTOLAC, SERBIA

Slobodan TRAJKOVIĆ, Suzana LUTOVAC, Marina RAVILIĆ, Nikolinka DONEVA

ASSESSMENT OF BLAST EFFECT OPEN PIT „RANCI” OF SHOCK WAVES
ON CONSTRUCTED FACILITIES AND ENVIRONMENT

Dejan MIRAKOVSKI, Marija HADZI-NIKOLOVA, Nikolinka DONEVA,**Stojance MIJALKOVSKI, Gorgi VEZENKOVSKI**

MINERS' EXPOSURE TO GASEOUS CONTAMINATES CURRENT SITUATION AND LEGISLATION

EXPLOITATION

Simon ZAVŠEK, Sergej JAMNIKAR, Jerneja LAZAR, Ludvik GOLOB

CLEAN COAL TECHNOLOGIES AT PREMGOVNIK VELENJE

MSc Trajche BOSHEVSKI, Prof. D-r Risto R. DAMBOV

USAGE OF EMULSION EXPLOSIVES ON SURFACE MINE "ZELENIKOVEC" - SKOPJE

Diana TASHEVA, Zdravko ILIEV

ANALYSIS OF OSCILLATIONS IN THE SLEWABLE SUPERSTRUCTURE
OF THE Sch Rs 1200M BUCKET WHEEL EXCAVATOR

Dr. Stefan HINTERHOLZER

THE WORLD'S LARGEST COMPACT BUCKET WHEEL EXCAVATOR BY SANDVIK

Shaip LATIFI, Ahmet TMAVA, Ibush JONUZI

PHENOMENON OF STONE THROWING IN OPEN CAST MINING AND QUARRIES

Ivana SIMOVIĆ, Nebojša KOSTOVIĆ, Mirko SAVIĆ, Dijana VLAJIĆ
FGD GYPSUM TRANSPORT AND DISPOSAL ALTERNATIVES AT SERBIAN THERMAL POWER PLANTS

Misad BEČIĆ, Ruža ČELIKOVIĆ
SPATIAL DISTRIBUTION OF MINING MECHANIZATION DELAYS
IN SURFACE MINE DEPARTMENT OF BLACK COAL MINE BANOVICI

Dušan ČIŽMEK, mag. Ludvik GOLOB, mag. Bojan LAJLAR
SHAFT SINKING AT VELENJE COAL MINE

Mašan TRIFUNOVIĆ, Momčilo MOMČILOVIĆ, Milan PAVLOVIĆ
EXCAVATION OF OVERBURDEN IN THE WATERED WORKING AREA
ABOVE THE ROOF OF COAL IN EASTERN PART OF OPEN PIT "DRMNO"

GEOPHYSICS IN MINING

Blagica DONEVA, Marjan DELIPETREV, Todor DELIPETROV, Zoran PANOV
USING SEISMIC METHODS FOR DEFINING OPTIMAL PARAMETERS FOR BLASTING

Marjan DELIPETREV, Sanja POSTOLOVA, Blagica DONEVA, Gorgi DIMOV, Todor DELIPETROV
APPLYING GEOMAGNETIC RESEARCH METHOD IN ALLUVIAL DEPOSITS OF GOLD

Zoran PANOV, Risto POPOVSKI, Radmila KARANAKOVA STEFANOVSKA
APPLICATION OF GEOELECTRICAL RESEARCH IN WORKING ENVIRONMENT
FOR SLOPE STABILITY IN SURFACE MINES ASSESSMENT

Munever ČERGIĆ, Hamid HUSIĆ, Rasim KOVAČEVIĆ, Amira JALMANOVIĆ, Elvedina NUMANOVIĆ
RESPONSE OF STRUCTURES TO SEISMIC EFFECTS OF BLASTING
IN THE VICINITY OF SURFACE MINING RMU "BANOVICI"

Vladimir MANEVSKI, Todor DELIPETROV, Blagica DONEVA, Marjan DELIPETROV, Gorgi DIMOV
GEO-ELECTRICAL MODELS BASED ON DATA GAINED FROM THE COAL MINE "SUVODOL"

Todor DELIPETROV, Krsto Blazev, Blagica DONEVA, Marjan DELIPETREV, Gorgi DIMOV
APPLICATION OF GEOPHYSICAL METHODS IN EXPLORATION
AND EXPLOITATION OF MINERAL RAW MATERIALS

COMPUTER INTEGRATED SYSTEMS

Aleksandar KRSTEV, Boris KRSTEV, Blagoj GOLOMEOV, Mirjana GOLOMEOVA, Afrodit ZENDELSKA, Zivko GOCEV, Jordan ZIVANOVIK
THE KINETIC MODELING FROM DOMESTIC ORES USING SOFTWARE TOOLS

T. PENZOV, H. NONCHEV, I. LALOV
MICROPROCESSOR CONTROL SYSTEM FOR OPTIMIZATION
OF ORE-GRINDING PROCESS IN SEMIAUTOGENOUS MILL

V. F. SKOROKHODOV, M. S. KHOKHULYA, A. S. OPALEV, V. V. BIRUKOV, R. M. NIKITIN
COMPUTATIONAL FLUID DYNAMICS AS THE RESEARCH TOOL FOR MINERALS SEPARATION PROCESSES

Elena GELOVA, Aleksandar KRSTEV, Jordan ZIVANOVIK, Aleksandra STOJANOVA
THE CONVEX PROGRAMMING

Yordanka ANASTASOVA, Nikolay YANEV, Kantcho IVANOV
APPLICATIONS OF MS PROJECT FOR CREATION AND MANAGEMENT SCHEDULES OF MINING ACTIVITIES

ROCK MECHANICS, MASSIF CONTROL AND SLOPE STABILITY

Prof. Georgi MIHAYLOV, Assoc. Proc. Georgi TRAPOV, Mariana TRIFONOVA
ANALYSIS OF STATE OF STRESS AND DEFORMATION OF THE MASSIF
TAKING INTO CONSIDERATION PROBABILISTIC NATURE OF MECHANICAL CHARACTERISTICS

MSC, Ing. Yili KOTEMELO, dr. Edmond GOSKOLLI, Ing. Arjo LULE
THE FALL OF THE EMBANKMENT IN BEJAR GEOLOGICAL PHENOMENA ANALYSIS (Case Study)

Gorgi DIMOV, Blagica DONEVA, Marjan DELIPETROV, Todor DELIPETROV
CORRELATION BETWEEN SEISMIC VELOCITIES AND GEOTECHNICAL PARAMETERS OF CARBONATE DEPOSITS

Dragan M. MILOŠEVIĆ, Željko PRAŠTALO, Simeun MARIJANAC, Zoran MILANOVIĆ
FUNCTIONAL REHABILITATION OF THE DISRUPTED NORTHERN SLOPE
OF THE OPEN PIT MINE ČIRIKOVAC IN THE COAL BASIN OF KOSTOLAC, REPUBLIC OF SERBIA

Huseyin ANKARA, Mehmet AKSOY, Suheyra YEREL, Yasar KESER, Zeynep CICEKCI
DETERMINATION OF SLAKE DURABILITY INDEX ON SATURATED SPHERICAL SAMPLES

KOZYREV A. A., SEMENOVA I.E., RYBIN V.V., AVETISYAN I.M.
RESULTS OF RESEARCH OF STRESS STRAIN STATE WITHIN DEEP OPEN PITS UNDER TECTONIC STRESSES

A. A. KOZYREV, V. V. RYBIN, K. N. KONSTANTINOV
FIELD-SCALE INVESTIGATIONS OF THE STRESS FIELD
AND THE EXCAVATION DAMAGED ZONE EXTENT, THE KOLA PENINSULA, RUSSIA

Sladjana KRSTIC, Vesna LJUBOJEV, Milenko LJUBOJEV, Dusan TASIC, Ivana JOVANOVIC
GEOTECHNICAL INVESTIGATIONS IN THE DAM 2 FLOTATION TAILINGS VELIKI KRIVELJ (SERBIA)

Vladimir VUTOV, Ventsislav IVANOV
METHODOLOGY FOR GEOMECHANICAL LOGISTICS OF DESIGN AND CONSTRUCTION
OF A TRANSPORT TUNNEL AT "ELATZITE COOPER" MINE, BULGARIA

Ljupcho DIMITRIEVSKI, Darko ILIEVSKI, Ljubisha KOSTADINOV, Ljube IVANOVSKI, Dragan MILENKOVSKI
GEOMECHANICAL STABILITY MONITORING IN THE REK BITOLA MINES

Slavica MIHAJLOVIĆ, Dušica VUČINIĆ, Živko SEKULIĆ, Vladimir JOVANOVIĆ, Dragan RADULOVIĆ
PHYSICAL-CHEMISTRY CHARACTERIZATION OF THE MODIFIED LIMESTONE

Ing. Petr TOMEK
SLIDING PARTS WEAR INFLUENCE TO DRIVE UNIT LOADING OF LONGWALL SHEARERS

Ljupce KULAKOV, Zoran GJORGIEVSKI, Zlatko ILIJOVSKI
WORKING AND FINAL SLOPES STABILITY ANALYSIS IN SURFACE EXCAVATION MINE R'ZANOVO

**Vladimir JOVANOVIĆ, Živko SEKULIĆ, Branislav IVOŠEVIĆ,
Slavica MIHAJLOVIĆ, Milan PETROV, Dragan RADULOVIĆ, Vladan KAŠIĆ**
MECHANICAL PROPERTIES OF LIMESTONE BRIQUETTES WITH BENTONITE FOR CALCIFICATION OF ACID SOIL

Sair KAHRAMAN, M. Suat DELIBALTA, Ramazan COMAKLI
EVALUATING THE NOISE FROM BLOCK CUTTING MACHINES
USING THE PHYSICO-MECHANICAL ROCK PROPERTIES

BALKAN MINERAL INDUSTRY

Dragan S. RADULOVIĆ, Slavica R. MIHAJLOVIĆ, Vladimir D. JOVANOVIĆ, Dušica R. VUČINIĆ
POSSIBILITY OF USING LIMESTONE FROM "VOLUJICA" - ULCINJ DEPOSIT
AS FILLER IN VARIOUS INDUSTRY BRANCHES

Ass.prof. Željko VUKELIĆ, Marijan KRALJIĆ, Ass.prof. Evgen DERVARIĆ
LENDAVA - THE FIRST GEOTHERMAL CITY IN SLOVENIA

SYSTEM ENGINEERING

Bozica SANDIC, Jelena MILOSEVIC, Radmilo GLISIC
GREEN ENERGY FROM THE *NIKOLA TESLA* THERMAL POWER PLANTS
IN OBRENOVAC (Cooling Water System Hydropower Plant)

MANAGEMENT AND MINING ECONOMICS

Milena POPOVIĆ, Marija KUZMANOVIĆ, Mirko VUJOŠEVIĆ, Aleksandar MILUTINOVIĆ
MINIMIZATION OF BUSINESS RISKS IN MINING COMPANIES
THROUGH LOADERS-TRUCK EQUIPMENT SELECTION

Eng. Lachezar TSOTSORKOV PhD, Eng. Delcho NIKOLOV, Eng. Michail MICHAILOV
CYCLIC FLOW CONVEYOR SYSTEMS - PRESENT AND FUTURE
AT THE ASSAREL MINE OPERATIONS, ASSAREL-MEDET SC - BULGARIA

Prof. Dushan NIKOLOVSKI Ph.D.
METHODOLOGY FOR INVESTMENT DECISIONS IN ACTIVE MINES

Dr. Ari ARTINYAN, Luben DIMOV
ON-LINE ASH-ANALYZERS AND SCALES IN OPEN COAL MINES - Coal Quality Management System

Daniela MLADENOVSKA, Ana M. LAZAREVSKA
DETERMINING RELEVANT ATTRIBUTES AND CORRESPONDING INDICATORS
IN A DECISION MAKING CONCEPT FOR SITE-SELECTION OF COAL FIRED THERMAL POWER PLANTS

Ahmet BYTYČI, Edmond GOSKOLLI, Idaver HISEINI, Nexhmi KRASNIQI
COST BENEFIT ANALYSIS IN LIMESTONE DEPOSIT, REPUBLIC OF KOSOVO

Marko BABOVIC, M.Sc., Branislav BABIC, B.B.A.
TECHNICAL-ECONOMIC FEASIBILITY OF THE EXECUTED GEOTECHNICAL INVESTIGATIONS
FOR THE NIKOLA TESLA B UNIT 3 AND SMALL HYDROPOWER PLANT CONSTRUCTION IN OBRENOVAC

Snežana KIRIN, Aleksandar SEDMAK, Tamara SEDMAK, Vesna DAMNJANOVIĆ
MODERN MINING INDUSTRY MANAGEMENT - SYNERGY OF QUALITY AND RISK BASED APPROACH

Svetomir MAKSIMOVIĆ, Igor MILJANOVIĆ
PHASES AND FIRST RESULTS OF SHAREHOLDING AND PRIVATISATION
IN PRODUCTION ENTERPRISES OF THE COAL INDUSTRY - EXPERIENCES OF OTHER COUNTRIES

Krastu DERMENDJIEV, George STOYANCHEV
THE MINING INDUSTRY FUTURE

Zoran PANOV, Radmila KARANA KOVA STEFANOVS KA, Risto POPOVSKI, Kirco MINOV, Blagica DONEVA
ANALYSIS OF THE TRANSPORT DISTANCES
IN DEFINING THE EXPLOITATION COSTS OF DEPTH OPEN PITS OF METALS

Prof. As. Dr. Skender LIPO, Dr. Arben BAKIU
MANAGEMENTS OF MINING RECOVERY

Prof Dr Shyqri KELMENDI, Fehmi AZEMI, Qazim JASHARI, Faton KELMENDI
IMPORTANT ECONOMICAL INDICATORS OF MODERN MINING PRODUCTION

MINERAL PROCESSING

Boris KRSTEV, Aleksandar KRSTEV, Mirjana GOLOMEOVA, Zivko GOCEV
THE PRESENTATION OF LEACHING AND BIO-LEACHING FROM DIFFERENT ORES USING SIMPLEX EVOP

Boris KRSTEV, Aleksandar KRSTEV, Mirjana GOLOMEOVA, Afrodita ZENDELSKA, Zivko GOCEV
THE OPTIMIZATION AND MATHEMATICAL MODELLING
- THE PRECONDITION FOR INCREASING OF RECOVERIES FROM DOMESTIC MINES

Milena DANOVS KA, Mirjana GOLOMEOVA, Dejan KARANFILOV, Afrodita ZENDELSKA
TREATMENT OF Fe(III) IONS FROM LEACHING SOLUTIONS WITH NEUTRALISATION AND PRECIPITATION

Dragan S. RADULOVIĆ, Velimir ANTANASKOVIĆ, Slavica R. MIHAJLOVIĆ, Branislav IVOŠEVIĆ, Vladimir JOVANOVIĆ
CONCEPT OF SECONDARY AND TERTIARY CRUSHING PLANT FOR PROCESSING LIMESTONE
AND PRODUCTION OF ROCK AGREGATES FROM "SUVO DO" JOINT-STOCK COMPANY - JELEN DO DEPOSITS

Ivana JOVANOVIĆ, Srđana MAGDALINOVIĆ, Daniela UROŠEVIĆ, Igor MILJANOVIĆ, Sanja BUGARINOVIĆ, Dragan MILANOVIĆ
POSSIBILITY OF BARITE CONCENTRATION FROM POLYMETALLIC SULPHIDE-BARITE ORE
USING GRAVITY AND FLOTATION CONCENTRATION METHODS

Miomir MIKIĆ, Daniel KRŽANOVIĆ, Milenko LJUBOJEV, Radmilo RAJKOVIĆ
AUSCULTATION OF FLOTATION TAILINGS VELIKI KRIVELJ
WITH EMPHASIS ON THE CURRENT STATE OF KRIVELJ'S RIVER COLLECTOR, SERBIA

Shyqri KELMENDI, Halil QELA, Bajram MUSTAFA
MINING PRODUCTION OF CONCENTRATES AND BASE METALS IN THE REGION

Violeta STEFANOVA, Vojo MIRCOVSKI, Violeta STOJANOVA, Gose PETROV, Zoran PANOV
GOLD GRAIN MORPHOLOGY AND COMPOSITION IN SOME LOCALITY IN R. MACEDONIA

ENVIRONMENTAL ENGINEERING

Angelica DRĂGHICI, Gheorghe GHEȚIE, Lorand TOTH, Marius KOVACS, Cosmin ILIE
IMPACT OF THE WORKFLOW FROM QUARRYS
ON THE SURROUNDING ENVIRONMENT CASE STUDY - SC CUPRUMIN S.A. ABRUD

Nebojša ATANACKOVIĆ, Veselin DRAGIŠIĆ, Vladimir ŽIVANOVIĆ, Jana STOJKOVIĆ, Marina ĆUK, Petar PAPIĆ
ARSENIC IN MINE WATERS FROM ABANDONED BASE-METAL AND GOLD MINING SITES IN SERBIA

Orce SPASOVSKI, Daniel SPASOVSKI
HEAVY AND TOXIC METALS AND NUTRIENTS IN SEPARATE PLACES
IN THE RIVER BREGALNICA (EASTERN MACEDONIA)

Dragoljub UROSEVIC, Branimir ANDELIC, Uros UROSEVIC, Rasa DJUROVIC
CONTRIBUTION TO CONSTRUCTION, REMEDIATION AND RECULTIVATION
OF SECONDARY MINING AND ENERGY FACILITIES IN ORDER TO ENVIRONMENTAL PROTECTION

Dragan DRAŽOVIĆ, Pavle STJEPANOVIĆ, Klara KONC-JANKOVIĆ, Jasmina NEGROJEVIĆ
THE SEMI-INDUSTRIAL TEST OF THE EXPERIMENTAL SYSTEM
FOR RESEARCH OF THE FLYING ASH AND BOTTOM ASH HYDRO-TRANSPORT

Dijana VLAJIĆ, Mirko SAVIĆ, Ivana SIMOVIĆ, Lazar ANĐELIĆ, Željko PRAŠTALO
CONCEPTUAL SOLUTION FOR THE PERMANENT CLOSURE
OF FLY AND BOTTOM ASH DISPOSAL SITE AT TPP KOSTLAC A AND B

Daniel KRŽANOVIĆ, Zoran VADUVESKOVIĆ, Nenad VUŠOVIĆ, Miomir MIKIĆ, Miodrag ŽIKIĆ
CONCEPTUAL SOLUTION OF DISPOSAL THE OPEN PIT WASTE ROCK AND DEWATERING SYSTEM
IN A FUNCTION OF ENVIRONMENTAL PROTECTION IN EXPLOITATION THE COPPER DEPOSITS
"KRAKU BUGARESKU - CEMENTACIJA" AND "CEROVO" SERBIA

Msc Aleksandar LAZAROV
ENVIRONMENTAL PROTECTION ACCORDING BEST AVAILABLE
TECHNIQUES FROM IMPACT AT TAILING DAM TORANICA

Orce SPASOVSKI, Daniel SPASOVSKI
GEOCHEMICAL CHARACTERISTICS AND SIGNIFICANCE OF TAILING DUMP
FROM POLYMETALLIC Pb - Zn DEPOSIT ZLETOVO (REPUBLIC OF MACEDONIA)

Ion GHERGHE, Doru CIOCLEA, Constantin LUPU, Corneliu BOANTĂ, Florin RĂDOI, Vlad Mihai PĂSCULESCU
GENERAL VENTILATION FANS USED FOR THE AERATION OF HARD COAL MINES IN JIU VALLEY COAL FIELD

Milinko RADOSAVLJEVIĆ, Siniša STOJKOVIĆ, Mihajlo GIGOV
PROBLEMS OF STUDY PREPARATIONS ON EVALUATION OF INFLUENCES
ON THE ENVIRONMENT FROM THE LEGAL REGULATIONS PERSPECTIVE

Grozdana NEŠIĆ, Miodrag ŽIKIĆ, Saša STOJADINOVIĆ, Snežana VUKOVIĆ, Nenad VUŠOVIĆ, Radoje PANTOVIĆ
SPECIFICITIES OF OPEN PIT TAMNAVA - WEST FIELD REMEDIATION

Afrodita ZENDELSKA, Mirjana GOLOMEOVA, Boris KRSTEV, Blagoj GOLOMEOV, Aleksandar KRSTEV
THE IMPACT OF THE TAILING DAM OF THE SASA MINE ON SOILS IN THE KOCANI VALLEY

Željko PRAŠTALO, Simeun MARIJANAC, Dragan M. MILOŠEVIĆ, Branka JOVANOVIĆ
TECHNICAL RECLAMATION OF THE FLYING ASH AND BOTTOM ASH DEPOT IN THE COAL BASIN KOSTOLAC

Tena SIJAKOVA-IVANOVA, Zoran PANOVA, Vojo MIRCOVSKI
OPPORTUNITIES FOR UTILIZATION OF FLY ASH FROM THERMAL POWER PLANT, REPUBLIC OF MACEDONIA

RESTRUCTURING AND REENGINEERING

Gafur MUKA, Thoma KORINI, Vasil JORGJI, Ramiz BALLA
A CRITICAL REVIEW OF PROBLEMS ASSOCIATED
WITH THE REACTIVATION OF ABANDONED AREAS OF BULQIZA CHROME MINE

Marko RANZINGER, Marjan HUDEJ
REENGINEERING OF OLD RAILWAY TUNNELS LEŽEŠKI,
JURGOVSKI AND KRIŽIŠKI ON THE MAIN RAILWAY LJUBLJANA-KOPER

LEGISLATION, NORMS AND EDUCATION

Msc. Jorgaq THANAS, Eng. Bardhyl SHUSHKU
MINING WASTES IN ALBANIA - LEGISLATIVE FRAME AND THEIR STATE

Nevezat KAVAKLI Ph.D., Sadi CIVELEKOĞLU, Serdar ÇULHA M.Sc., Şükrü ŞAFAK M.Sc.
FEATURES OF TURKISH MINING LAW AND ITS IMPLEMENTATION

EXPLOITATION OF SOLID MINERAL RESOURCES

Prof. d-r Risto DAMBOV, Goran STOJKOSKI, Dimitar HRISTOV, Nikola RZANIKOSKI
TECHNO-ECONOMICAL ANALYSES OF THE METHODS FOR PRODUCING OF DIMENSION STONE BLOCKS

Goran BLAZESKI, Vladimir DILEVSKI
AUTOMATION SYSTEM FOR THE WELL DRAINAGE SYSTEM AT COAL MINE
"UNDERLYING SEAM SUVODOL", MINING POWER COMPLEX BITOLA

Branka JOVANOVIĆ, Miodrag PRIBIĆEVIĆ, Željko PRAŠTALO, Simeun MARIJANAC
LIMESTONE EXCAVATION TECHNOLOGY OF LIEBHERR R 984 C EXCAVATOR AT THE SURFACE MINE MUTALJ

Dragica STOJILJKOVIC, Snezana KOMATINA-PETROVIC, Biserka DIMISKOVSKA, Jelena STETIC, Jelena NINIC-TODOROVIC
ARRANGEMENT OF SURFACE EXCAVATIONS OF NON-METAL MINERAL RAW MATERIAL

Roman ROŠER, Marjan HUDEJ, Marko RANZINGER
EXPLOITATION OF SOLID MINERAL RESOURCES IN PAKA QUARRY

Wolfgang SCHROTH
HIGH UNDERGROUND COAL PRODUCTION,
BY MEANS OF POWERFUL AND HIGH PERFORMANCE SHEARER LOADERS

Nikolinka DONEVA, Marija HADZI-NIKOLOVA, Dejan MIRAKOVSKI, Stojanče MIJALKOVSKI
CONSTRUCTION OF HORIZONTAL MINING FACILITIES THROUGH SCHIST'S MASSIVE

Pece MURTANOVSKI, m-r Bojan LAJLAR, m-r Janez MAYER, Špegel BOŽO, Marijan LENART
NEW UNDERGROUND COAL MINE "MARIOVO"

Zoran ILIC, Rajko STOJAKOVIC, Zvonko BELACEVIC
MINING BASIN KOLUBARA - A VARIANT OF THE OPENING OF THE NEW OPEN PIT MINE

Zoran DESPODOV, Dejan MIRAKOVSKI, Stojance MIJALKOVSKI, Adjiski VANCHO, Borce GOCEVSKI
OPPORTUNITIES FOR REPAIRING THE UNLOADING BUNKER ON SHAFT GOLEMA REKA - SASA MINE

MINERAL RESOURCES AND MINE GEOLOGY

Miodrag BANJEŠEVIĆ, Duncan LARGE
THE TIMOK COPPER-GOLD PROJECT
- GEOLOGY AND MINERALIZATION (TIMOK MAGMATIC COMPLEX - EASTERN SERBIA)

Vojislav MRDJA
CONTRIBUTION TO THE KNOWLEDGE OF THE METALLOGENY IN ORE FIELD KOSMAJ-BABE

Msc Rade STANKOVSKI
GEOLOGY CHARACTERISTICS AT TORANICA DEPOSIT

Krsto BLAZEVIĆ, Blagica DONEVA, Marjan DELIPETREVIĆ, Gorgi DIMOV

QUARTZ RAW MATERIALS IN THE REPUBLIC OF MACEDONIA

Violeta STOJANOVIĆ, Goše PETROVIĆ, Violeta STEFANOVIĆ, Blazo BOEVIĆ

GEOLOGICAL AND CHEMICAL CHARACTERISTICS OF DIATOMACEOUS EARTH
FROM THE DEPOSIT VESHJE NEAR NEGOTINO - R. MACEDONIA

Msc Zlatko ILIJOVIĆ, Stojan MIHAILOVIĆ, Dragan NASEVIĆ, Ljupce PETREVIĆ, Blagoj GJORGIEVIĆ, Mirjana TRPCEVIĆ

DRAINAGE WELLS CONSTRUCTION AS PART OF S.E.M. SUVODOL, REK BITOLA

Laste IVANOVIĆ, Zlatko ILIOVIĆ, Elizabeta RALEVA

RESULTS FROM THE MOST RECENT GEOLOGIC INVESTIGATIONS OF THE COAL MINE MARIOVO

Elizabeta RALEVA, Zlatko ILIJOVIĆ, Laste IVANOVIĆ, Trifun MILEVIĆ

RESULTS FROM NEWEST GEOLOGICAL INVESTIGATIONS OF COAL DEPOSIT "ZIVOJNO"

Rudolf TOMANEĆ, Predrag LAZIĆ, Radmila GAĆINA, Sanja BAJIĆ

ORE MICROSCOPY ANALYSIS METHODS IN MINERAL CONCENTRATION PROCESSES

Vojo MIRKOVIĆ, Violeta STEFANOVIĆ, Tena SIJAKOVIĆ-IVANOVIĆ, Gorgi DIMOV, Vasko MIRKOVIĆ

UTILIZING GABBRO OF SITES PANTELEJ AS CONSTRUCTION-TECHNICAL STONE

HISTORY AND MINE EDUCATION

Jovica NIKOLIĆ, Nenad MAKAR, Dragan MILOJEVIĆ, Saša MITIĆ

CONCEPT OF THE MINING MUSEUM IN KOSTOLAC, REPUBLIC OF SERBIA

Valentina MANEVIĆ, Roze ARSOVIĆ

REFORMING THE EDUCATIONAL SYSTEM - BUILDING QUALITY WORKFORCE



GEOLOGICAL AND CHEMICAL CHARACTERISTICS OF DIATOMACEOUS EARTH FROM THE DEPOSIT VESHJE NEAR NEGOTINO - R. MACEDONIA

Violeta STOJANOVA¹, Goše PETROV², Violeta STEFANOVA³, Blazo BOEV⁴

¹ Faculty of Natural and Technical Sciences, Štip, R. Makeodonija, violeta.stojanova@ugd.edu.mk

² Faculty of Natural and Technical Sciences, Štip, R. Makeodonija, gose.petrov@ugd.edu.mk

³ Faculty of Natural and Technical Sciences, Štip, R. Makeodonija, violeta.stefanova@ugd.edu.mk

⁴ Faculty of Natural and Technical Sciences, Štip, R. Makeodonija, blazo.boev@ugd.edu.mk

ABSTRACT

This paper presents the results of the geological and chemical research of Diatomaceous earth in the deposit Veshje near by Negotino.

The deposit - Veshje belongs to Tikvesh basin which is situated in the central part of Vardar zone. This rich and numerical representation of diatomaceous flora and conditions that were present in the upper lake basin during Pliocene are actually the major factors for the formation of productive layer of Diatomaceous earth. Productive diatomaceous horizon appears in a form of a layer, with a length of 1-2 km and a thickness of 0,6 - 1,25 m, tending to form a spike towards the peripheral parts of the basin. Immediate layers above and below of the productive horizon are the andesite tuffs and agglomerations.

Based on chemical analyzes made done on Diatomaceous earth from Veshje, it resulted in the following content: SiO₂ - 78.40 %, Al₂O₃ - 6.40 % CaO - 2.20% and Fe₂O₃ - 2.60 %. Under this structure, Diatomaceous earth is a quality mineral resource which can be applied for filtration, thermal insulation and many other uses in industry and construction.

KEYWORDS:

Diatomaceous flora, Diatomaceous earth, Tikvesh basin, Pliocene

1. INTRODUCTION

Diatomite represent siliceous, sedimentary rock consisting principally of the fossilized skeletal remains of diatom, a unicellular aquatic plant related to the algae, during the tertiary and quaternary periods ([1] [12]).

Diatomaceous earth (DE), or diatomite, typically consists of 86–91% silicon dioxide (SiO₂), with significant quantities of alumina (Al₂O₃) and ferric oxide (Fe₂O₃) [5].

Amorphous silica, is the main component of diatomite, although variable quantities of other materials (metal oxides, clays, salts - mainly carbonates and organic matter) may also be present, chemical precipitation and atmospheric contact, together with the prevailing environmental conditions, are determinant factors in the nature and importance of the impurity

content of a deposit [11]. Due to its specific properties (porous structure, high silica content, low density, low conductivity coefficient, etc.) [5], DE has extensively been applied in many ways, such as filter aid, adsorbent, insulating material, catalyst support or carrier [15]. Diatomaceous earth recently represents an effective natural inert powder that is used as an insecticide.

1.1. Geological structure of the wider surrounding area of the deposit Veshje

The deposit of Diatomaceous earth Veshje is located 2.5 km SW of the village Veshje, or about 14 km south of the city Negotino and at territory it lies on the northeastern slopes of the volcanic plateau Vitacevo. In geological terms the deposit Veshje belongs to Tikvesh basin situated in central Vardar zone on the territory of the Republic of Macedonia.

The wider surroundings of the site are characterized by heterogeneous lithological structure, dominated by tectonic elements of Vardar direction (Fig. 1).

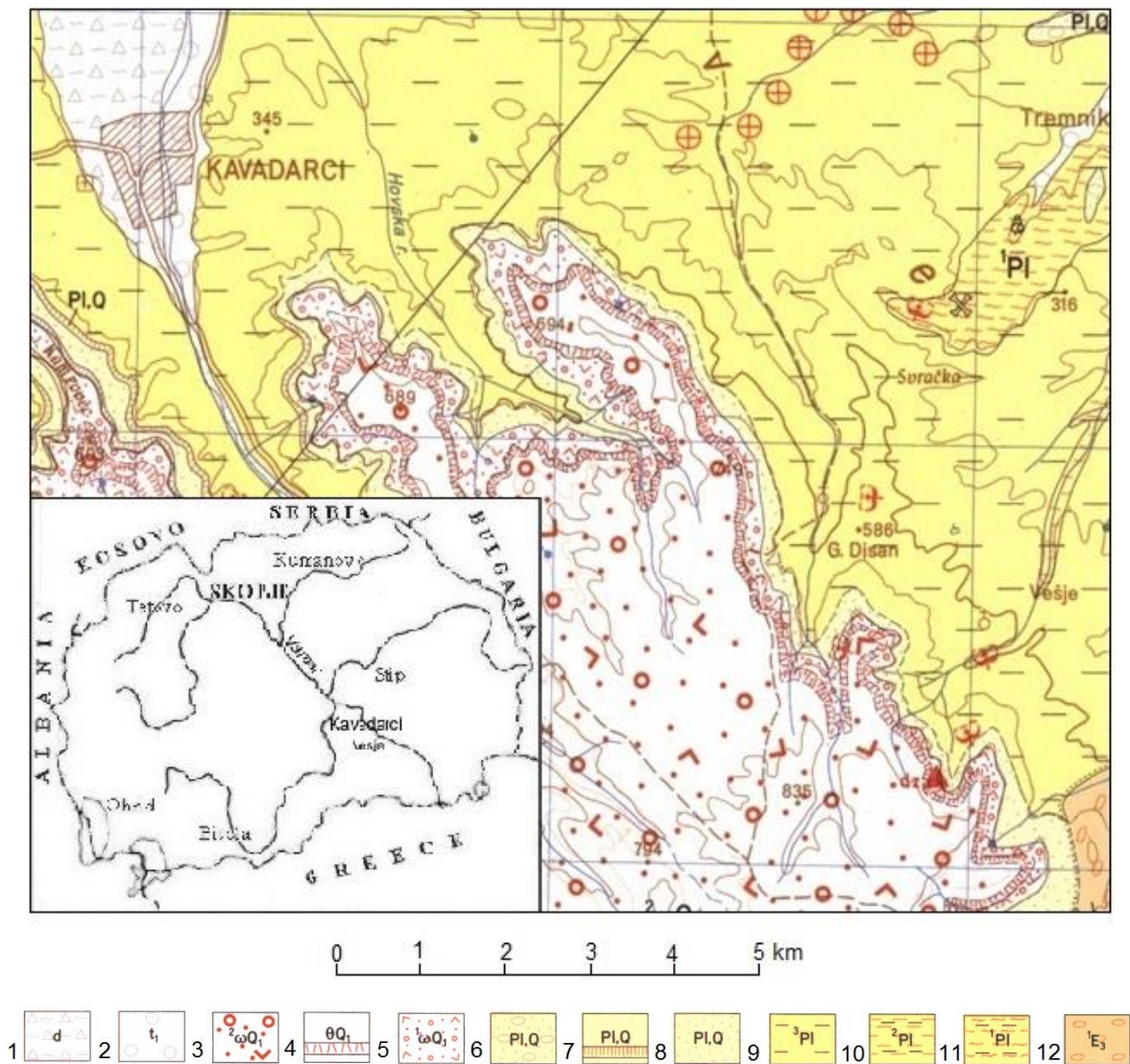


Fig. 1. Geological map of the vicinity of the deposit of Diatomaceous earth Veshje

1. Deluvium, 2. Lower river terrace, 3. Breccious tuff, 4. Stratified pelite tuff, 5. Agglomeratic and breccious tuff, 6. Sands and gravels, 7. Travertine limestones, 8. Sands, 9. Sandy series, 10. Series of marls and claystone with layers of coal, 11. Series of variegated clays, 12. Conglomeratic flysch

Heterogeneous lithological structure is represented by metamorphic rocks of Precambrian complex, rocks of Paleozoic complex, and Mesozoic rocks. The highest prevalence in the vicinity

of Veshje is at tertiary sedimentary rocks of the Paleogene (Upper Eocene) and Neogene (Pliocene) and quarterly sediments and volcanite.

Upper-Eocene sediments - are represented in the area of so-called basal lithozone (${}_1E^3$), and they are found in the eastern regions of Veshje, specifically in the area of the village Vesvica. The basal lithozone is constructed of thick conglomerates around 600 m, built boulders of diabases, gabbro, and quartzite, and the upper part of Upper Jurassic limestone, rarely shale, diabases and gabbro.

Upper-Pliocene sediments - are represented by a sandy series Pl_3 , which also have the highest prevalence in the basin. This series is made of sands and gravels with mostly yellowish color, and it is rarely seen and sub-layers of sandy clays, shales and poorly bonded sandstone. This series contains weak upper bound conglomerates, down to the southwest angle 3-5°. These sediments are found as containing fossil remains of *Mastodon arvernensis*, upon which the age of the sediments is defined as intermediate - Upper Pliocene [6].

Sediments of the Upper Pliocene-Pleistocene (Pl, Q) - are represented by limestone chalks and sand, and as the youngest occur at pyroclastic quaternary volcanite constituting immediate construction of the site Veshje.

a) Travertine limestones (with sub-layers of gray sandstone) occurs in the form of two well layered plates south and southeast of Kavadarci (rare in the villages Disan and Veshje, which are most probably eroded). This series falls under the SW corner 3-5°, and the thickness of the plates is 3-8 m. Over the limestone chalks there are yellow sands lying, similar to those of the upper Pliocene.

b) Pyroclastic quaternary volcanite – represent a part of the lake plateau Vitacevo and an end to the northern parts of Kozhuf quartzlatite massive volcanism [2]. They lie on older but different geological formations, and at the examined area they lie on Upper-Pliocene series. At the site of diatomaceous soil Veshje pyroclastic lie directly above the productive layer. Within these pyroclastites distinguished are: agglomerates, tuffs and stratified breccia.

1.2. Geological structure of the deposit Veshje

At the geological structure of the deposit Veshje there are lithological members volcanogenic-sedimentary complex of Pleistocene plateau Vitacevo or lower-quarterly age participating. The most represented pyroclastic creations presented with andesite agglomerates and volcanic andesite breccia, less stratified pelitic tuffs, diatomaceous earth, rarely limestone chalks and quaternary (diluvial) sediments.

The Upper Pliocene sediments (sand series) are presented in the northeastern and southeastern brim of the site (between Popovec- Pesokot and Osojot) and by stratigraphy they lie at the site shelf. Built from poorly clay bonded sands, rarely layered with marley and sandy clay, and rarely created as well of thin plates of grey-white limestone chalk. Generally these sediments have a NNW-SSE stretching and gently sink to the SW angle 2-3°.

Andesite pyroclastites lie directly on sandy series and are a product of quarterly Kozhuf volcanism. These creations lie at shelf and overlain the site, i.e. they occur in multiple stages of volcanic activity. For the most part, at the shelf of the locality there are andesite grainy gray tuffs lying with thickness of about 2 m, and below them almost everywhere there are andesite agglomerates or agglomerate tuffs occurring. The emergence of grain andesite tuffs can be considered as the beginning of a quieter phase, when freshwater lake where diatomite could be developed, which later on produced the material to create a layer of Diatomaceous earth.

Deposition of Diatomaceous earth is interrupted by starting a new volcanic activity, with more explosive nature, characterized by a series of andesite agglomerates, andesite agglomerative tuffs, rarely andesite breccia.

Andesite agglomerates almost everywhere lie directly over the layer of diatomaceous soil, and they occur in many of sub-layers of andesite agglomerative tuffs, and in some places and medium-grain andesite tuffs.

Visible signs of stratification of the series indicate that it was created (deposited) in the aquatic environment. Andesite agglomerates prevail with rounded fragments - volcanic bombs with diameters of 0.5 m. By contrast, in andesite agglomerative tuffs these fragments are no larger than 0.5 cm.

The total thickness of the pyroclastic complex of the examined locality is about 160 m, and probably the same in the vicinity (in higher areas) is not greater than 200 m.

2. MATERIALS AND METHODS

Material for studying the chemical composition of Diatomaceous earth represent 16 samples from the productive layer of the core 11 investigative drill-holes (D1, D2, D3, D4, D5, D8, D9, D10, D15, D16 and D19). Chemical characteristics of the mineral resource - Diatomaceous earth are determined by classical complete chemical analysis of 12 elements.

3. RESULTS AND DISCUSSION

The rich and numerical representation of diatomite flora and the conditions that were present at the lake basin during the Upper Pliocene, constitute major factors in the formation of the productive layer of diatomaceous earth at the deposit Veshje.

Diatomaceous productive horizon in the deposit Veshje has a shape of a layer that lies between the andesite tuffs and agglomerates. The thickness of diatomaceous layer is variable, from 0.35 m in the peripheral parts up to 1-1.25 m at the central parts.

The color of the diatomaceous earth is different, depending on its composition or quality. There are varieties with white to gray-white, light gray and violet, and light beige etc. There are frequent sub-layers of clay-sandy sediments tuff-clay material of tufa and opal sub-layers and fossil flora at certain places in the productive layer. The thickness of these is 2-20 cm.

The layer of Diatomaceous earth is sub-horizontal with the general decline towards SW angle of 2-3°, which in many places has frequent wedging as a result of erosive action of waves in relatively shallow lake environment. This diatomaceous wedging is associated with a relatively short period of shallowness of the lake's basin, as well as explosive volcanism, which has probably put an end to the development of microorganisms - diatoms and other wildlife in the lake.

Determining the quality of mineral resource-diatomaceous earth is done by the method of classical chemical analysis of 12 elements of samples taken from the productive layer of the core of the drill-holes.

The data obtained by chemical analysis of diatomaceous earth of 16 samples of investigative drill-holes presented in Tables 1 and 2 show that the minimum content of SiO₂ in some blocks of the site Veshje in the drill D9 is 62.07% and the drill D8-2 65.70%. Maximum content of 87% was observed in the drill D19, and in the space of the old goldmine where the SiO₂ content is 90%.

Table 1. Chemical composition of Diatomaceous earth from the deposit Veshje – Negotino

	D1-1	D1-2	D2	D3-1	D3-2	D4	D5	D8-1
SiO ₂	80.00	66.64	77.78	67.54	80.21	86.05	80.24	79.30
TiO ₂	0.25	0.35	0.20	0.62	0.22	0.07	0.25	0.15
Al ₂ O ₃	4.60	9.43	5.60	15.54	4.59	1.78	5.10	5.60
Fe ₂ O ₃	1.43	3.77	2.14	6.86	1.72	0.86	2.14	2.08
MgO	0.93	3.35	0.72	2.02	0.77	0.34	0.74	0.81
CaO	1.40	2.36	2.05	2.60	1.41	2.00	1.70	1.66
Na ₂ O	0.70	1.65	0.65	2.25	0.70	0.28	0.80	0.80
K ₂ O	0.50	1.25	0.62	2.70	0.58	0.25	0.70	0.40
Loss of ignition	10.02	10.95	10.10	8.50	9.70	8.05	8.40	9.35
Total	99.83	99.75	99.86	100.13	99.90	99.78	100.06	100.15

Table 2. Chemical composition of Diatomaceous earth from the deposit Veshje - Negotino

	D8-2	D9-1	D9-2	D10-1	D10-2	D15	D16	D19
SiO ₂	65.70	62.70	42.62	85.70	85.20	75.88	85.00	87.02
TiO ₂	0.50	0.45	0.45	0.10	0.10	0.35	0.16	0.10
Al ₂ O ₃	13.00	12.50	11.22	3.31	3.06	6.88	3.31	2.24
Fe ₂ O ₃	4.29	3.72	3.86	1.43	1.14	3.00	2.19	3.07
MnO	-	-	-	-	-	0.12	0.06	0.05
MgO	1.98	3.30	1.86	0.50	0.52	1.61	0.65	0.88
CaO	2.73	5.04	19.04	1.68	1.46	3.36	4.40	3.70
Na ₂ O	2.10	3.30	2.70	0.80	1.10	0.90	0.64	0.37
K ₂ O	1.60	2.50	1.80	0.50	0.40	0.80	0.39	0.31
P ₂ O ₅	-	-	-	-	-	1.48	0.40	1.18
SO ₃	-	-	-	-	-	-	-	-
Loss of ignition	7.98	6.80	16.25	5.85	6.80	5.23	3.06	1.47
Total	99.88	99.60	99.80	99.87	99.78	99.61	100.26	100.39

Based on the analyses the average SiO₂ content of the entire site was 78.40%, Al₂O₃ 6.40%, CaO 2.20%, Fe₂O₃ 2.60% and loss during ignition 7.50% (Table 3).

Table 3. Chemical composition of the essential components of Diatomaceous earth in the deposit Veshje - Negotino

	SiO ₂	Al ₂ O ₃	Fe ₂ O ₃	CaO	Loss of ignition	Thickness (m)
D1-1	80.00	4.60	1.43	1.40	10.0	0.25
D1-2	66.64	9.43	3.77	2.36	11.0	0.20
D2	77.78	5.60	2.14	2.05	10.0	0.40
D3-1	67.54	15.54	6.86	2.60	6.5	0.30
D3-2	80.21	4.59	1.72	1.41	9.7	0.50
D4	86.05	1.78	0.86	2.00	8.0	0.90
D5	80.24	5.10	2.14	1.70	8.4	0.40
D8-1	79.30	5.60	2.08	1.66	9.3	0.20
D8-2	65.70	13.00	4.29	2.70	8.0	0.30
D9	62.07	12.50	3.72	5.00	7.0	0.45
D10-1	85.70	3.31	1.43	1.68	5.8	0.85
D10-2	85.20	3.06	1.14	1.46	6.8	0.40
D15	76.00	6.90	3.00	3.30	5.2	0.50
D16	85.00	3.31	2.20	3.36	3.0	0.60
D19	87.00	2.24	3.07	3.70	1.5	0.50
Undermine	90.00	-	1.60	0.90	-	0.50
Total	78.40	6.40	2.59	2.20	7.50	0.58

Generally it could be claimed that the area with the best quality of Diatomaceous earth in the deposit Veshje running east-west on the section between the drills D4 and D10, i.e. in the central part of the investigated area. The quality gradually decreases to peripheral parts of the deposit.

Under this structure, the diatomaceous earth from the deposit Veshje a quality mineral resource that can be used for filtration, thermal insulation and many other uses in industry and construction.

Based on geological researches and chemical investigations the average content of useful substances (SiO_2) in Diatomaceous earth at the deposit Veshje is 78.40%, with an average thickness of the productive layer 0.60 m.

In future detailed geological surveys in this region that will define the continuity of the productive layer of the wider area, which will increase ore reserves, should continue. It will also answer the question in a former basin of sediment, where the space in which the productive layer thickness appears with its most thickness.

REFERENCES

- [1] Arik, H.: Synthesis of Si_3N_4 by the carbo-thermal reduction and nitridation of diatomite. *J. Eur. Ceramic Soc.*, 23: 2005-2014, 2003.
- [2] Boev B.: Petrology, geochemical and volcanic features of volcanic rocks of the Kozuf Mountain. PhD Thesis, Faculty of Mining and Geology, Štip, 195, 1988.
- [3] Bundeovski N.: Elaborat za istraznrite raboti na dijatomejska zemja na objektot Vesje –Negotinsko so presmetka na rudnite rezervi vo 1967 god. Geoloski zavod, Skopje, 1987.
- [4] Elden H., Morsy M., Bakr M.: Diatomite: Its Characterization, Modifications and Applications. *Asian Journal of Materials Science* 2 (3): 121-136, 2010.
- [5] Engh K.R., in: Howe-Grant M. (Ed.), Kirk–Othmer Encyclopedia of Chemical Technology. vol. 8, fourth ed., Wiley, New York, p. 108, 1993.
- [6] Garevski R.: Neuer Fund von Mastodon in Diatomeen - schechten bei Barovo, Mazedonien. *Fragm. balcan*, T. No 7, Skopje, 1960.
- [7] Hristov S., Karajovanović M., Stračkov M.: Tolkuvač za Osnovna Geološka karta na SFRJ, 1:100 000, List Kavadarci, Geološki Zavod, Skopje, 1973.
- [8] Izmajlov N.: Tikveški ugljenosni basen (sa narocitim osvrtom jezerskog stanja Povardarja). *Trudovi na Geoloski zavod NRM*, sv. 6, Skopje, 1958.
- [9] Jenko K.: Izvestaj (dijatomejska zemja). *Stručen fond*, Skopje, 1946.
- [10] Maksimović B., Sikošek B., Marković O., Veselinović M.: Geološki sastav i tektonska struktura jednog dela Ovčeg Polja i Tikveša sa paleontološkom dokumentacijom. *Geološki Zavod na NRM, Skopje, Trudovi*, sv. 4, pp. 1-177, 1954.
- [11] Mendioroz, S., et al.: Thermogravimetric study of diatomites. *J. Thermal Anal. Calorimetry*, 35: 2097-2104, 1989.
- [12] Paschen S.: Diatomaceous earth extraction, processing and application. *Erzmetall*, 39: 158-161, 1986.
- [13] Polić A., Jenko K., Jojić D.: Izveštaj za geološkoto kartiranje na poširokata oblast Demir Kapija. *Trudovi na Geološki Zavod na NRM, Skopje*, , sv. 3, 1952.
- [14] Stojanov R.: Izveštaj za dijatomejskata zemja kaj s. Vešje – Negotinsko. *Stručen fond*, Skopje, 1955.
- [15] Tsai W.T., Hsien K.J., Lai C.W.: Chemical Activation of Spent Diatomaceous Earth by Alkaline Etching in the Preparation of Mesoporous Adsorbents. *Ind. Eng. Chem. Res.* 43, 7513-7520, 2004.