

¹ University "Goce Delcev" Faculty of Medical Sciences,
 Study of General Stomatology,
 Dept. of Oral Surgery- Shtip, R. Macedonia
² PHO "Dent Estet" - Shtip, R. Macedonia
³ "Carol Davila" University of Medicine and Pharmacy,
 Faculty of Dental Medicine, Bucharest, Romania.



Стоматолошка Ординација
ДЕНТ ЕСТЕТ

Resolving of deficit alveolar ridges by induced bone regeneration- case report

Papakoca Kiro¹*, Dimova Cena¹, Papakoca Gordana², Nevenka Velickova¹, Papakoca Velko³

INTRODUCTION - and AIM - The aim was to show illustrative, indication of alveolar augmentation before insertion of endosseous dental implants. In our case report we have shown the indication for ridge augmentation prior to the placement of endosseous dental implant. The local process of bone regeneration was thus stimulated and the chances of a good clinical output were increased.

CASE REPORT - Female patient (27 years old) visited our clinic. Diagnosis was periodontitis of 46 and indication to remove the tooth, and reconstruction of alveolar ridge in order to place the implant in a sufficient volume bone. Implant placement occurred 8 months after extraction of the tooth. After 4 months implant placement prosthetic restoration was made.

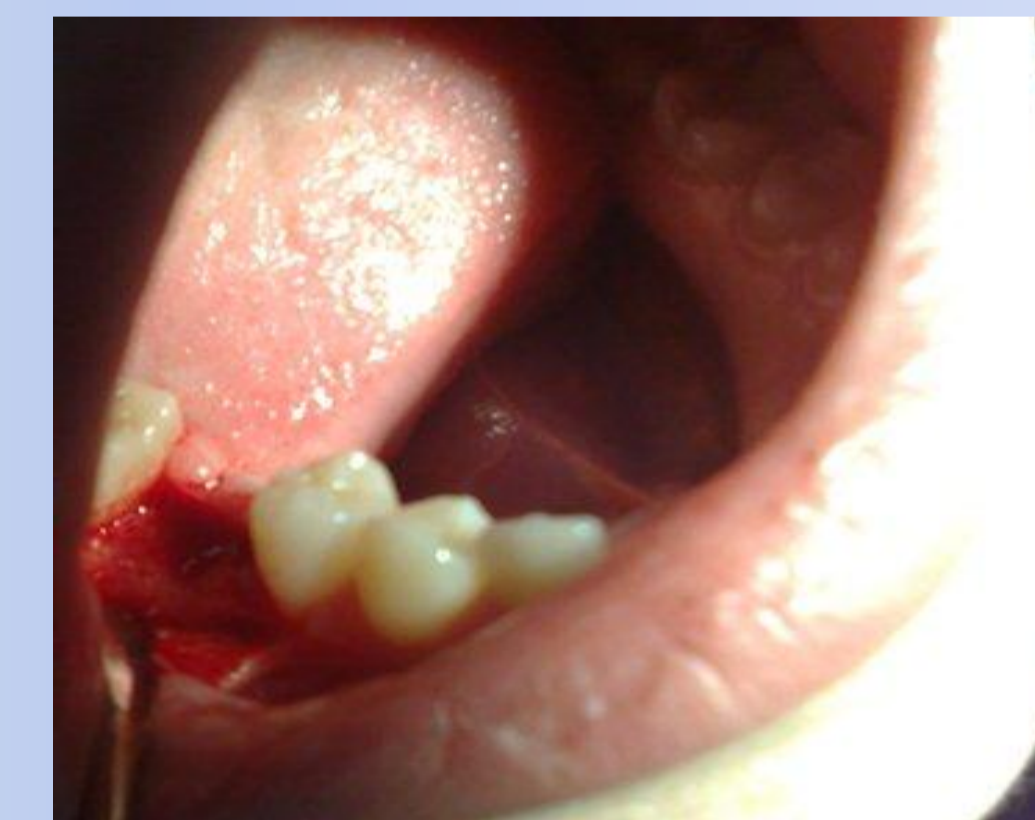
RESULTS - Advantages of an augmented alveolar ridge with sufficient bone volume to adjust for uncompromised and esthetic implant placement, renders these procedures more than effective for majority of patients.



X - ray before the extraction

Bone bovine substituent

After bone addition (alveolar preservation)



Control x-ray before the implant placement

Clinical photos before the implant placement



Control x-ray after implant placement

After 4 months

Control x-ray with supra structure

CONCLUSION - Surgical reconstruction of these tissues and the procedure of ridge augmentation and subsequent placement of dental implant are necessary.