

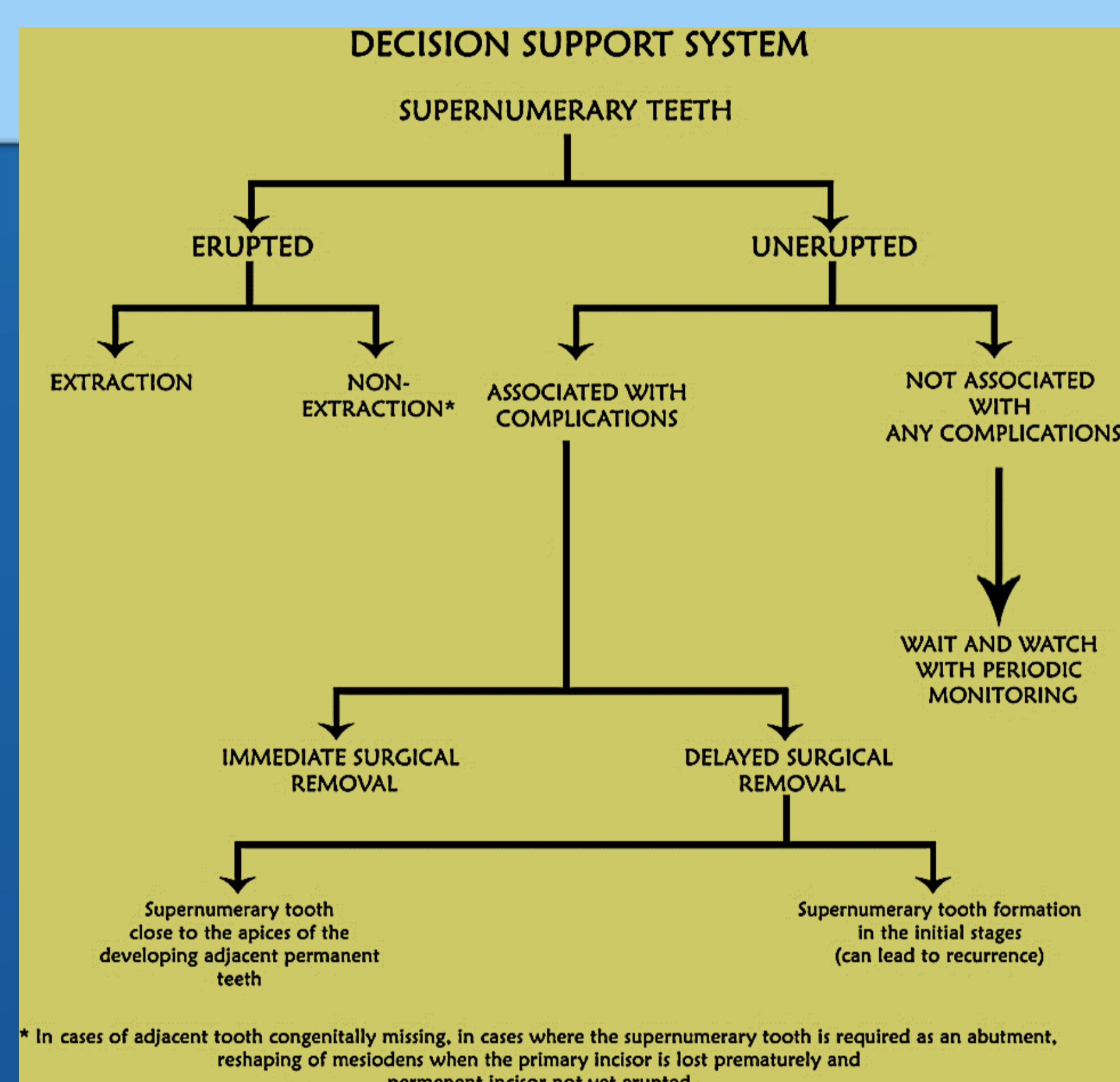


Contemporary Classification of Supernumerary Teeth

Cvetanoski Igor, Petrovski Marko, Naskova Sanja, Dimova Cena

INTRODUCTION: Hyperdontia or supernumerary teeth are teeth that are additional to the normal series and can be found in almost any region of the upper and lower dental arch. The etiology of supernumerary teeth is not completely understood. Various theories exist for the different types of supernumerary. Supernumerary teeth have been classified mainly based on their morphology and location. Also, there is a classification of supernumerary teeth associated with syndrome or non-syndrome. Supernumerary teeth are usually associated with cleft lip and palate or other syndromes such as Gardner's syndrome, cleidocranial dysplasia and trichorhino phalangeic syndrome. However, it can be present in patients without any systemic pathology

AIM: The aim of the study is to emphasize the contemporary classification of supernumerary teeth. In order to accomplish the aim of the study, research of scientific base (PubMed, Medline) was made.



RESULTS: As a result was found that different author classified very dissimilar. First group of authors classified supernumeraries as single or multiple. Single supernumeraries were further classified based on morphology as conical, tuberculate, supplemental and, composite odontoma which may be compound or complex. Multiple supernumeraries were classified as those associated with syndromes and those which are not associated with syndromes. According to morphology, supernumerary teeth may be further classified as accessory and supplemental. Accessory teeth do not resemble the normal form and have a morphology that deviates from the normal appearance of the teeth. Supplemental teeth are extra teeth but have the shape and size of normal teeth. Second group of authors classified supernumeraries into two types according to their shape: supplemental and rudimentary. Supplemental or eumorphic refers to supernumerary teeth of normal shape and size, and may also be termed incisiform. Rudimentary or dysmorphic defines teeth of abnormal shape and smaller size, including conical, tuberculate, and molariform types.

CONCLUSION: As a conclusion, independent which classification will be used, the presence of supernumerary teeth can cause alterations in neighbouring teeth, commonly retained teeth or delayed eruption, as well as dental malposition, diastema, tooth rotation and inclination, ectopic eruption, occlusal problems, etc.