

ABSTRACT BOOK



4th Balkan Congress of Nuclear Medicine

Ohrid 2015



ORGANIZER

MACEDONIAN ASSOCIATION OF NUCLEAR MEDICINE

WITH CONTRIBUTION

European Association of Nuclear Medicine & European School of Nuclear Medicine
Institute of Pathophysiology and Nuclear Medicine Academic Isak S Tadzer,
Medical Faculty, University Ss Cyril and Methodius, Skopje
Ministry of Health, of Republic of Macedonia
Institut Francais, Skopje
World Association for Radionuclide Molecular Therapy

ACCREDITATION

The Congress is accredited by Macedonian Medical Society and Doctors Chamber of Macedonia with 20 points for active participants and 10 points for passive participants.

CONGRESS BOARD

A. Ugrinska ♦ D. Miladinova ♦ L. Muratovska ♦ V. Majstorov

ORGANIZING COMMITTEE

S. Stojanovski ♦ T. Tripunoski ♦ B. Crcareva ♦ T. Makazlieva ♦ N. Ristevska
M. Zdravkovska ♦ M. Kocovska Zdravkovska ♦ B. Andonovski
E. Janevik Ivanovska ♦ Z. Petrovski ♦ S. Mihajlova ♦ K. Trajkovska
M. Angeleska ♦ A. Bogdanovska

SCIENTIFIC COMMITTEE

C. Hoefnagel ♦ M. Luster ♦ Z. Ozcan ♦ O. Ugur ♦ A. Rimbu ♦ R. Mitttelu
D. Piciu ♦ J. Buscombe ♦ M. Stokkel ♦ S. Frangos ♦ R. Bolton
D. Sobic Saranovic ♦ V. Artiko ♦ M. Vlajkovic ♦ M. Matovic ♦ A. Fotopoulos
J. Koutsikos ♦ V. Prassopoulos ♦ D. Miladinova ♦ V. Majstorov ♦ A. Ugrinska
J. Gjorgiev ♦ D. PopGjorceva ♦ O. Vaskova ♦ T. Tripunoski
E. Janevik Ivanovska ♦ I. Mihaljevic ♦ E. Kucukalic Selimovic ♦ A. Begic
M. Garcheva ♦ S. Sergieva ♦ J. N. Talbot ♦ V. Obradovic

LOCAL EXECUTIVE ORGANIZER

Tourist Agency Vis Poj, Ohrid ♦ congress@vispoj.com.mk ♦ tel. 389 46255600

INVITED LECTORS

Clinical applications of 18F-fluorocholine: current status and potential future applications

JN TALBOT

**Médecine Nucléaire, Hôpital Tenon,
AP-HP & Université Pierre et Marie Curie, Paris**

page 1

PET/MR planning and preparing for its arrival-a nuclear medicine perspective

So you want to buy a PET-MR

Prof John Buscombe

Cambridge University Hospitals, Cambridge

page 2

Contribution of PET scan in treatment

Vassilios Prassopoulos

page 3

KIDNEY ARTERIES ASSESSMENT VIA CT ANGIOGRAPHY

A.GEORGIEV, V.SIRAKOV, M. STOEVA, K. VELKOVA

Medical University - Plovdiv

Medical Imaging Department

page 4

Incorporating PET/CT Imaging in Radiation Oncology Treatment Delivery

Roberto Delgado-Bolton¹ and Adriana K. Calapaquí-Terán²

¹Logroño, La Rioja

²Madrid

page 5

PET in Lung Cancer

Roberto Delgado-Bolton, Logroño

page 8

Recurrent Thyroid Cancer; what to do?

M.P.M. Stokkel, NKI-AVL, Amsterdam

page 10

The role of Nuclear Medicine in Breast Cancer imaging: PET/CT or PET/MRI

M.P.M. Stokkel, NKI-AVL, Amsterdam

page 11

THE SIGNIFICANCE OF AUTOLOGOUS INDIUM-111 OXINATE LABELLED PLATELETS IN CHRONIC IMMUNE THROMBOCYTOPENIC PURPURA OF ADULTS AND CHILDREN

Mila Todorović-Tirnančić

page 12

MIBG in Diagnosis and Therapy of Neuroendocrine Tumors –looking back and forward

Cornelis A. Hoefnagel, Amsterdam

page 13

Nuclear medicine imaging in bone, soft tissue sarcomas (BSTS)and PET/CT impactin their clinical menagement.

E. Piperkova

National Oncology University Hospital Center-SHATO, Clinic of Nuclear Medicine, Sofia

page 15

Nuclear Medicine techniques in the diagnosis of brain death

R Mititelu

Dept of Nuclear Medicine

Central University Emergency Military Hospital, Bucharest

page 16

INTRAARTERIAL YTTRIUM-90 MICROSPHERE THERAPY FOR PRIMARY and METASTATIC LIVER TUMORS

BOZKURT MF, M.D., F.E.B.N.M.

page 18

Myocardial perfusion SPECT imaging in abnormal ventricular conduction

Rimbu A^{1,2}

1. Centre de Médecine Nucléaire, Institute Andrée Dutreix, Centre de Cancérologie et Radiothérapie Nord Littoral, Dunkerque
2. Department of Nuclear Medicine, « Colentina » Clinical University Hospital, Bucharest

page 19

Pain Palliation and Treatment of Refractory Bone Metastases(Prostate and Breast Cancer) with Re-188 HEDP

H.J.Biersack,Bonn

F.F.Knapp,Oak Ridge

page 20

ON-LINE TELEMONITORING OF PATIENTS TREATED WITH HIGH DOSES OF RADIONUCLIDE THERAPY. OUR COMPREHENSIVE TELEMEDICINE SYSTEM AS USEFUL TOOL IN CLINICAL PRACTICE

Matović M¹, Jeremić M¹, Urošević V², Ravlić M³, Vlajković M⁴

¹Department of Nuclear Medicine, Clinical Center Kragujevac and Faculty of Medical Sciences, University of Kragujevac

²Polytechnic School in Cacak, University of Kragujevac

³Prizma Company, Kragujevac, ⁴Department of Nuclear Medicine, Clinical Center Nis and Medical Faculty University of Nis

page 21

ROLE OF SPECT-CT IN DIAGNOSIS AND DIFFERENTIATION DIAGNOSIS OF BONE METASTASES

S.Sergieva

**Department of Nuclear Medicine, Sofia Cancer Center
Sofia**

page 22

Read the small letters of the Guidelines for ablation therapy and apply them to the patients. Size does not always matters.

SavvasFrangos MD, FEBNM, Nuclear Medicine Specialist

page 24

IMAGING IN CHILDREN WITH URINARY TRACT INFECTION URINARY TRACT INFECTION

Ajdinovic B

Military Academy, Belgrade

page 25

Clinical Impact of ventilation/perfusion single-photon emission computed tomography in detection of pulmonary embolism and follow up

Amela Begic, Clinic for Nuclear Medicine Clinical Centre, University Hospital Sarajevo, Sarajevo

page 27

PREDICTION OF SENTINEL LYMPH NODE STATUS BY PATIENT`S AND PRIMARY TUMOR CHARACTERISTICS IN CUTANEOUS MELANOMA - A SINGLE CENTER STUDY

**Jaukovic L¹, Rajovic M², KandolfSekulovic L³, Radulovic M¹,
Zlotarevski L⁴, Ajdinovic B¹, Novakovic M²**

¹Institute of Nuclear Medicine, ²Clinic for Plastic and Reconstructive Surgery, ³Clinic for Dermatology, ⁴Center of Pathology and Forensic Medicine

MilitaryMedicalAcademy, Belgrade

page 28

ARTEFACTS AND PITFALLS IN MYOCARDIAL PERFUSION IMAGING

Qaisar H. Siraj

page 29

**Quality Assurance and Quality Control of Nuclear Medicine Equipment –
SPECT/CT Systems**

Dimcheva M, Sergieva S, Jovanovska A

Department of Nuclear Medicine, Sofia Cancer Center, Sofia

page 30

CIRCULATING TUMOR CELLS A NEW PROGNOSTIC FACTOR IN MINIMALLY INVASIVE FOLLICULAR THYROID CARCINOMA

Doina Piciu

page 32

Parathyroid Imaging and Invasive Techniques

Seyfettin Ilgan, MD

Parathyroid Imaging

page 33

Gamma Probe Guided Parathyroidectomy

Prof. Dr. Ömer Uğur

Hacettepe University

Ankara

ougur@hacettepe.edu.tr

page 36

EVALUATION OF BONE TUMOURS WITH 99mTc-MDP/MIBI SCINTIGRAPHY

Miladinova D. MD PhD, Stefanova M. MD MSc

Institute of Pathophysiology and Nuclear Medicine Acad.Isak S.Tadzer, Faculty of medicine, University SsCyril and Methodius, Skopje

page 38

Prognostic importance of SPECT MPI

Venjamin Majstorov

Institute of Pathophysiology and Nuclear Medicine, Medical Faculty, University Ss' Cyril and Methodius, Skopje

page 39

Thyroid ultrasound-basic considerations, US features of benign thyroid diseases and US evaluation of thyroid nodules and neck lymph nodes

Venjamin Majstorov

page 40

LUTETIUM-177 LABELED RITUXIMAB : OPENED GATEWAY TO BETTER RADIOIMMUNOTHERAPY

Smilkov Katarina¹, Gorgieva Ackova Darinka¹, Janevik ivanovska Emilija¹, Chinol Marco², Carolo Angela², Gjorgoski Icko³

¹Faculty of Medical Sciences, "GoceDelcev" University, Stip

²European Institute of Oncology, Milan

³Faculty of Natural Sciences and Mathematics, University "Ss. Cyril and Methodius" Skopje

page 41

PET RADIOPHARMACEUTICALS IN ONCOLOGY - NEW CHALLENGES IN THE NEW FACILITY

Emilija Janevik-Ivanovska

Faculty of Medical Sciences, Goce Delcev University Stip

page 42

RADIONUCLIDE ANTIBODY-CONJUGATES: DEVELOPMENTS AND APPLICATIONS TO OBTAIN A TARGETED CANCER THERAPY

Gjorgieva Ackova Darinka¹, Smilkov Katarina¹, Petre Makreski², Trajče Stafilov², Duatti Adriano³, Janevik-Ivanovska Emilija¹

¹Department of Pharmacy, Faculty of Medical Sciences, University Goce Delčev – Štip

²Department of Chemistry, Faculty of Natural Sciences and Mathematics, University “Ss. Cyril and Methodius” – Skopje

³Department of Chemical and Pharmaceutical Sciences, University of Ferrara, Ferrara

page 44

Imaging of the cardiac autonomous nervous system

Riemer H..A. Slart, MD, PhD

Nuclear Medicine Physician, staff member of the department of Nuclear Medicine and Molecular Imaging, University Medical Center Groningen

page 45

Management of juvenile differentiated thyroid carcinoma: 37-years experience in Serbia

Jasna Mihailovic

**Department of nuclear medicine,
Oncology Institute of Vojvodina, Sremska Kamenica**

page 46

How a technologist need to be prepared for a congress

C. Pestean, Cluj Napoka

page 48

SPECT/CT Imaging: instrumentation Development

S. Rep, L. Ležaić

**Department for Nuclear Medicine,
University Medical Centre Ljubljana**

page 50

Parathyroid Imaging

S. Rep, L. Ležaić

**Department for Nuclear Medicine,
University Medical Centre Ljubljana,**

page 50

CLINICAL PROTOCOL OF SPECT-CT BONE SCAN

Jovanovska A, Dimcheva M, Sergieva S

Department of Nuclear Medicine, Sofia Cancer Center, Sofia

page 51

THYROID & EXTRATHYROID MALIGNANCIES

Ugrinska A

University "Ss Cyril and Methodius", Medical Faculty, Institute of Pathophysiology and Nuclear Medicine "A. Isak S Tadzer", Skopje

page 52

Management of low-risk thyroid cancer

John T. Koutsikos, MD, PhD

Nuclear Medicine physician, Nuclear Medicine Dept.

401 General Military Hospital, Athens

page 53

GASTROINTESTINAL APPLICATIONS IN PEDIATRIC NUCLEAR MEDICINE

Zehra Ozcan, MD, FEBNM,

Ege University School of Medicine

Department of Nuclear Medicine

35100 Bornova, Izmir

page 54

ORAL PRESENTATION

DIAGNOSTIC PERFORMANCE OF IAEA SOFTWARE PACKAGE FOR THE ANALYSIS OF RENAL DYNAMIC SCINTIGRAPHY: THE VALUES OF QUANTITATIVE PARAMETERS OF Tc-99m MAG3 RENOGRAPHY IN HEALTHY INDIVIDUALS

Beatović S¹, Jakšić E¹, Janković M², Antić V³, Blagić M³, Šobić-Šaranović D¹, Artiko V¹

- 1. University of Belgrade, Faculty of Medicine, Center for Nuclear Medicine, Clinical Center of Serbia**
- 2. University of Belgrade, Faculty of Electrical Engineering**
- 3. Center for Nuclear Medicine, Clinical Center of Serbia Belgrade**

page 58

ROLE OF RENAL OUTPUT EFFICIENCY AND NORMALIZED RESIDUAL ACTIVITY IN PREDICTING KIDNEY OUTFLOW OBSTRUCTION IN CHILDREN WITH ANTENATALLY DETECTED HYDRONEPHROSIS

Beatović S¹, Jakšić E¹, Janković M², Radulović M³, Šobić-Šaranović D¹, Artiko V¹.

- 1. University of Belgrade, Faculty of Medicine, Center for Nuclear Medicine, Clinical Center of Serbia**
- 2. University of Belgrade, Faculty of Electrical Engineering**
- 3. Military Medical Academy, Belgrade**

page 59

Localization of an insulinoma with ^{99m}Tc-HYNIC-exendin-4 in a patient with situs inversus: a case report

Luka Lezaic MD PhD¹, Petra Kolenc Peitl MPharm PhD¹, Katja Zaletel MD PhD¹, Iztok Stotl MD², Ales Tomazic MD PhD³, Anna Sowa-Staszczak MD⁴, Renata Mikolajczak⁵ and Alicja Hubalewska-Dydejczyk MD PhD⁴

¹Department for Nuclear Medicine, University Medical Centre Ljubljana

²Department of Endocrinology, Diabetes and Metabolic Diseases, University Medical Centre Ljubljana

³Department for Abdominal Surgery, University Medical Centre Ljubljana

⁴Nuclear Medicine Unit, Department of Endocrinology, Jagiellonian University Medical School, Cracow ⁵National Centre for Nuclear Research Radioisotope Centre POLATOM, Otwock

page 60

ONE DECADE OF GAMMAKEY SYSTEM – IMPORTANCE OF NON-STANDARD FEATURES IN CLINICAL NUCLEAR MEDICINE

Janković M¹, Koljević Marković A², Beatović S^{3,4}, Todorović-Tirnanović M^{3,4}, Odalović S³, Antić V³, Petrović N^{3,4}, Artiko V^{3,4}, Popović D¹

¹University of Belgrade - Faculty of Electrical Engineering, ²National Cancer Research Center, ³Center for Nuclear Medicine, Clinical Center of Serbia, ⁴University of Belgrade - Faculty of Medicine, Belgrade

page 62

QUANTIFICATION OF SMALL SIZE LESIONS IN DYNAMIC SCINTIGRAPHY APPLIED IN PARATHYROID LESIONS: AN ADDITIONAL PREDICTIVE VALUE FOR DIFFERENTIAL DIAGNOSIS VS. THYROID NODULAR DISEASE

Koljevic Markovic¹, M. Jankovic, G. Pupić, R. Džodić ¹National Cancer Research Center, Belgrade, ²Faculty of Electrical Engineering, University of Belgrade, Belgrade, ³Faculty of Medicine, University of Belgrade

page 63

FDG PET IN PRESURGICAL EVALUATION OF FOCAL EPILEPSY

L. Brajković¹, D. Sokić², N. Vojvodić², A. Ristić², S. Janković², D.Šobić-Šaranović,¹ V. Artiko¹

Center for Nuclear Medicine¹, Clinical Center of Serbia

Clinic for Neurology², Clinical Center of Serbia, Belgrade, Serbia

lelabrajko62@gmail.com

page 64

POSTER PRESENTATION

FIRST POLISH EXPERIENCES IN THE CYCLOTRON PRODUCTION OF ^{99m}Tc

Pawlak D, Wojdowska W, Parus J, Cieszykowska I, Janiak T, Jerzyk K, Mielcarski M, Barcikowski T, Garnuszek P, Mikołajczak R. National Centre for Nuclear Research, Radioisotope Centre POLATOM, Otwock

page 67

$^{99}\text{Mo} / ^{99m}\text{Tc}$ SHORTAGE: FROM PERSPECTIVE OF NUCLEAR MEDICINE PHYSICIAN

Ince S, Alagoz E, Emer O, San H, Okuyucu O, Ayan A, Karacalioglu O, Gunalp B, Arslan N. Gulhane Military Medical Academy and School of Medicine, Department of Nuclear Medicine, Etlik, Ankara

page 68

Evaluation of radiochemical purity and tumor uptake of ^{188}Re -HEDP

T.Tripunoski¹ and D.Mathe,² L.Balogh,² A.Polyak,² A. Ugrinska¹, Gy. A. Janoki,² S. Stojanovski¹, D. Miladinova¹, E. Janevik-Ivanovska³, O.Vaskova¹

¹Institute of Pathophysiology and Nuclear Medicine, Medical Faculty, Skopje

²Frederic Joliot-Curie National Institute of Radiobiology and Radiohygiene, Dept. of Applied Radioisotopes, Budapest

³Faculty of Medical Sciences, Goce Delcev University, Stip

page 70

Comparative characteristics of radionuclides $\text{Tcm}99\text{MIBI}$ and $\text{Tcm}99\text{TETROFOSMIN}$ in process of biodistribution

Mihajlova S, Risteski Lj, Mihajlova S, Sirvini Z, Sekulovska M
Department of nuclear medicine, Clinical hospital -Bitola

page 71

Effect of Low Dose CT Attenuation Correction in the Incidence of Ischemia During Myocardial Perfusion Scintigraphy

Pipikos T¹, Vlachou F¹, Nikaki A¹, Koletti L¹, Gogos K², Iakovidou A¹, Dalianis K², Prassopoulos V¹;

¹Nuclear Medicine Department Hygeia SA, Athens, Marousi, ²Medical Physics Department, Hygeia S.A., Athens, Marousi

page 72

The correlation between „gated” single - photon emission computed tomography methoxyisobutylisonitrile early imaging protocol and dobutamin stress echocardiography in patients with ischemic heart disease

Bojic L¹, Sobic – Saranovic D², Petrasinovic Z³, Djordjevic Dikic A³, Artiko V², Obradovic V²

¹Department of nuclear medicine, Clinical Centre of Montenegro, Podgorica, ²Center of nuclear medicine, Clinical Centre of Serbia, Belgrade ³Clinic for Cardiology, Clinical Center of Serbia, Belgrade

page 73

Screening for the presence of silent myocardial ischemia using the method of perfusion scintigraphy in diabetic patients

Hadžiahmetović M¹, Kučukalić- Selimović E¹, Cerić Š¹, Agić S¹, Čibo M²

1. Department of Nuclear medicine, Clinical center University of Sarajevo

2. Heart center, Clinical center University of Sarajevo

page 75

The importance of the Myocardial perfusion scan (MPI) in evaluation of patients after Percutaneous Coronary Intervention (PCI)

Abdullahu L; Miftari R; Gërqari I; Bajqinca A; Spahiu F; Bajrami I

SHSKUK, Clinic for nuclear medicine, Prishtinë

page 76

Left ventricular function in acromegaly assessed by radionuclide ventriculography

Zdravkovska M¹, Pop Gjorcheva D¹, Pemovska G², Majstorov V¹, Stojanoski S¹, Ristevska N¹, Kochovska Zdraveska M¹

Institute of Pathophysiology and Nuclear Medicine¹, Clinic of Endocrinology and metabolism disease², Medical Faculty, UKIM, Skopje

page 79

ROLE OF FDG-PET IN RENAL CANCER

Nikaki A¹, Kechagias D¹, Vlachou F¹, Filippi V¹, Pipikos T¹, Savvidou D¹, Razi E², Gogos K³, Merisoglou S¹, Andreou I¹, Efthymiadou R¹, Prassopoulos V¹;

¹PET/CT Department ,Hygeia S.A., Athens, Marousi, ²3rd Oncology Department, Hygeia S.A., Athens, Marousi, ³Medical Physics Department ,Hygeia S.A., Athens, Marousi

page 80

FDG-PET/CT IN SOLITARY PULMONARY NODULE (SPN) ASSESSMENT

Vlachou F¹, Filippi V¹, Nikaki A¹, Savvidou D¹, Kosmidis P², Iliadis K³, Pipikos T¹, Gogos K⁴, Dalianis K⁴, Andreou I¹, Efthymiadou R¹, Prassopoulos V¹

¹PET/CT Department ,Hygeia S.A., Athens, Marousi, ²2nd Internal Medicine - Oncology Clinic Hygeia SA, Athens, Marousi, ³Thoracic Surgery Clinic Hygeia SA, Athens, Marousi, ⁴Medical Physics Department ,

Hygeia S.A., Athens, Marousi

page 82

Sarcoidosis and 18F-FDG PET/CT imaging - don't miss malignancy

Grmek M^{*}, Koren Pucelj N^{**}, Tercelj M^{**}

University Medical Centre Ljubljana, ^{*}Dept. for Nuclear Medicine, ^{**}Clinical Dept. for Pulmonary Diseases and Allergy, Ljubljana

page 83

A CASE OF NEUROBLASTOMA IN A 7 YEAR OLD CHILD

A.TODOROV, L. CHERVENKOV, V.SIRAKOV, M. STOEVA, K. VELKOVA

Medical University - Plovdiv

Medical Imaging Department

page 84

INFLUENCE OF NATURAL RADIOACTIVITY OF LUTETIUM IN THE PET DEVICES WITH LSO SCINTILLATORS

Antic V.^{1,2}, Stankovic K.²

¹Center for Nuclear Medicine, University Clinical Centre of Serbia, Belgrade, Serbia, Pasterova 2, 11000 Belgrade

² School of Electrical Engineering, University of Belgrade, Bulevar kralja Aleksandra 73, 11120 Belgrade

page 85

QUANTITATIVE ASSESSMENT OF VASCULAR TRANSIT THROUGH KIDNEY: RUTLAND-PATLAK ANALYSIS OF INITIAL PART OF RENOGRAM

Beatović S¹, Jakšić E¹, Janković M², Antić V³, Šobić-Šaranović D¹, Artiko V¹.

1. University of Belgrade, Faculty of Medicine, Center for Nuclear Medicine, Clinical Center of Serbia
2. University of Belgrade, Faculty of Electrical Engineering
3. Center for Nuclear Medicine, Clinical Center of Serbia
Belgrade

page 86

ADVANCED QUANTITATIVE ANALYSIS OF DYNAMIC RENAL SCINTIGRAPHY: ROLE OF PHYSIOLOGIC PARAMETERS OF KIDNEY OUTPUT IN THE DIAGNOSIS OF UPPER URINARY TRACT OBSTRUCTION

Beatović S¹, Jakšić E¹, Janković M², Radulović M³, Šobić-Šaranović D¹, Artiko V¹

1. University of Belgrade, Faculty of Medicine, Center for Nuclear Medicine, Clinical Center of Serbia
2. University of Belgrade, Faculty of Electrical Engineering
3. Military Medical Academy, Belgrade

page 87

Whole body and finger effective dose for medical workers operating in a PET/CT department with statistical analysis

Dalianis K¹, Kollias G¹, Vlachou F², Filippi V², Andreou J², Efthymiadou R², Prassopoulos V²

¹Medical Physics Department, Hygeia S.A., Athens, Marousi, ²PET/CT Department, Hygeia S.A., Athens, Marousi

page 88

OCCUPATIONAL EXPOSURE IN PET/CT DIAGNOSTICS: WHOLE BODY AND EXTREMITY DOSES

Antic V.^{1,2}, Ciraj-Bjelac O.^{2,3}, Stankovic J.^{2,3}, Arandjic D.^{2,3}, Bozovic P.^{2,3}

¹Center for Nuclear Medicine, University Clinical Centre of Serbia, Belgrade, Serbia, Pasterova 2, 11000 Belgrade

²School of Electrical Engineering, University of Belgrade, Bulevar kralja Aleksandra 73, 11120 Belgrade

³Vinča Institute of Nuclear Sciences, University of Belgrade, Mike Petrovica Alasa 12-14, 11001 Belgrade

page 89

THE BENEFITS OF ISO/IEC 17025 ACCREDITATION OF RADIOPHARMACY LABORATORY

Apostolova Paulina, Sterjova Marija, Smilkov Katarina, Gorgieva Ackova Darinka, Delipetrevka Katarina, Janevik Ivanovska Emilija

Faculty of Medical Sciences, University Goce Delčev – Štip

page 90

ESTABLISHMENT OF PRODUCTION LABORATORY FOR FLUORODEOXYGLUCOSE 18F (18F-FDG)

Marija Atanasova, Maja Jancovska, Katerina Kolevska, Maja Velickovska, Filip Jolevski, Emilija Janevik-Ivanovska

Faculty of Medical Sciences, Unit for PET implementation, University Goce Delčev – Štip

page 91

QUALITY CONTROL OF PET RADIOPHARMACEUTICALS, AN IMPERATIVE FOR SUCCESSFUL CLINICAL OUTCOMES

Maja Velickovska, Filip Jolevski, Marija Atanasova, Maja Jancovska, Katerina Kolevska, Emilija Janevik-Ivanovska

Faculty of Medical Sciences,

Unit for PET implementation, University Goce Delčev

page 92

THE NEED OF RADIOPHARMACY IN NUCLEAR MEDICINE DEPARTMENTS: AFRICAN EXPERIENCE

Joel Munene Muchira^{1,3}, David Mwanza Wanjeh^{1,3}, Aschalew Alemu^{2,3}, Emilija Janevik-Ivanovska

¹Ministry of Health, Kenya

²Faculty of Medicine, Addis Ababa

³Faculty of Medical Sciences, Goce Delcev University, Shtip

page 93

Comparison between 18F-FDG-PET/CT and somatostatin receptor scintigraphy in a patient with a neuroendocrine tumor

Petrov T¹, Garcheva M¹, Elenkova A², Vasilev V², Ivanova R², Zacharieva S², Kostadinova I¹

¹Clinic of nuclear medicine, Medical University, Sofia; ²Clinical center of endocrinology, Medical University, Sofia

page 94

Correlation of Brain perfusion SPECT using ^{99m}Tc-HMPAO with neuropsychological tests in diagnosis of Dementia

Makazlieva T.¹, Vaskova O.¹, Krsteska R.², Stoeva M.², Zafirova-Ivanovska B.³, Mukaetova Ladinska E.⁴

¹Institute of Pathophysiology and Nuclear Medicine, Medical Faculty, Skopje

²Psychiatric Hospital, Psychogeriatric Center – Skopje

³Institute of Epidemiology and Biostatistics, Medical Faculty, Skopje

⁴Institute for Ageing and Health, Newcastle University

page 95

POSITRON EMISSION TOMOGRAPHY WITH 18F- FLUORODEOXYGLUCOSE IN THE DIFFERENTIAL DIAGNOSIS OF PARKINSONISM

L. Brajković¹, V. Kostić², M. Svetel², E. Stefanova², I. Petrović², M. Jecmenica-Lukić²,

D. Šobić-Šaranović¹, V. Artiko¹

Center for Nuclear Medicine¹, Clinical Center of Serbia,

Clinic for Neurology², Clinical Center of Serbia, Belgrade

lelabrajko62@gmail.com

page 96

ROLE OF FCH-PET/CT IN BRAIN LESIONS ASSESSMENT

Nikaki A¹, Savvidou D¹, Prassopoulos V¹, Filippi V¹, Tsougos I², Vlachou F¹, Andreou I¹, Pipikos T¹, Dalianis K³, Papoutsis V¹, Efthymiadou R¹, Georgoulas P⁴;

¹PET/CT Department ,Hygeia S.A., Athens, Marousi, ²Medical Physics Department ,University of Thessaly, Larissa, ³Medical Physics Department ,Hygeia S.A., Athens,

Marousi, ⁴Nuclear Medicine Department,

University of Thessaly, Larissa

page 97

PET AND MRI IN THE DIAGNOSTIC ALGORITHM OF PATIENTS WITH DRUG-RESISTENT EPILEPSY

Kostadinova I¹, Minkin K², Dimova P², Zlatareva D³, Hadjiiska V.¹

¹ Department of Nuclear Medicine, ² Department of Neurosurgery, ³ Department of

Radiology, Medical University, Sofia

page 98

QUANTITATIVE MEASUREMENTS OF THE THERAPEUTIC EFFECT IN PATIENTS WITH SOMATOSTATIN EXPRESSING TUMORS, USING 99mTc-TECTROTYDE

Kostadinova I., A. Demirev, Medical Faculty, Sofia

page 99

THE ROLE OF FDG PET/CT FOR RE-STAGING IN BREAST CANCER PATIENTS WITH ELEVATED SERUM TUMOR MARKER LEVELS

Yüksel M¹, Yanmaz MT²

Kemerburgaz University, School of Medicine, Nuclear Medicine¹, Medical Oncology²,
Istanbul

page 100

F-18 FDG PET/CT in evaluation of subcutaneous and muscle metastases from malignant melanoma: case report

Muratovska L, Crcareva B, Stojanovska L, Anastasov Gj, Bogojevska J

Clinical Hospital Acibadem Sistina, Skopje

page 102

Value of neutrophil lymphocyte ratio in patients with bone metastases of solid tumors

Caliskan B, Korkmaz AN

Abant Izzet Baysal University,

Department of Nuclear Medicine, Bolu

page 104

Evaluation of SPECT/low dose CT Imaging in the assesment of equivocal spine lesions in planar bone scintigraphy

Pipikos T¹, Vlachou F¹, Nikaki A¹, Dalianis K², Iakovidou A¹, Efthymiadou R³, V. Prassopoulos V¹;

¹Nuclear Medicine Department Hygeia SA, Athens, Marousi,²Medical Physics Department ,Hygeia S.A., Athens, Marousi ³CT- MRI Department Hygeia SA, Athens, Marousi

page 105

SPECT/Low Dose CT Perfusion Study in the Investigation of Suspected Pulmonary Embolism

Pipikos T, Vlachou F, Nikaki A, Iakovidou A, Dalianis K, Prassopoulos V;

Nuclear Medicine Department Hygeia SA,

Athens, Marousi

page 106

THE ROLE OF 99mTc-PERTECHNETATE SCAN IN DIAGNOSIS OF MECKEL'S DIVERTICULUM IN ADULT PATIENT: A CASE REPORT

Miladinova D¹. MD PhD, Jankulovski N². MD PhD, Isahi U³. MD, Jovanovic R⁴. MD PhD, Trajkovska M³. MD PhD, Antovic S². MD

¹Institute of Pathophysiology and Nuclear Medicine, ²University Clinic for Digestive Surgery, ³University Clinic for Gastroenterohepatology, ⁴Institute of Pathology, Faculty of Medicine, University SsCyril and Methodius, Skopje

page 107

SENTINEL LYMPH NODE IN COLORECTAL CANCER

Antovic S¹, Jankulovski N¹, Miladinova D², Spasevska L³, Stojanovski S², Andreevski V⁴

¹University Clinic for Digestive Surgery, ²Institute of Pathophysiology and Nuclear Medicine, ³Institute of Pathology, Faculty of Medicine, ⁴University Clinic for Gastroenterohepatology Faculty of medicine University SsCyril and Methodius, Skopje

page 108

Scintigraphic evaluation of skeletal infections and inflammation with radiolabeled monoclonal antibodies: case report

Crcareva B¹, Muratovska L¹, Vaskova O², Miladinova D², Samardziski M³

¹Clinical Hospital Acibadem-Sistina Skopje

²Institute of Pathophysiology and Nuclear Medicine, Medical Faculty Skopje

³Clinic for Orthopaedic Surgery, Medical Faculty Skopje

page 109

SENTINEL LYMPH NODE DETECTION IN MELANOMA MALIGNUM DORSI – CASE REPORT

Authors: Stojanoski Sinisa 1, Trenceev Viktor 2, Angjeleska Meri 1, Ristevska Nevena 1, Pop Gjorceva Daniela 1, Miladinova Daniela 1, Majstorov Venjamin 1, Ugrinska Ana 1, Vaskova Olivija1

1 Institute of Pathophysiology and Nuclear Medicine, Acad “Isak S. Tadzer”, 2 Clinic for plastic and reconstructive surgery, Medical Faculty, Skopje

page 110

Prediction of histopathological type of synovial sarcoma by MRI; is it possible?

Violeta Vasilevska Nikodinovska¹, Joan C Vilanova², Filip Vanhoenacker³, Iris Noebauer-Hohmann⁴,

¹University Surgical Clinic “St.Naum Ohridski” Skopje

²Clínica Girona, Girona

³University Hospital Antwerp, Edegem

⁴Clinic for Radiodiagnostic,

Algemeine Krankenhaus AKH, Viena

page 111

Clinical experience with TCm99MDP imaging in patients with malignant tumors- preliminary results

Veljanovska J, Mihajlovska S, Sekulovska M, Risteski Lj

Department of nuclear medicine ,Clinical hospital –Bitola

page 112

Daily Quality control for PET/CT

Bogojevska J, Muratovska L, Crcareva B, Stojanovska L, Anastasov G

1Clinical hospital Acibadem-Sistina Skopje

page 113

Detection of anti-thyroid peroxidase autoantibodies (antiTPO-Ab) in early diagnosis of autoimmune thyroid disease (AITD) by RIA assay

Mihajlova S, Sekulovska M, Risteski Lj, Veljanova K

Department of Nuclear Medicine, Clinical Hospital, Bitola

page 114

ANTI-TPO CRUCIAL MARKER IN DIFFERENTIAL DIAGNOSIS IN THYROID AUTOIMMUNITY

Petrova Nasuh S¹ Kosturski N²

P.H.I Dr Kosturski – Biochemistry and Diagnostic Laboratory,
Bitola

page 115

REMNANT ABLATION SUCCESS AMONG PATIENTS WITH DIFFERENTIATED THYROID CANCER

Laketić N, Kovačić K, Simić A

Special Hospital for Thyroid Gland and Metabolism Čigota,
Zlatibor

page 116

LONG TERM THYROID FUNCTION AFTER J– 131 TREATMENT OF TOXIC THYROID ADENOMA

Z.Petrovski, K.Trajkovska, J.Gjorgievski

Department of Nuclear Medicine, Clinical Hospital, Bitola

page 117

THYROIDITIS AND URTICARIA CAUSED BY HELICOBACTER PYLORI

Antigona Begolli Gerqari(1), Idriz Gerqar(2), Mybera Ferizi(1), Sadije Halim(1), Aferdita Daka(1), Syzana Hapciu(1), Mirije Begolli(3), Ilir Begolli(4)

1. Dermatology Clinic-University Clinical Center Prishtina

2. Department of Nuclear Medicine-University Clinical Center Prishtina

3. Pediatric Clinic-University Clinical Center Prishtina

4. Institute of Public Health –Prishtina

page 118

HYPERTHYROIDISM AND PSORIASIS VULGARIS

Sadije Halimi(1), Mybera Ferizi(1), Antigona Gerqari(1), Idriz Gerqari(2), Mirije Begolli(3), Ilir Begolli(4)

1. Dermatology Clinic-University Clinical Center Prishtina

2. Nuclear Medicine Department-University Clinical Center Prishtina

3. Pediatric Clinic-University Clinical Center Prishtina

4. Institute of Public Health-Prishtina

page 119

PAPILLARY THYROID CARCINOMA IN OVARIAN TERATOMA - case report

Pop Gjorcheva D¹, Vaskova O¹, Ristevska N¹, Stojanoski S¹, Stojcevski S²

Institute of Pathophysiology and Nuclear medicine “Academic Isak S. Tadzer”¹,
University Clinic of gynecology and obstetrics², Medical Faculty, University “Ss.Cyril
and Methodius”, Skopje

page 120

Minimal Invasive Thyroidectomy (MIT) in surgical treatment of thyroid disease

Smilevski D, Muratovska L, Karagjozov M,
Crcareva B, Jashar Dz, Kubelka K, Filipovski V
Clinical Hospital Acibadem Sistina, Skopje

page 121

Increased incidence of positive thyroid antibodies in women with repeated unsuccessful cycles of in vitro fertilization

Muratovska L 1, Miladinova D 2, Crcareva B 1, Cokrevska Zografska N 1, Lazarevski S 1
1 Clinical Hospital Acibadem Sistina, Skopje, R Macedonia
2 Institute of Pathophysiology and Nuclear Medicine,
Medical Faculty Skopje

page 122

Thyroid incidentaloma detected by F-18 FDG PET/CT: case report

Muratovska L, Crcareva B, Anaastasov Gj, Bogojevska J, Stojanovska L
Clinical Hospital Acibadem Sistina, Skopje

page 124

CHARACTERISTICS OF BREAST CANCER PATIENTS REFERRED FOR BONE SCAN

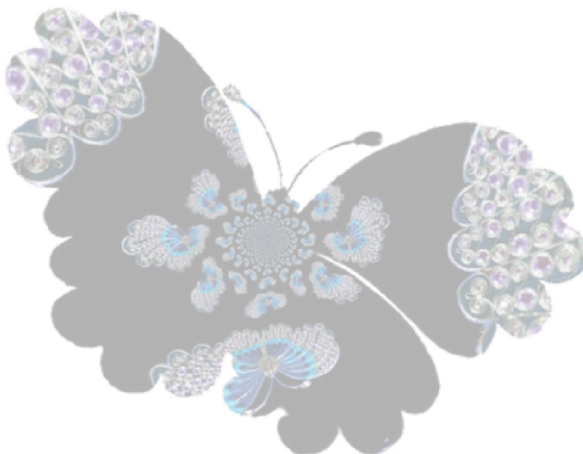
Ismaili I¹, Ugrinska A², Vasev N¹, Peseva M¹, Bozinoska N², Pajenga E, Tripunoski T², Miladinova D²

University Clinic of Radiotherapy and Oncology, Medical Faculty, UKIM, Skopje¹

Institute of Pathophysiology and Nuclear Medicine "A. Isak S Tadzer", Medical Faculty, UKIM, Skopje²

Department of Biology, Faculty of Natural Science,
University of Elbasan, Elbasan³

page 126



ESTABLISHMENT OF PRODUCTION LABORATORY FOR FLUORODEOXYGLUCOSE 18F (18F-FDG)

Marija Atanasova, Maja Jancovska, Katerina Kolevska, Maja Velickovska, Filip Jolevski, Emilija Janevik-Ivanovska
Faculty of Medical Sciences, Unit for PET implementation, University Goce Delčev – Štip

The radiopharmaceuticals such as ^{18}F -FDG are sterile radioactive products for human use and because of that production procedure is subject to special requirements. To minimize risks of radiation the production is fully automated in specially designed laboratories. On the other hand to minimize the microbiological and pyrogenic contamination during the production, all production steps should be carried out in clean areas entry to which should be through airlocks for personnel, equipment and materials. The production of ^{18}F -FDG should be carried out under negative pressure surrounded by a positive pressure zone ensuring that appropriate air quality requirements are met according EN ISO 14644-1

Due to this requirements our laboratory is specially designed to ensure fully automated and safe production of ^{18}F -FDG, taking care of radiation protection and sterility. For this purpose is equipped with double horizontal BBS1-SY hot cell shielded box designed to house automatic modules intended for routine production with two Synthera modules for ^{18}F -FDG synthesis, which are multi-purpose fully automated synthesizers. For dispensing of FDG we have hot cell for aseptic radiopharmaceutical dispensing Talia with Class A laminar flow equipped with CLIO - automatic dispensing system for radiopharmaceuticals, designed for dispense vials and syringes.

To ensure the safe manufacture of ^{18}F -FDG radiopharmaceuticals, validation and qualification will be applied in accordance with the principles of good manufacturing practices (GMP). All personnel for production will be trained in GMP, the safe handling of radioactive materials and radiation safety procedures.