



GOCE DELCEV University - Stip, R.Macedonia

PROF Dr. BLAZO BOEV, Faculty of Natural and Technical Sciences

PROF Dr. VIOLETA STEFANOVSKA, Faculty of Natural and Technical Science

MSc MAJA LAZAROVA, Faculty of Natural and Technical Sciences

PhD EMILIJIA KOSTADINOVSKA, Faculty of Agriculture

PROF Dr. SASA MITREV, Faculty of Agriculture

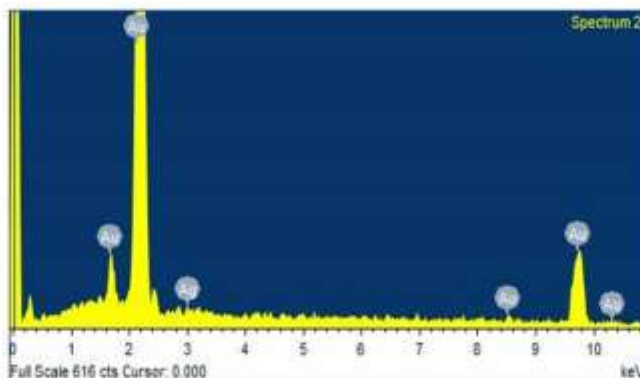
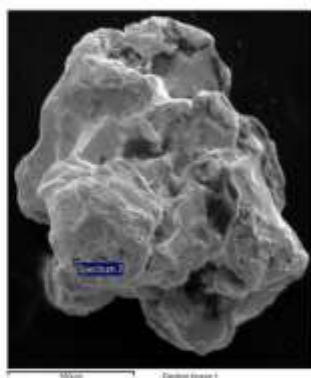
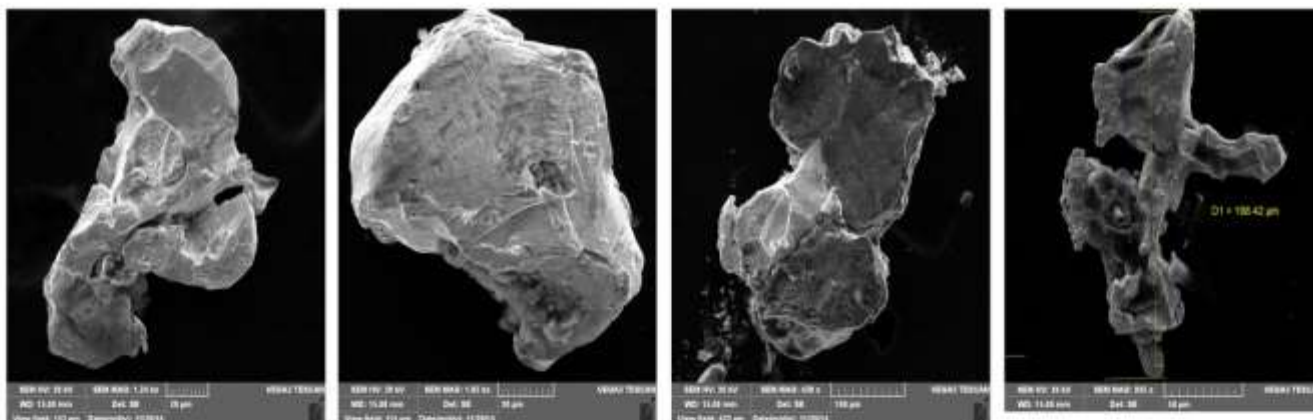
SEM ANALYSIS OF PLACER GOLD DEPOSITS FROM EASTERN MACEDONIA

In our laboratory we have SEM (scanning electron microscopy) from TESCAN, VEGA3LMU model, plus additional 10mm² SDD detector – x-act.

We analyze various types of samples, like minerals, metals, teeth, pharmacies samples, dust etc.

The analyses of micro samples of gold found in Eastern part of Macedonia, are showed below.

We analyze morphology, shape and the dimensions of gold particles and quantitative analysis.



The size of the gold aggregates found ranges from 30 to about 600 microns. Studies of the chemical composition showed that gold is characterized by high purity, which ranged from 750 to 996. Of all impurities the silver content is greatest from <1% to 26.91%. As for other ingredients Fe, Cu, Bi, Se, they are found in low content.

Corresponding author: blazo.boev@ugd.edu.mk

3rd Croatian Microscopy Congress, April 26-29, 2015, Zadar